

ROOM FINISH AND AREA SCHEDULE - ADMINISTRATION										
NUMBER	ROOM NAME	FINISH				ROOM DATA				
		FLOOR	BASE	WALL	CEILING	CEILING HEIGHT	Perimeter	Area	Volume	
01	CORRIDOR	C	K	R	V	86'-0"	222 SF	1,775 CF		
02	COURTYARD	-	-	-	-	59'-0"	201 SF	2,009 CF		
03	CORRIDOR	C	K	R	V	56'-0"	171 SF	1,367 CF		
04	LOBBY	D	H	P	V	74'-8"	208 SF	1,846 CF		
05	CORRIDOR	D	J	M	V	73'-3"	188 SF	1,503 CF		
06	OFFICE	-	-	-	-	45'-8"	130 SF	1,040 CF		
07	OFFICE	-	-	-	-	44'-4"	123 SF	981 CF		
08	OFFICE	-	-	-	-	45'-10"	131 SF	1,048 CF		
09	OFFICE	-	-	-	-	43'-0"	115 SF	920 CF		
10	CORRIDOR	-	-	-	-	109'-7"	300 SF	2,554 CF		
11	OFFICE	-	-	-	-	45'-10"	131 SF	1,048 CF		
12	OFFICE	-	-	-	-	43'-8"	119 SF	951 CF		
13	OFFICE	-	-	-	-	43'-4"	115 SF	924 CF		
14	OFFICE	-	-	-	-	43'-0"	115 SF	918 CF		
15	OFFICE	-	-	-	-	57'-8"	201 SF	1,609 CF		
16	CORRIDOR	-	-	-	-	82'-7"	217 SF	1,846 CF		
17	OFFICE	-	-	-	-	50'-0"	156 SF	1,249 CF		
18	OFFICE	-	-	-	-	67'-0"	254 SF	2,064 CF		
19	TLT	-	-	-	-	20'-4"	28 SF	204 CF		
20	OFFICE	-	-	-	-	44'-0"	120 SF	957 CF		
21	OFFICE	-	-	-	-	54'-0"	176 SF	1,408 CF		
22	OFFICE	-	-	-	-	43'-8"	118 SF	941 CF		
23	CONFERENCE	-	-	-	-	76'-0"	352 SF	2,816 CF		
24	OFFICE	-	-	-	-	43'-8"	118 SF	941 CF		
25	CORRIDOR	-	-	-	-	117'-11"	318 SF	2,706 CF		
26	OFFICE	-	-	-	-	43'-8"	118 SF	941 CF		
27	ENTRY	-	-	-	-	37'-3"	77 SF	655 CF		
28	OFFICE	-	-	-	-	43'-5"	116 SF	929 CF		
29	MECH.	-	-	-	-	46'-4"	134 SF	1,071 CF		
30	MEN	-	-	-	-	28'-7"	42 SF	338 CF		
31	WOMEN	-	-	-	-	28'-3"	41 SF	330 CF		
32	COATS	-	-	-	-	19'-9"	24 SF	194 CF		
33	BREAK ROOM	-	-	-	-	71'-11"	276 SF	2,207 CF		
34	OFFICE	-	-	-	-	52'-7"	172 SF	1,377 CF		
35	OFFICE	-	-	-	-	42'-5"	110 SF	877 CF		
36	RECEPTION	A	L	M	-	77'-0"	278 SF	2,225 CF		
37	OFFICE	-	-	-	-	42'-9"	112 SF	893 CF		
38	CORRIDOR	-	-	-	-	172'-4"	481 SF	4,089 CF		
39	OFFICE	-	-	-	-	42'-5"	110 SF	877 CF		
40	WAITING	-	Z	M	-	54'-4"	181 SF	1,447 CF		
41	OFFICE	-	-	-	-	42'-9"	112 SF	893 CF		
42	R.R.	C	K	M	W	37'-8"	84 SF	674 CF		
43	OFFICE	-	-	-	-	42'-5"	110 SF	877 CF		
44	STORAGE	B	L	M	W	41'-0"	104 SF	827 CF		
45	OFFICE	-	-	-	-	52'-9"	173 SF	1,385 CF		

ROOM FINISH AND AREA SCHEDULE - DETENTION										
NUMBER	ROOM NAME	FINISH				ROOM DATA				
		FLOOR	BASE	WALL	CEILING	CEILING HEIGHT	Perimeter	Area	Volume	
101	WAITING	B	L	N	V	70'-1"	247 SF	1,975 CF		
101a	MEN	B	L	N	V	25'-0"	36 SF	288 CF		
101b	WOMEN	B	L	N	V	25'-0"	40 SF	320 CF		
102	OFFICE	B	L	N	V	52'-0"	166 SF	1,328 CF		
103	BEDROOM	E	H	P	V	38'-7"	90 SF	722 CF		
104	BEDROOM	E	H	P	V	38'-7"	90 SF	722 CF		
105	BEDROOM	G	H	U	X	38'-7"	90 SF	722 CF		
106	MEDICAL	B	L	N	V	53'-3"	173 SF	1,384 CF		
107	STO.	E	H	N	V	37'-3"	80 SF	637 CF		
108	ELEC.	E	H	N	V	33'-2"	60 SF	478 CF		
109	BEDROOM	E	H	P	V	38'-11"	92 SF	916 CF		
110	BEDROOM	E	H	P	V	38'-11"	92 SF	916 CF		
111	BEDROOM	E	H	P	V	38'-11"	92 SF	916 CF		
112	BEDROOM	E	H	P	V	38'-11"	92 SF	916 CF		
113	OFFICE	B	L	N	V	40'-0"	93 SF	789 CF		
114	CLO.	B	L	N	V	16'-8"	16 SF	139 CF		
114	MECH.	-	H	N	V	34'-0"	72 SF	614 CF		
117	SHOWER	C	K	N	V	44'-0"	80 SF	676 CF		
118	DAY ROOM	B	L	N	V	104'-0"	388 SF	3,294 CF		
119	BEDROOM	E	H	P	V	38'-11"	92 SF	916 CF		
120	BEDROOM	E	H	P	V	38'-11"	92 SF	916 CF		
121	CLASSROOM	B	L	N	V	77'-2"	356 SF	2,847 CF		
122	CORRIDOR	B	L	N	V	41'-4"	82 SF	657 CF		
123	CORRIDOR	B	L	N	V	61'-4"	136 SF	1,087 CF		
124	CORRIDOR	B	L	N	V	85'-5"	249 SF	1,993 CF		
125	CLOTHING	B	L	N	V	30'-7"	58 SF	460 CF		
126	SEARCH	B	L	N	V	41'-2"	73 SF	586 CF		
127	LIBRARY	B	L	N	V	57'-4"	203 SF	1,621 CF		
128	STO.	B	L	N	V	23'-11"	35 SF	282 CF		
129	GIRLS	B	L	N	V	22'-7"	32 SF	254 CF		
130	SHOWER	C	K	Q	V	22'-6"	32 SF	252 CF		
131	MECH.	-	H	N	V	75'-4"	294 SF	2,789 CF		
132	CLASSROOM	B	L	N	V	75'-4"	323 SF	2,580 CF		
133	STO.	E	H	N	V	33'-3"	66 SF	531 CF		

ROOM FINISH AND AREA SCHEDULE - DETENTION										
NUMBER	ROOM NAME	FINISH				ROOM DATA				
		FLOOR	BASE	WALL	CEILING	CEILING HEIGHT	Perimeter	Area	Volume	
134	ELEC.	E	H	N	V	33'-2"	66 SF	527 CF		
135	BEDROOM	E	H	P	V	37'-3"	86 SF	690 CF		
136	BEDROOM	E	H	P	V	37'-3"	86 SF	690 CF		
137	BEDROOM	E	H	P	V	37'-3"	86 SF	690 CF		
138	BEDROOM	E	H	P	V	37'-3"	86 SF	690 CF		
139	BEDROOM	E	H	P	V	37'-3"	86 SF	690 CF		
140	BEDROOM	E	H	P	V	37'-3"	86 SF	690 CF		
141	BEDROOM	E	H	P	V	37'-3"	86 SF	690 CF		
142	BEDROOM	E	H	P	V	37'-3"	86 SF	690 CF		
143	CORRIDOR	B	L	N	V	140'-0"	347 SF	2,777 CF		
144	BEDROOM	E	H	P	V	37'-3"	86 SF	690 CF		
145	BEDROOM	E	H	P	V	37'-2"	86 SF	687 CF		
146	DAYROOM	A	L	N	V	74'-9"	349 SF	2,792 CF		
147	GIRLS	C	K	Q	V	42'-0"	76 SF	604 CF		
148	GIRLS	D	H	S	V	41'-8"	76 SF	604 CF		
149	BEDROOM	D	H	R	V	38'-0"	90 SF	720 CF		
150	BEDROOM	D	H	R	V	38'-0"	90 SF	720 CF		
151	BEDROOM	D	H	R	V	38'-0"	90 SF	720 CF		
152	BEDROOM	D	H	R	V	38'-0"	90 SF	720 CF		
153	MECH. EQUIP.	-	H	N	V	53'-4"	143 SF	1,143 CF		
154	PANTRY	D	J	N	V	17'-8"	18 SF	140 CF		
155	KITCH.	D	L	T	V	37'-8"	87 SF	693 CF		
156	BATH/SEARCH	D	J	N	V	56'-0"	110 SF	877 CF		
157	WAITING	D	J	N	V	41'-4"	101 SF	810 CF		
158	CONTROL	D	J	N	V	48'-8"	129 SF	1,034 CF		
159	JAN	E	H	N	V	18'-4"	21 SF	167 CF		
160	STO.	E	H	N	V	15'-0"	14 SF	111 CF		
161	DAY ROOM	D	H	R	V	158'-0"	1,275 SF	10,197 CF		
162	ISOLATION	D	H	R	V	40'-11"	104 SF	831 CF		
163	ISOLATION	D	H	R	V	40'-11"	104 SF	831 CF		
164	BOYS	D	H	S	V	45'-8"	88 SF	702 CF		
165	BOYS	C	K	Q	V	39'-4"	63 SF	505 CF		
167	CONTROL	A	L	N	V	67'-3"	256 SF	2,048 CF		
168	CORRIDOR	A	L	N	V	99'-4"	164 SF	1,314 CF		

### FINISH KEY

**FLOOR**

- A NEW CARPET TILE
- B NEW VINYL COMPOSITION TILE
- C NEW CERAMIC TILE
- D EXISTING TERRAZZO TO REMAIN
- E NEW SEALER ON EXISTING CONCRETE
- F REMOVED FROM PROJECT
- G NEW PC SAFE CELL 4730 PADDING SYSTEM
- EXISTING TO REMAIN

**BASE**

- H NO BASE - WALL FINISH EXTENDS TO FLOOR
- J EXISTING 4" RUBBER COVE BASE TO REMAIN
- K NEW 4" CERAMIC TILE BASE
- L NEW VINYL BASE TO MATCH EXISTING
- EXISTING TO REMAIN
- Z NEW 4" RUBBER COVE BASE ON WEST WALL ONLY

**WALLS**

- M NEW PAINT - TYPE 1 - BY OWNER
- N NEW PAINT - TYPE 2 - BY OWNER
- P NEW PAINT - TYPE 3 - BY OWNER
- Q NEW CERAMIC TILE
- R EXISTING GLAZED CMU TO REMAIN
- S NEW GROUT IN EXISTING GLAZED CMU
- T FULL-HEIGHT FIBERGLASS REINFORCED PANELS (FRP) OVER
- U NEW PC SAFE CELL 4730 PADDING SYSTEM
- EXISTING TO REMAIN

**CEILING**

- V PAINT EXISTING CEILING - BY OWNER
- W NEW 2x2 SUSPENDED CEILING GRID AND ACOUSTICAL TILES
- X NEW PC SAFE CELL 4730 PADDING SYSTEM
- EXISTING TO REMAIN

### "NO WORK" AREAS

- CLEAN ALL AREAS WHERE CONTRACTORS WORK DUSTS OR SOILS ADJACENT ROOMS OR SURFACES EVEN IF SCHEDULED FOR "NO WORK".
- CONTRACTOR SHALL CLEAN ALL ROOMS AND SURFACES AFFECTED BY WORK.

### LEGEND

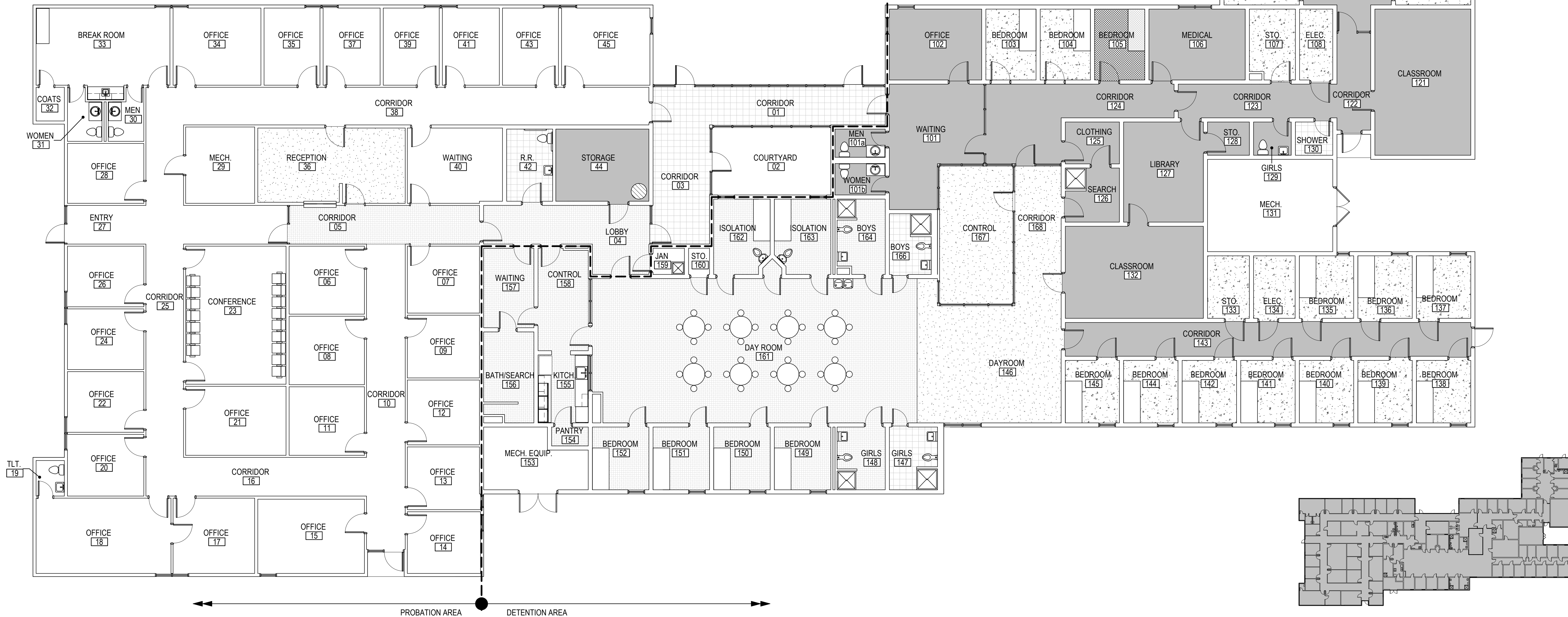
- EXISTING TO REMAIN
- NEW CARPET TILE
- NEW VINYL COMPOSITION TILE
- EXISTING TERRAZZO FLOORING
- NEW RESINIOUS FLOOR COVER
- NEW CERAMIC TILE
- NEW SEALER ON EXISTING CONCRETE
- NEW PADDED ROOM

### GENERAL NOTES

- REFER TO FLOOR PLANS FOR DIMENSIONS AND ADDITIONAL INFORMATION.
- REFER TO PLUMBING SCHEDULE FOR PLUMBING FIXTURES AND EQUIPMENT.
- PROVIDE RUBBER TRANSITION STRIPS AT CHANGES IN FLOOR COVERING. TRANSITIONS IN DOORWAYS SHALL OCCUR UNDER EDGE OF DOOR LEAF, UNLESS EXISTING CONDITION IS OTHERWISE MATCH.

**JOHNSON & PACE INCORPORATED**  
 ENGINEERING ARCHITECTURE INTERIORS  
 310 TURK ST. LONGVIEW, TEXAS 75601  
 (972) 786-1100 FAX (972) 786-1103  
 LICENSE # 4591 (STATE BOARD)

**GREGG COUNTY YOUTH CENTER  
 BUILDING RENOVATIONS  
 310 TURK ST.  
 LONGVIEW, TEXAS 75601**



NO.	REVISIONS	DATE
1	REVISED FINISH SCHEDULE AND KEY	02/15/19

**FLOOR FINISH PLAN**  
 ISSUED FOR PERMITTING

DATE: 9/28/18  
 SCALE: As Indicated  
 PROJECT: APPROVED BY: D.C.  
 SHEET NO.: 1  
 A2.4

THESE DRAWINGS AND RELATED SPECIFICATIONS, INCLUDING ALL DOCUMENTS ON ELECTRONIC MEDIA, WERE PREPARED BY JOHNSON & PACE INCORPORATED. THE INFORMATION CONTAINED HEREIN IS THE PROPERTY OF J.P.I. THE INFORMATION CONTAINED HEREIN SHALL BE USED ONLY FOR THE PROJECT AND SHALL BE KEPT IN CONFIDENTIALITY. NO PART OF THESE DRAWINGS OR SPECIFICATIONS SHALL BE REPRODUCED OR TRANSMITTED IN ANY FORM OR BY ANY MEANS, ELECTRONIC OR MECHANICAL, INCLUDING PHOTOCOPYING, RECORDING, OR BY ANY INFORMATION STORAGE AND RETRIEVAL SYSTEM, WITHOUT THE WRITTEN PERMISSION OF JOHNSON & PACE INCORPORATED. COPYRIGHT © 2018, Johnson & Pace Incorporated.

**1 OVERALL FLOOR FINISH PLAN**  
 SCALE: 1/8" = 1'-0"

