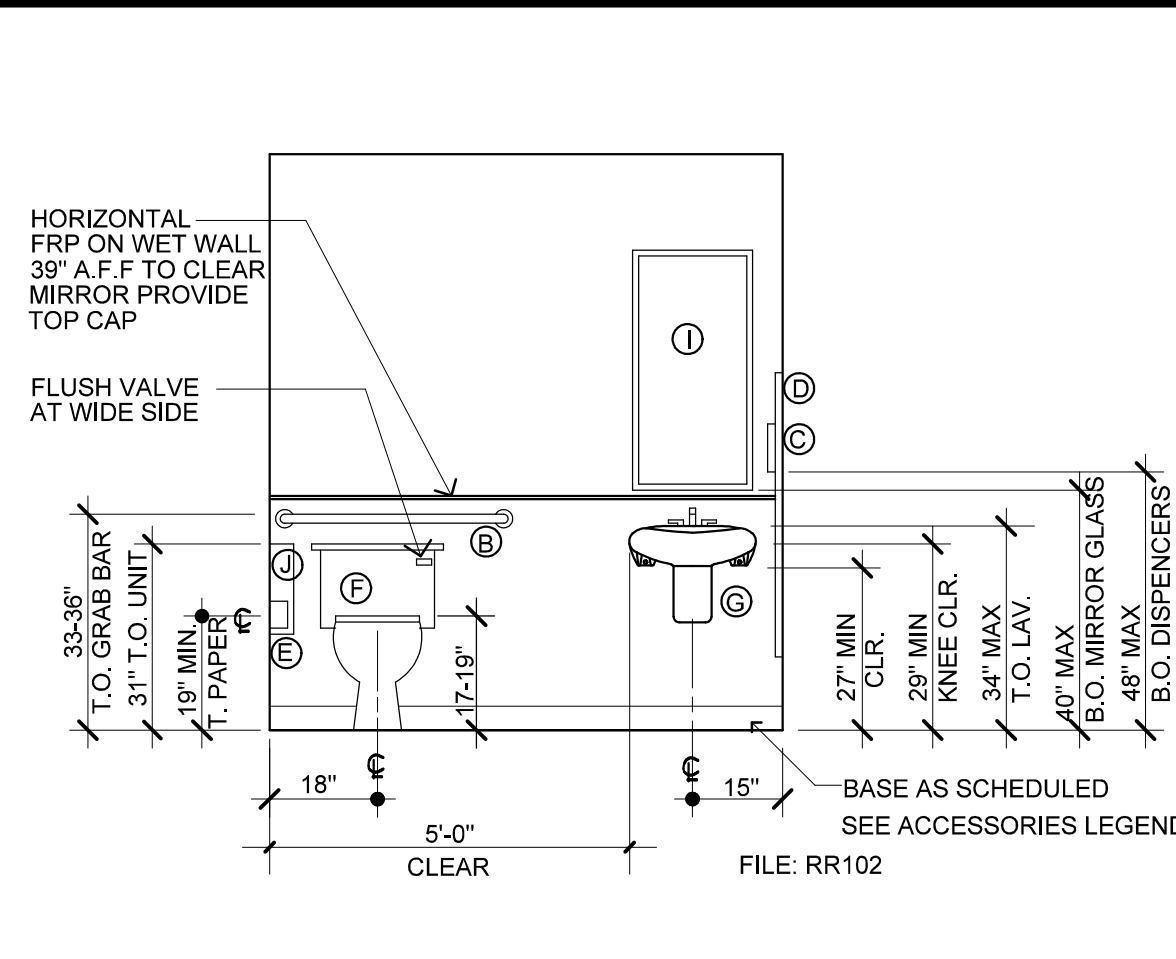
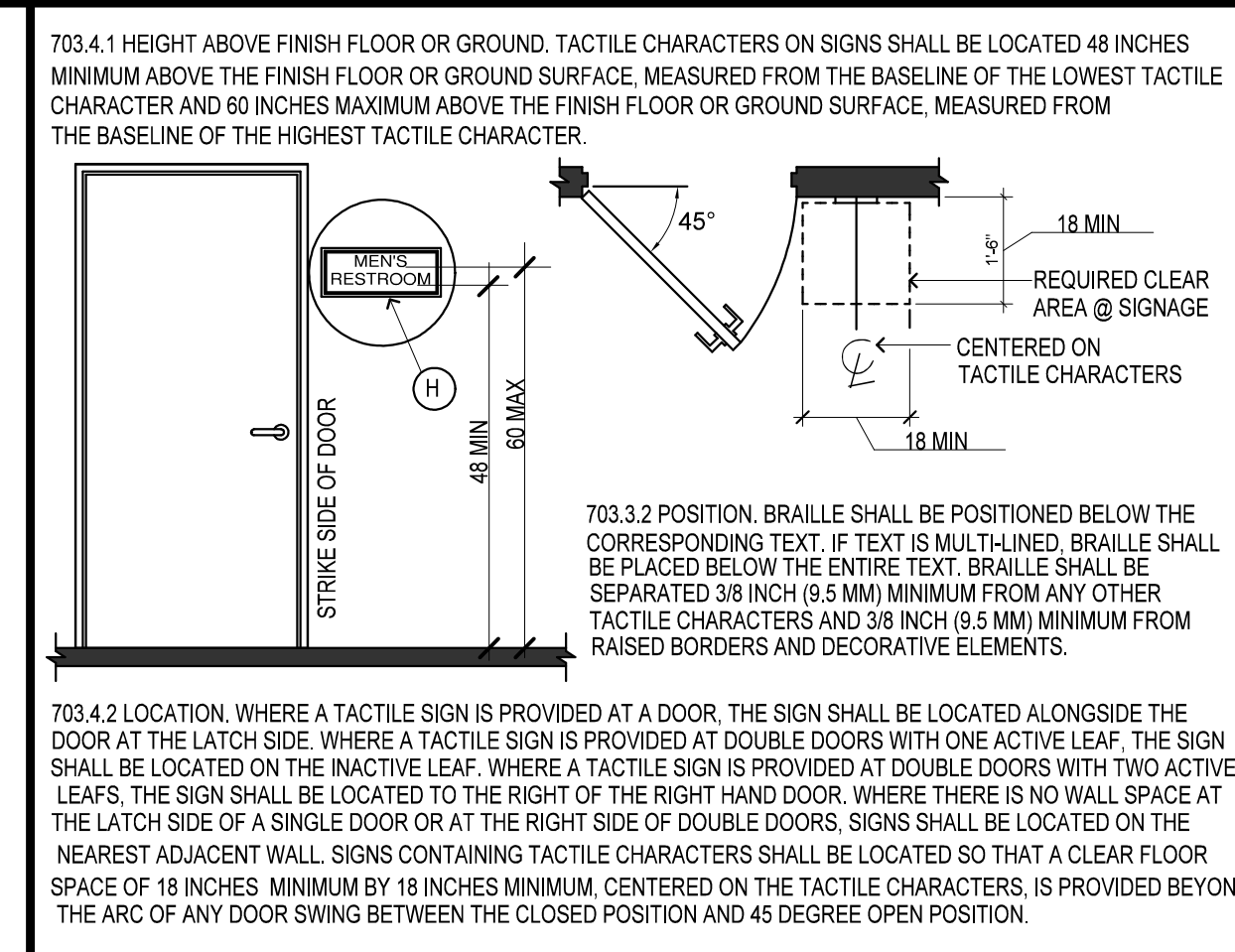


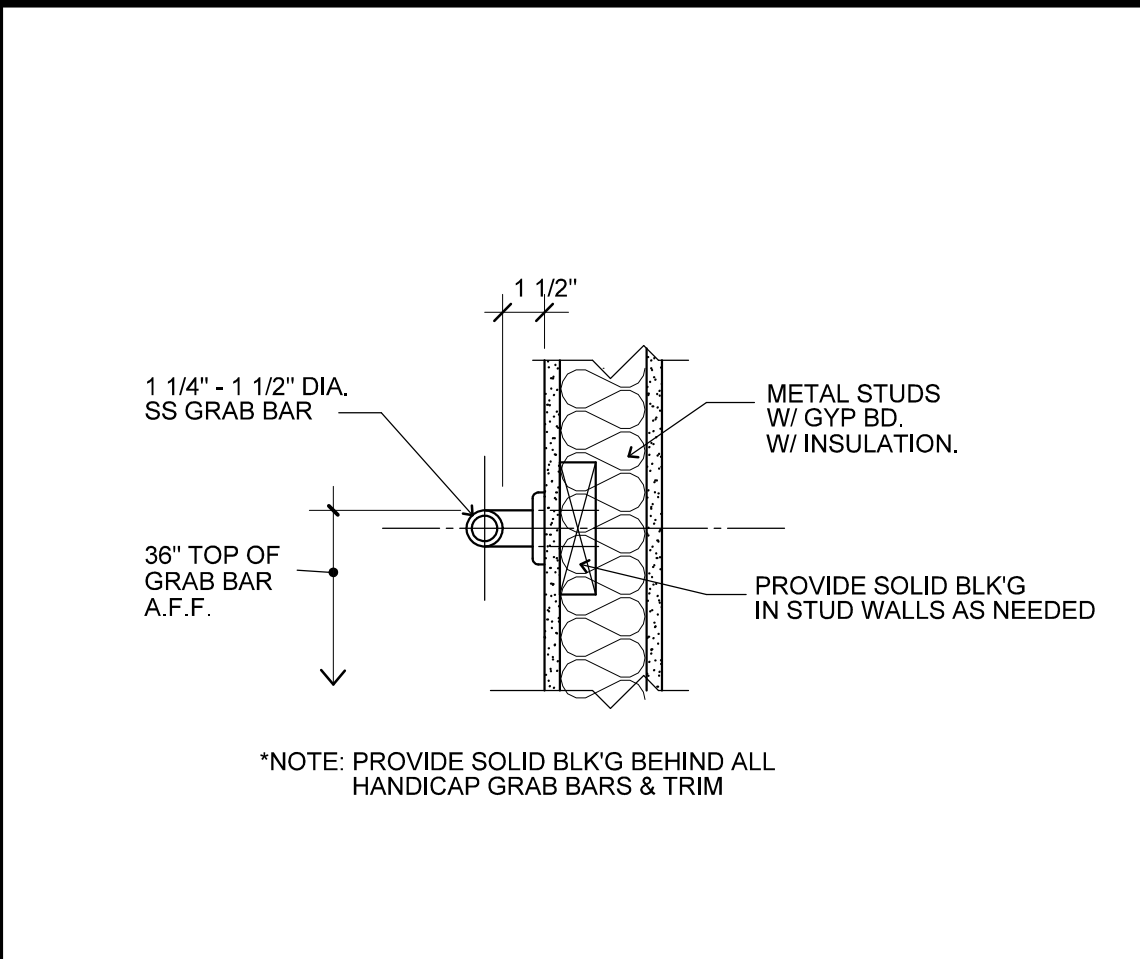
01 T.A.S. REQUIRED TOLERANCES
SCALE: 3/8" = 1'-0"



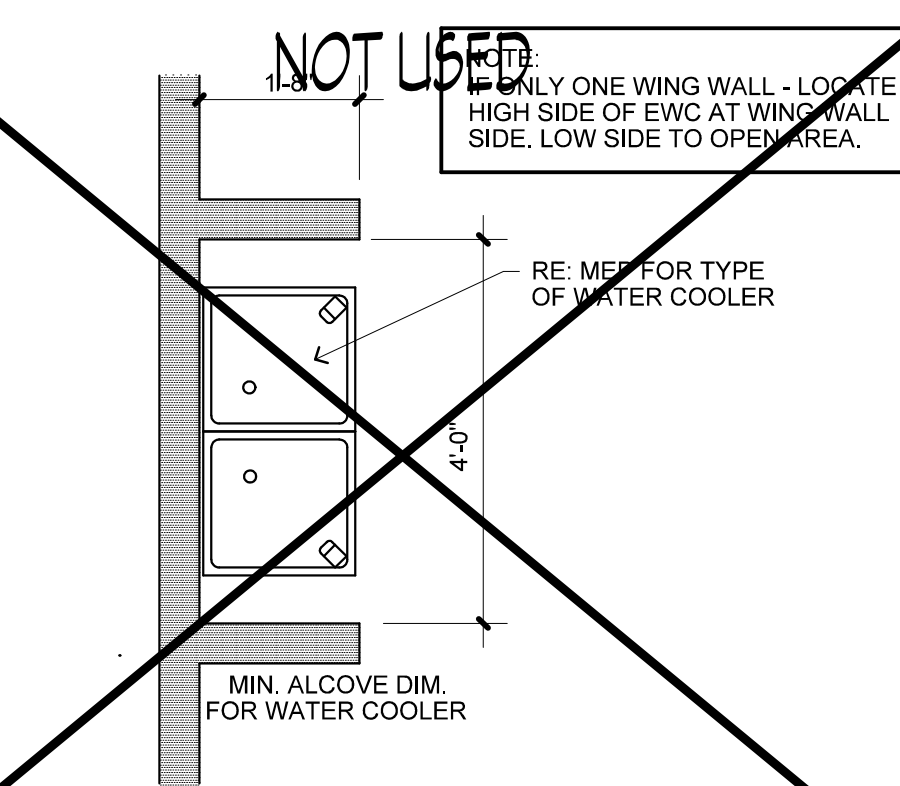
02 T.A.S. REQUIRED TOLERANCES
SCALE: 3/8" = 1'-0"



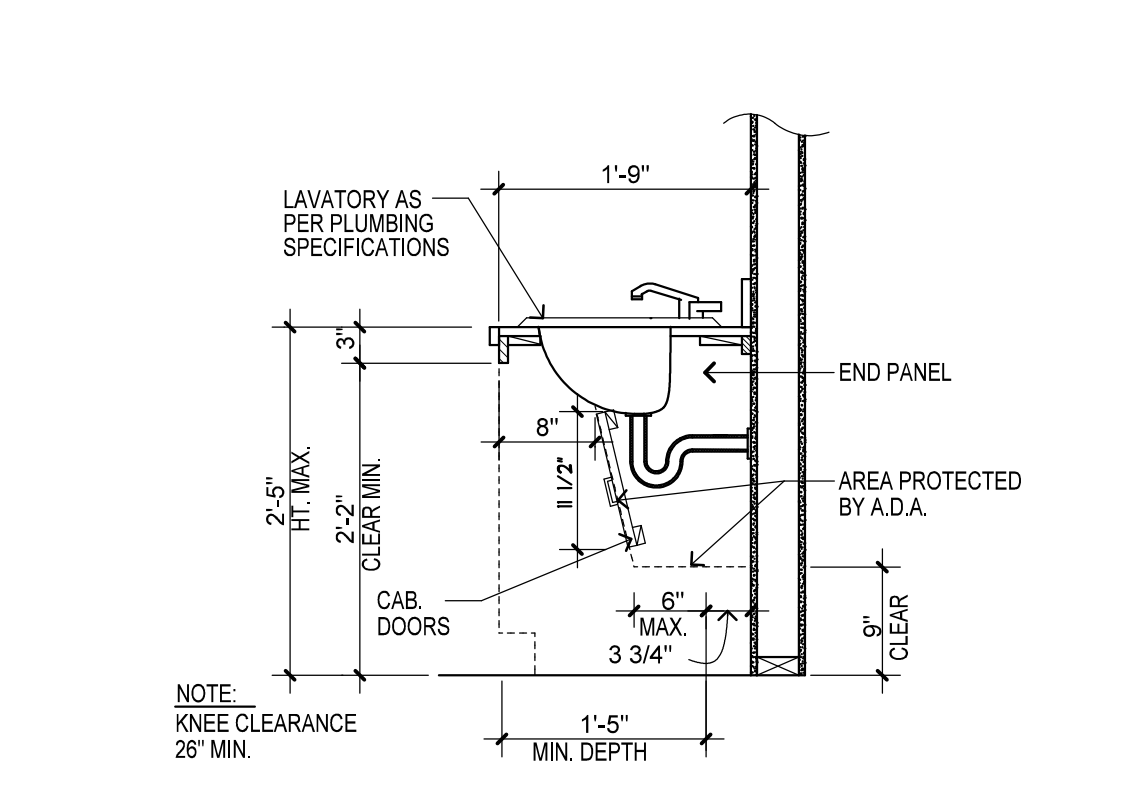
03 RESTROOM SIGNAGE REQUIRED LOCATION
SCALE: 3" = 1'-0"



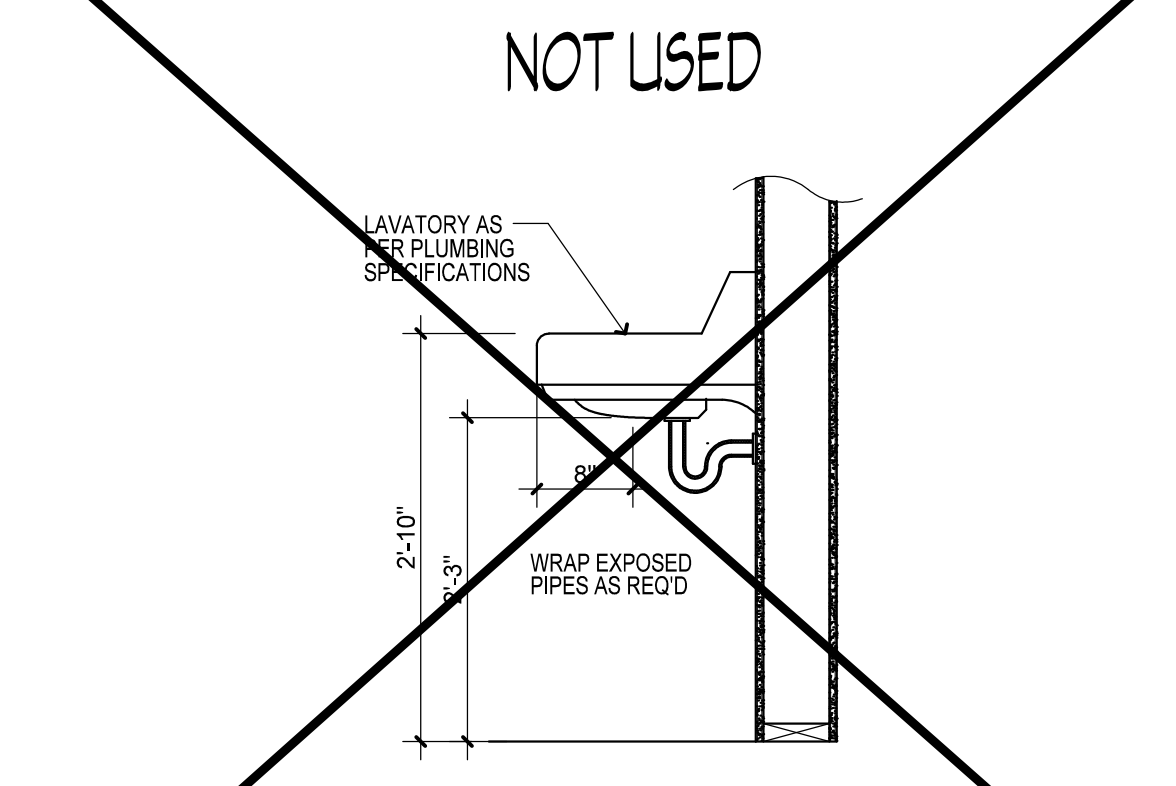
04 GRAB BAR INSTALLATION
SCALE: 3" = 1'-0"



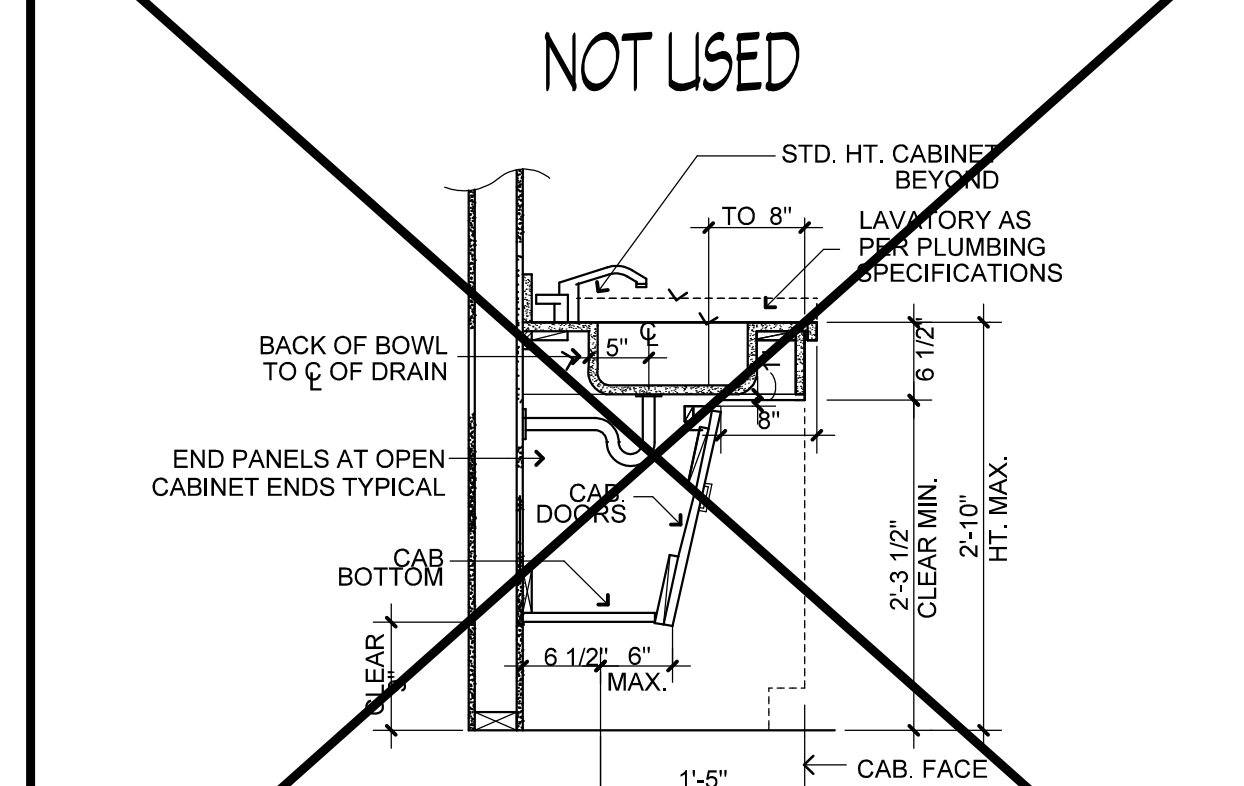
05 HI/LOW EWC CLEARANCES
SCALE: 1/2" = 1'-0"



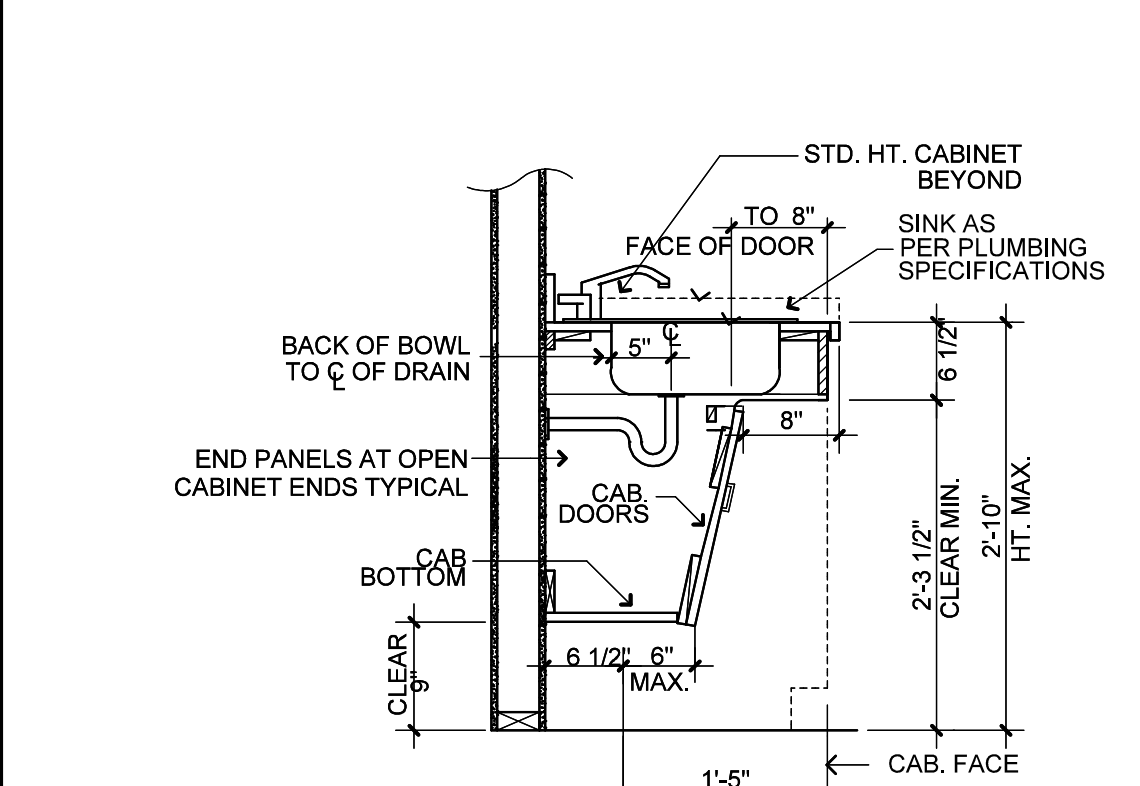
06 LAVATORY SECTION DETAIL
SCALE: 3/4" = 1'-0"



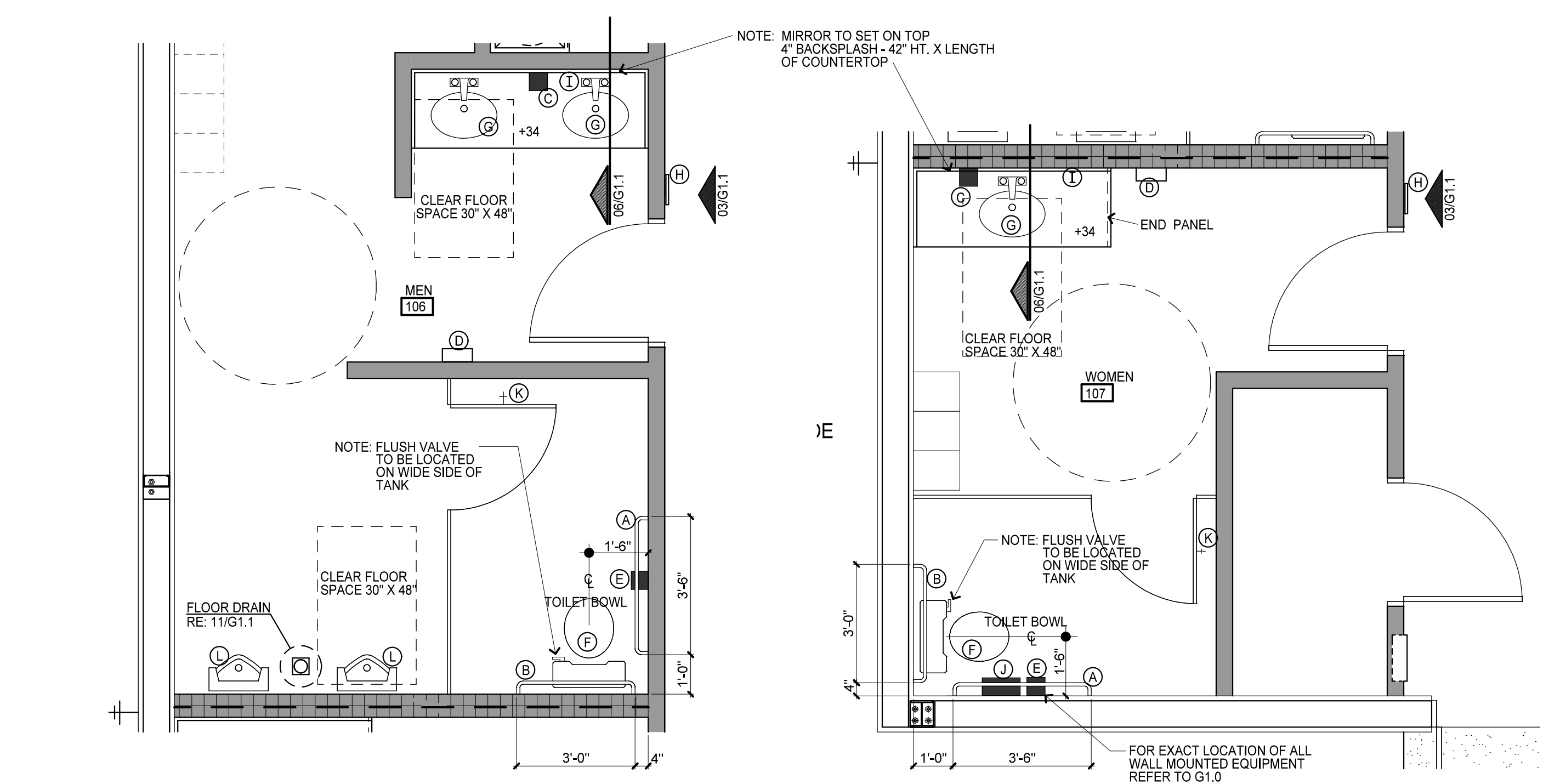
07 LAVATORY SECTION - WALL HUNG
SCALE: 3/4" = 1'-0"



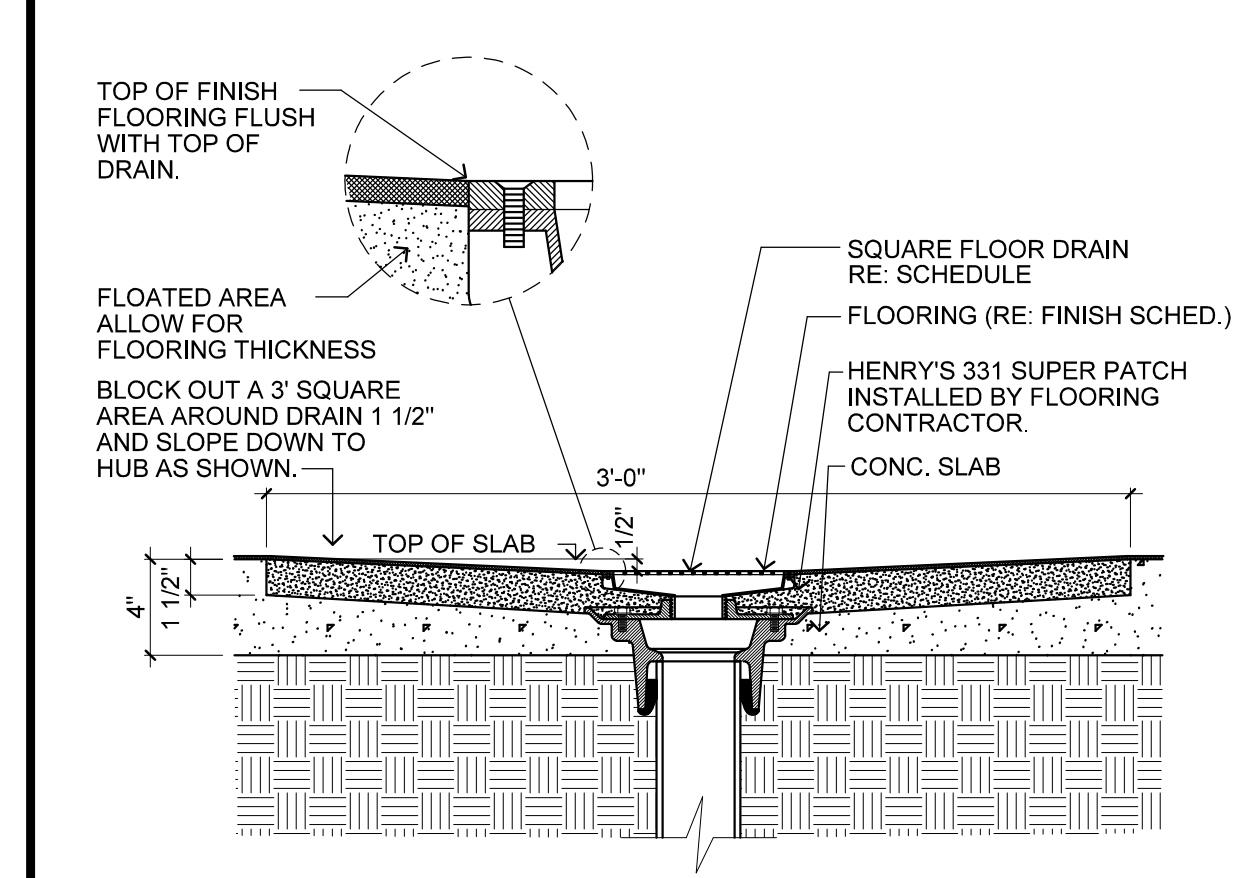
08 H.C. INTEGRAL SINK
SCALE: 3/4" = 1'-0"



09 H.C. SINK
SCALE: 3/4" = 1'-0"



10 ENLARGED RESTROOM PLANS
SCALE: 3/8" = 1'-0"



11 1st FLOOR DRAIN DETAIL
SCALE: 1 1/2" = 1'-0"

HANDICAP MOUNTING HEIGHTS

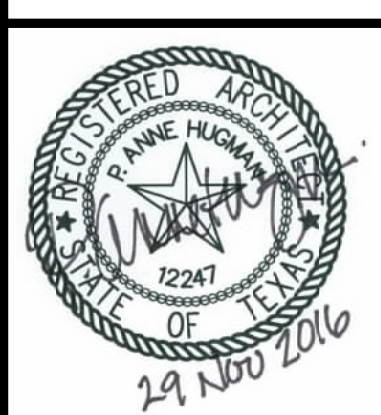
GENERAL - ADULT	
SWITCHES / CONTROLS (CENTERLINE)	
TELEPHONE-WALL (FRONT/SIDE)	48" MAX.
SOAP DISPENSER (FRONT/ SIDE)	48" MAX.
TOWEL DISPENSER (FRONT/ SIDE)	48" MAX.
HAND DRYER (FRONT/ SIDE)	48" MAX.
TOILET PAPER DISPENSER	19" MIN.
MIRROR (LOWER EDGE)	40" MAX.
ELECTRIC WATER COOLER (TO SPOUT OPENING)	36" MAX.
TOILET GRAB BAR (TOP)	36" MAX.
HANDICAP WATER CLOSET (TOP OF SEAT)	19" MAX.
HANDICAP WATER CLOSET FLUSH CONTROLS (PLACE ON WIDE SIDE OF TOILET)	44" MAX.
LAVATORIES (BOTTOM OF APRON-CLEAR)	29" MIN.
LAVATORIES (TOP OF UNIT)	34" MAX.
LAVATORIES (TO FAUCET FROM FRONT EDGE)	24" MAX.
URINAL (RIM OF BASIN)	17" MAX.
URINAL (FLUSH CONTROLS)	44" MAX.
FIRE EXTINGUISHER CABINET (UNIT BOTTOM)	36" MAX.
HANDRAIL (TOP)	34" MAX.
SHOWER STALLS - EXTEND FULL DEPTH OF STALL	
MIN. SIZE	
TOP OF SEAT (TOP)	17" - 19"
GRAB BARS (CENTER)	33" - 36" MAX.
SHOWER CONTROLS FOR 36" X 36" SHOWER	18" CTR.
SHOWER HEAD (TOP FOR FRONTAL APPROACH)	48" MAX.
HEIGHT OF TABLES OR COUNTERS	34" MAX.
KNEE CLEARANCE AT COUNTERS	27" MAX.
CURB RAMPS: PROVIDE 18" DEEP GROOVE, 1/4" WIDE MIN. AT 2" O.C. MAX.	
CLEAR FLOOR SPACE REQUIREMENTS:	
ACCESSIBLE FIXTURES	
HL-LAV.	30" X 48"
HW-C-TOILET	56" X 60"
HL-URINAL	30" X 48"
HW-C-WATER-COOLER	48" X 30"

RESTROOM ACCESSORIES LEGEND

NOT ALL ITEMS MAY PERTAIN TO THIS JOB - SEE DETAILS & ENLARGED FLOOR PLAN

(A)	42" BOBRICK B-5808 GRAB BAR - 1 1/4" DIA., 18 GAUGE STAINLESS STEEL WITH SNAP ON FLANGES FOR CONCEALED MOUNTING.
(B)	36" BOBRICK B-5808 GRAB BAR - 1 1/4" DIA., 18 GAUGE STAINLESS STEEL WITH SNAP ON FLANGES FOR CONCEALED MOUNTING.
(C)	SOAP DISPENSER - BY OWNER
(D)	PAPER TOWEL DISPENSER - BY OWNER
(E)	TOILET PAPER DISPENSER - BY OWNER
(F)	TOILET - RE: PLUMBING FIXTURE SCHEDULE
(G)	LAVATORY - RE: PLUMBING FIXTURE SCHEDULE
(H)	ACCESSIBLE SIGNAGE: REFER SPECS 10400 - LOCATIONS ON 10/G1.1
(I)	MIRROR
(J)	SANITARY NAPKIN DISPOSER - BOBRICK CUNTURA SERIES B-270 SURFACE MOUNTED.
(K)	COAT HOOK - HANG AT 48" HT. MAX. - BOBRICK B-672 ROBE HOOK
(L)	URINAL - RE: PLUMBING FIXTURE SCHEDULE

*URINALS SHALL BE STALL - TYPE, OR WALL - HUNG WITH A TAPERED ELONGATED RIM MOUNTED AT A MAXIMUM OF 17" A.F.F. A TAPERED ELONGATED RIM IS ONE THAT NARROWS TOWARD THE FRONT TO ALLOW A WHEELCHAIR USER TO STRADDLE THE BASIN AND WHICH EXTENDS AT LEAST 14" FROM THE WALL.



PROJECT: New Training Facility
OWNER: Gregg County Precinct 3
Commissioner Gary Boyd
ADDRESS: 6174 F.M. 2206, Longview, Texas 75604

DATE	REVISIONS

THE ELECTRONIC DRAWING FILE AND RELATED SPECIFICATIONS, INCLUDING ALL DOCUMENTS ON ELECTRONIC MEDIA, WERE PREPARED AND RELEASED UNDER THE AUTHORITY OF HUGMAN ARCHITECTURE P.L.L.C. #21098A. AS SUCH, ANY WORKING OR ORIGINAL FILE AND SHALL REMAIN THE PROPERTY OF SUCH FIRM. IT IS THE POLICY OF HUGMAN ARCHITECTURE P.L.L.C. TO FOLLOW THE RULES AND REGULATIONS OF THE TEXAS BOARD OF ARCHITECTURAL EXAMINERS. THE INFORMATION SHOWN HEREON SHALL BE USED ONLY BY THE CLIENT TO WHOM SERVICES ARE RENDERED AND ONLY FOR THE PURPOSE OF DESCRIBING CONSTRUCTION OR INSTALLING THE WORK SHOWN HEREON AT THE DESIGNATED LOCATION ON THE SPECIFICATIONS. ANY UNAUTHORIZED USE OF THESE DOCUMENTS, INCLUDING WITHOUT LIMITATION REPRODUCTION OR ALTERATION IS STRICTLY PROHIBITED AND SHALL CAUSE THE USER OF ANY EXPRESS WARRANTIES AND ALSO SEVER ANY WARRANTIES WHICH MAY ARISE FROM THE CONSTRUCTION OF THE PROJECT. SUCH UNAUTHORIZED USE OR CHANGES, THE SPECIFICATIONS, REPORTS, DOCUMENTS, OR OTHER INFORMATION RELEASED ON OR TRANSMITTED AS ELECTRONIC MEDIA (INCLUDING BUT NOT LIMITED TO LIMITED TO "CAD" DOCUMENTS) ARE SUBJECT TO UNEXPECTED ALTERATION, EITHER INTENTIONAL OR UNINTENTIONAL, DUE TO AMBIGUOUS CAUSES, TRANSMISSION, CONVERSION, MEDIA DEGRADATION, SOFTWARE ERROR OR MANUAL TREATMENT. ACCORDINGLY, ALL SUCH DOCUMENTS ARE PROVIDED TO THE PARTIES FOR INFORMATIONAL PURPOSES ONLY AND NOT AS AN END PRODUCT NOR AS A RECORD DOCUMENT. ANY RELEASE THEREON IS DEEMED TO BE UNREASONABLE AND UNENFORCEABLE. THE BEST AND/OR LATEST HARD COPIES OF THE ARCHITECT'S INSTRUMENTS OF SERVICE ARE THE ONLY TRUE CONTRACT DOCUMENTS OF RECORD.

T.A.S. DETAILS AND INFORMATION

G1.1

BY: HWK
DATE: 29 November 2016