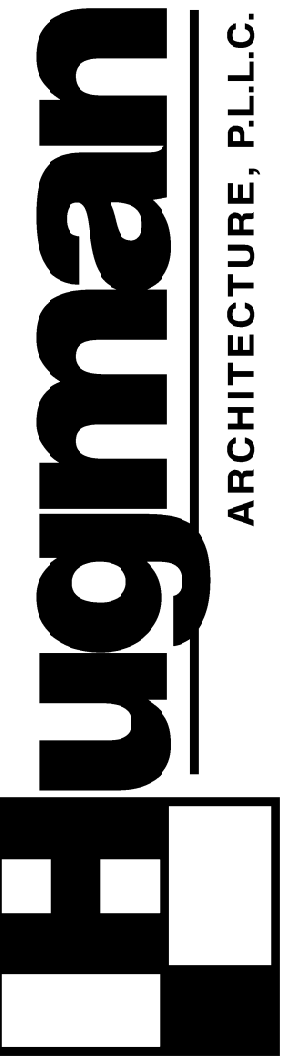


PLUMBING FIXTURE SCHEDULE												
	MARK	MANUFACTURER	MODEL	DESCRIPTION	ACCESSORIES	TRIM OR VALVE	DRAIN	TRAP	HOT	COLD	WASTE	VENT
TOILETS	T-1	KOHLER	K-3519 HIGHLINE	FLOOR MOUNTED WATER CLOSET, VITREOUS CHINA, ELONGATED TOILET BOWL, TAS COMPLIANT	CHURCH 135TT WHITE PLASTIC OPEN FRONT SEAT	SLOAN OPTIMA PLUS MODEL 8111-1.28 SENSOR ACTIVATED	—	INTEGRAL	—	1/2	4	3
URINAL	U-1	KOHLER	K-4991-ET BARDON	WALL HUNG URINAL, TOP SPUD, ELONGATED RIM, WASHOUT ACTION, TAS COMPLIANT	—	SLOAN OPTIMA PLUS MODEL 8180-1.0 SENSOR ACTIVATED	—	INTEGRAL	—	3/4	2	2
LAV SINK	L-1	KOHLER	K-2196 PENNINGTON	SELF RIMMING LAVATORY TAS COMPLIANT	TRUEBRO 102/105-W PIPE GUARDS	CORALAIS K15265-4 8" CENTERS	McGUIRE 155A	McGUIRE 8902	1/2	1/2	1 1/2	1 1/4
S.S. SINK	S-1	ELKAY	LRAD331955	33" L X 19.5" W X 5.5" DEEP DOUBLE BOWL SINK WITH (1) SINGLE CENTER HOLE	PROVIDE INSULATION SUPPLIES, DRAIN WITH PVC COVER	ELKAY MODEL LK800GN08T4	McGUIRE 151A	McGUIRE 8912	1/2	1/2	1 1/2	1 1/4
JANITOR	SS	MOLDED-STONE	MSB 2424	24X24X10 MOLD-STONE MOP BASIN	HOSE & HOSE HOLDER, S.S. BUMPER GUARDS, WALL GUARDS, SERVICE FAUCET, MOP HANGER	T & S BRASS AND BRONZE WORKS, INC. B-0865-BSTR	INTEGRAL	CAST IRON DEEP SEAL	1/2	1/2	3	2
WALL PLATFORM	SWHP	HOLDRITE	40-SWHP	SUSPENDED WATER HEATER PLATFORM	PLATFORM / DRAIN PAN SUSPEND W/ ALLTHREAD (4)	—	—	—	—	—	—	—
FLOOR DRAIN	FD	WADE	1103G6	TYPE 304 STAINLESS STEEL SQUARE STAINER WITH SQUARE HOLE PATTERN GRATE, VANDAL PROOF	—	—	—	CAST IRON DEEP SEAL	—	1/2	3	2
TRAPS	TP	PPP, INC.	PRIME RITE	TRAP PRIMER VALVE	DISTRIBUTION UNIT AS APPLICABLE FOR MULTIPLE FLOOR DRAINS	—	—	—	—	1/2	—	—
	TS	THE GREEN SOLUTION	SS4009V	TRAP SEALER	—	—	—	—	—	—	—	—
WATER HEATER	EWHP	BRADFORD WHITE	RE230L6	28 GALLON TANK ELECTRIC WATER HEATER	—	—	—	—	1/2	1/2	—	—
HOSE BIB	WH	WOODFORD	65	ANIT-SIPHON FREEZE LESS WALL HYDRANT (24" AFF)	EXTERIOR FINISH - CHROME	FITS ONE STANDARD MODULAR BRICK COURSE	—	—	—	3/4	—	—
EYE WASH SINK	EWS	BRADLEY	S19314DCBF	COMBINATION DRENCH SHOWER AND HALO EYEWASH STATION	HALO EYEFACE WASH, BARRIER-FREE PLASTIC SHOWER HEAD, STAINLESS STEEL BOWL W/ DUST COVER	—	—	—	—	—	—	—

LIGHTING SCHEDULE						
MARK	VOLT	MOUNT	MANUF.	CATALOG NO.	LAMP DATA	REMARKS
A	120	RECESS	COOPER OR EQUAL	APT-232	(2) 32 WATT T8 FLUORESCENT	NON-AIR 2X4 LENS TROFFER. WHITE STEEL DOOR. .125" ACRYLIC LENS. LOW HARMONIC ELECTRONIC BALLAST.
AE	120	RECESS	COOPER OR EQUAL	APT-232-EL		NON-AIR 2X4 LENS TROFFER. WHITE STEEL DOOR. .125" ACRYLIC LENS. LOW HARMONIC ELECTRONIC BALLAST. EMERGENCY INSTALLED.
B	120	SUSPENDED	METALUX OR EQUAL	DF-232-120-EB8	(2) 32 WATT T8 FLUORESCENT	4FT SUSPENDED WITH SOLID TOP PARABOLIC REFLECTOR.
C	120	SURFACE	LIGHTWAY OR EQUAL	BDFV-36	(2) F21T5 FLUORESCENT	3FT WALL MOUNTED VANTY FIXTURE. MOUNT ABOVE MIRROR. FINISH: SATIN BRONZE.
D	120	SURFACE	LUMINAIRE LED OR EQUAL	SWP1212-14HP-4000K-120-CP	900 LUMEN LED (NOMINAL)	12" SQUARE UNDER CANOPY FIXTURE. CLEAR PRISMATIC LENS. * HOUSING COLOR BRZ.
X	120	UNIVERSAL	LITHONIA EQUAL: DUAL-LITE SURE-LITE	LQM S W 3 R 120/277 EL N SD LXURWEI LPX7SD	INTEGRAL RED LED	INJECTION MOLDED, WHITE, THERMOPLASTIC HOUSING. RED LETTERING. INTEGRAL BATTERY. CEILING MOUNT OR MOUNT ABOVE DOOR AS INDICATED ON PLANS. FACES AS REQUIRED. CHEVRONS AS INDICATED. TEST SWITCH. SELF-DIAGNOSTICS.
EF	120	RECESS	BROAN	QTXE SERIES	900 LUMEN LED (NOMINAL)	SIZE AS REQUIRED BY CODE. MINIMUM 150 CFM. SUPPORT FROM STRUCTURE DUCT TO EXTERIOR.

NOTES:
 1. PROVIDE EMERGENCY BATTERY BACK-UP BALLAST AS INDICATED "AE".
 2. FLUORESCENT FIXTURE BALLASTS SHALL BE ELECTRONIC, LOW HARMONIC TYPE, WITH LESS THAN 10% THD.
 3. COORDINATE ALL SUSPENDED FIXTURE MOUNTING HEIGHTS WITH ARCHITECT AND MECHANICAL CONTRACTOR.
 4. COORDINATE ALL FIXTURE COLORS WITH ARCHITECT PRIOR TO PURCHASING.
 5. ALL LIGHTING CONTROLS AND COVER PLATES TO BE WHITE.



PROJECT: New Training Facility
 OWNER: Gregg County Precinct 3
 Commissioner Gary Boyd
 ADDRESS: 6174 F.M. 2206, Longview, Texas 75604

DATE	REVISIONS

THE ELECTRONIC DRAWING FILE AND RELATED SPECIFICATIONS, INCLUDING ALL DOCUMENTS ON ELECTRONIC MEDIA, WERE PREPARED AND RELEASED UNDER THE AUTHORITY OF HUGMAN ARCHITECTURE P.L.L.C. #0094. AS NOTED, WHO MAKING THE ORIGINAL FILE AND SHALL REMAIN THE PROPERTY OF SUCH. PURSUANT TO RULE 1309F OF THE RULES AND REGULATIONS OF THE TEXAS BOARD OF ARCHITECTURAL EXAMINERS, THE INFORMATION SHOWN HEREON SHALL BE USED ONLY BY THE CLIENT TO WHOM SERVICES ARE RENDERED; AND ONLY FOR THE PURPOSE OF DESCRIBING CONSTRUCTION OR INSTALLING THE WORK SHOWN HEREON AT THE DESIGNATED LOCATION ON THE SPECIFICATIONS. ANY UNAUTHORIZED USE OF THESE DOCUMENTS, INCLUDING WITHOUT LIMITATION REPRODUCTION OR ALTERATION IS STRICTLY PROHIBITED AND SHALL CAUSE THE USER OF ANY EXPRESSED WARRANTIES AND ALSO SEVER ANY WARRANTIES WHICH MAY ARISE FROM SUCH CONSTRUCTION. THE USER OF SUCH UNAUTHORIZED USE OR CHANGES, THE PARTIES RESPONSIBLE FOR SUCH USE, SHALL BE RESPONSIBLE FOR ANY SUCH UNAUTHORIZED USE OR CHANGES. TRANSMISSION, CONVERSION, MEDIA DEGRADATION, SOFTWARE ERROR OR HUMANAL TREATMENT, ACCORDINGLY, ALL SUCH DOCUMENTS ARE PROVIDED TO THE PARTIES FOR INFORMATIONAL PURPOSES ONLY AND NOT AS AN END PRODUCT NOR AS A RECORD DOCUMENT. ANY RELIANCE THEREON IS DEEMED TO BE UNREASONABLE AND UNDEFENDABLE. THE BIDDING AND OR FURNISHED HARD COPIES OF THE ARCHITECT'S INSTRUMENTS OF SERVICE ARE THE ONLY TRUE CONTRACT DOCUMENTS OF RECORD.

SCHEDULES

A2.2

BY: HWK
 DATE: 29 November 2016