

# Schlitz To Build \$12-Million Can Plant In Longview

300 Employees—\$4-Million Annual Payroll

## The Weather

NORTHEAST TEXAS — Cloudy Thursday and Friday. Warm Thursday. Low Thursday night and Friday. High Thursday and Friday near 68.

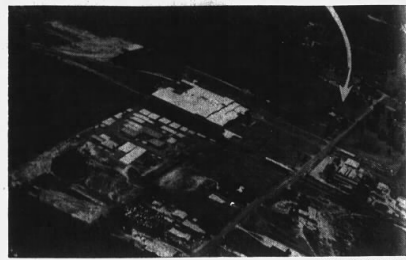
# Longview Morning Journal

East Texas EDITION

→ "East Texas' Largest and Most Complete Morning Newspaper" ←

World Wide Service of Associated Press • United Press International News Service

VOL. 43—NO. 276 LONGVIEW, TEXAS, THURSDAY MORNING, NOVEMBER 22, 1973 42 PAGES—PRICE 10 CENTS



New Schlitz Can Plant Site

The arrow above location of a 38-acre site at the intersection of U.S. Highway 80 and Fisher Road in West Industrial District in Longview where the Joe Schlitz Brewing Company container division will erect a \$12-million can manufacturing plant. Announcement was made by Robert A. Uhllein, Jr., Schlitz board chairman and president. The site is south of U.S. 80 and on west side of Fisher Road.

## New Facility To Serve Brewery

Special To The News — The Joe Schlitz Brewing Company Wednesday announced plans to build a can manufacturing plant in Longview to serve its brewery there.

The Longview facility, to cost \$12,000,000, will be the first can plant operated by the Schlitz Container Division. The others are at Tampa, Fla., and Oak Creek, Wis.

Robert A. Uhllein, Jr., Schlitz chairman of the board and president, said work on the 38-acre site will begin next month and that production will begin in 1975.

The new plant will employ about 300 persons and result in nearly \$4,000,000 in local wages and salaries each year.

The plant will be managed by James M. Boshelmann. It will be located on a site of about 38 acres about 1.5 miles south of U.S. Highway 80 at Marshall Avenue and Fisher Road in the West Longview Industrial District.

1,800 people employed by Texas Eastern Company last year's wage dividend of \$12,300,000 and declared a quarterly cash dividend of 2 cents a share and an extra dividend of 20 cents a share on the company's common stock.

The wage dividend will be paid on Friday, March 23, 1974, and the extra dividend is payable Jan. 15, 1974, to shareholders of record on Dec. 3, 1973.

The wage dividend will be approximately \$3,250,000 for about 1,800 people employed by Texas Eastern Company last year's wage dividend of \$12,300,000 and declared a quarterly cash dividend of 2 cents a share and an extra dividend of 20 cents a share on the company's common stock.

The wage dividend will be paid on Friday, March 23, 1974, and the extra dividend is payable Jan. 15, 1974, to shareholders of record on Dec. 3, 1973.

The wage dividend will be approximately \$3,250,000 for about 1,800 people employed by Texas Eastern Company last year's wage dividend of \$12,300,000 and declared a quarterly cash dividend of 2 cents a share and an extra dividend of 20 cents a share on the company's common stock.

The wage dividend will be paid on Friday, March 23, 1974, and the extra dividend is payable Jan. 15, 1974, to shareholders of record on Dec. 3, 1973.

The wage dividend will be approximately \$3,250,000 for about 1,800 people employed by Texas Eastern Company last year's wage dividend of \$12,300,000 and declared a quarterly cash dividend of 2 cents a share and an extra dividend of 20 cents a share on the company's common stock.

The wage dividend will be paid on Friday, March 23, 1974, and the extra dividend is payable Jan. 15, 1974, to shareholders of record on Dec. 3, 1973.

The wage dividend will be approximately \$3,250,000 for about 1,800 people employed by Texas Eastern Company last year's wage dividend of \$12,300,000 and declared a quarterly cash dividend of 2 cents a share and an extra dividend of 20 cents a share on the company's common stock.

The wage dividend will be paid on Friday, March 23, 1974, and the extra dividend is payable Jan. 15, 1974, to shareholders of record on Dec. 3, 1973.

The wage dividend will be approximately \$3,250,000 for about 1,800 people employed by Texas Eastern Company last year's wage dividend of \$12,300,000 and declared a quarterly cash dividend of 2 cents a share and an extra dividend of 20 cents a share on the company's common stock.

The wage dividend will be paid on Friday, March 23, 1974, and the extra dividend is payable Jan. 15, 1974, to shareholders of record on Dec. 3, 1973.

The wage dividend will be approximately \$3,250,000 for about 1,800 people employed by Texas Eastern Company last year's wage dividend of \$12,300,000 and declared a quarterly cash dividend of 2 cents a share and an extra dividend of 20 cents a share on the company's common stock.

The wage dividend will be paid on Friday, March 23, 1974, and the extra dividend is payable Jan. 15, 1974, to shareholders of record on Dec. 3, 1973.

The wage dividend will be approximately \$3,250,000 for about 1,800 people employed by Texas Eastern Company last year's wage dividend of \$12,300,000 and declared a quarterly cash dividend of 2 cents a share and an extra dividend of 20 cents a share on the company's common stock.

The wage dividend will be paid on Friday, March 23, 1974, and the extra dividend is payable Jan. 15, 1974, to shareholders of record on Dec. 3, 1973.

The wage dividend will be approximately \$3,250,000 for about 1,800 people employed by Texas Eastern Company last year's wage dividend of \$12,300,000 and declared a quarterly cash dividend of 2 cents a share and an extra dividend of 20 cents a share on the company's common stock.

The wage dividend will be paid on Friday, March 23, 1974, and the extra dividend is payable Jan. 15, 1974, to shareholders of record on Dec. 3, 1973.

The wage dividend will be approximately \$3,250,000 for about 1,800 people employed by Texas Eastern Company last year's wage dividend of \$12,300,000 and declared a quarterly cash dividend of 2 cents a share and an extra dividend of 20 cents a share on the company's common stock.

The wage dividend will be paid on Friday, March 23, 1974, and the extra dividend is payable Jan. 15, 1974, to shareholders of record on Dec. 3, 1973.

The wage dividend will be approximately \$3,250,000 for about 1,800 people employed by Texas Eastern Company last year's wage dividend of \$12,300,000 and declared a quarterly cash dividend of 2 cents a share and an extra dividend of 20 cents a share on the company's common stock.

The wage dividend will be paid on Friday, March 23, 1974, and the extra dividend is payable Jan. 15, 1974, to shareholders of record on Dec. 3, 1973.

The wage dividend will be approximately \$3,250,000 for about 1,800 people employed by Texas Eastern Company last year's wage dividend of \$12,300,000 and declared a quarterly cash dividend of 2 cents a share and an extra dividend of 20 cents a share on the company's common stock.

The wage dividend will be paid on Friday, March 23, 1974, and the extra dividend is payable Jan. 15, 1974, to shareholders of record on Dec. 3, 1973.

The wage dividend will be approximately \$3,250,000 for about 1,800 people employed by Texas Eastern Company last year's wage dividend of \$12,300,000 and declared a quarterly cash dividend of 2 cents a share and an extra dividend of 20 cents a share on the company's common stock.

The wage dividend will be paid on Friday, March 23, 1974, and the extra dividend is payable Jan. 15, 1974, to shareholders of record on Dec. 3, 1973.

The wage dividend will be approximately \$3,250,000 for about 1,800 people employed by Texas Eastern Company last year's wage dividend of \$12,300,000 and declared a quarterly cash dividend of 2 cents a share and an extra dividend of 20 cents a share on the company's common stock.

The wage dividend will be paid on Friday, March 23, 1974, and the extra dividend is payable Jan. 15, 1974, to shareholders of record on Dec. 3, 1973.

The wage dividend will be approximately \$3,250,000 for about 1,800 people employed by Texas Eastern Company last year's wage dividend of \$12,300,000 and declared a quarterly cash dividend of 2 cents a share and an extra dividend of 20 cents a share on the company's common stock.

The wage dividend will be paid on Friday, March 23, 1974, and the extra dividend is payable Jan. 15, 1974, to shareholders of record on Dec. 3, 1973.

The wage dividend will be approximately \$3,250,000 for about 1,800 people employed by Texas Eastern Company last year's wage dividend of \$12,300,000 and declared a quarterly cash dividend of 2 cents a share and an extra dividend of 20 cents a share on the company's common stock.

The wage dividend will be paid on Friday, March 23, 1974, and the extra dividend is payable Jan. 15, 1974, to shareholders of record on Dec. 3, 1973.

The wage dividend will be approximately \$3,250,000 for about 1,800 people employed by Texas Eastern Company last year's wage dividend of \$12,300,000 and declared a quarterly cash dividend of 2 cents a share and an extra dividend of 20 cents a share on the company's common stock.

The wage dividend will be paid on Friday, March 23, 1974, and the extra dividend is payable Jan. 15, 1974, to shareholders of record on Dec. 3, 1973.

The wage dividend will be approximately \$3,250,000 for about 1,800 people employed by Texas Eastern Company last year's wage dividend of \$12,300,000 and declared a quarterly cash dividend of 2 cents a share and an extra dividend of 20 cents a share on the company's common stock.

The wage dividend will be paid on Friday, March 23, 1974, and the extra dividend is payable Jan. 15, 1974, to shareholders of record on Dec. 3, 1973.

The wage dividend will be approximately \$3,250,000 for about 1,800 people employed by Texas Eastern Company last year's wage dividend of \$12,300,000 and declared a quarterly cash dividend of 2 cents a share and an extra dividend of 20 cents a share on the company's common stock.

The wage dividend will be paid on Friday, March 23, 1974, and the extra dividend is payable Jan. 15, 1974, to shareholders of record on Dec. 3, 1973.

The wage dividend will be approximately \$3,250,000 for about 1,800 people employed by Texas Eastern Company last year's wage dividend of \$12,300,000 and declared a quarterly cash dividend of 2 cents a share and an extra dividend of 20 cents a share on the company's common stock.

The wage dividend will be paid on Friday, March 23, 1974, and the extra dividend is payable Jan. 15, 1974, to shareholders of record on Dec. 3, 1973.

The wage dividend will be approximately \$3,250,000 for about 1,800 people employed by Texas Eastern Company last year's wage dividend of \$12,300,000 and declared a quarterly cash dividend of 2 cents a share and an extra dividend of 20 cents a share on the company's common stock.

The wage dividend will be paid on Friday, March 23, 1974, and the extra dividend is payable Jan. 15, 1974, to shareholders of record on Dec. 3, 1973.

The wage dividend will be approximately \$3,250,000 for about 1,800 people employed by Texas Eastern Company last year's wage dividend of \$12,300,000 and declared a quarterly cash dividend of 2 cents a share and an extra dividend of 20 cents a share on the company's common stock.

The wage dividend will be paid on Friday, March 23, 1974, and the extra dividend is payable Jan. 15, 1974, to shareholders of record on Dec. 3, 1973.

The wage dividend will be approximately \$3,250,000 for about 1,800 people employed by Texas Eastern Company last year's wage dividend of \$12,300,000 and declared a quarterly cash dividend of 2 cents a share and an extra dividend of 20 cents a share on the company's common stock.

The wage dividend will be paid on Friday, March 23, 1974, and the extra dividend is payable Jan. 15, 1974, to shareholders of record on Dec. 3, 1973.

The wage dividend will be approximately \$3,250,000 for about 1,800 people employed by Texas Eastern Company last year's wage dividend of \$12,300,000 and declared a quarterly cash dividend of 2 cents a share and an extra dividend of 20 cents a share on the company's common stock.

The wage dividend will be paid on Friday, March 23, 1974, and the extra dividend is payable Jan. 15, 1974, to shareholders of record on Dec. 3, 1973.

The wage dividend will be approximately \$3,250,000 for about 1,800 people employed by Texas Eastern Company last year's wage dividend of \$12,300,000 and declared a quarterly cash dividend of 2 cents a share and an extra dividend of 20 cents a share on the company's common stock.

The wage dividend will be paid on Friday, March 23, 1974, and the extra dividend is payable Jan. 15, 1974, to shareholders of record on Dec. 3, 1973.

The wage dividend will be approximately \$3,250,000 for about 1,800 people employed by Texas Eastern Company last year's wage dividend of \$12,300,000 and declared a quarterly cash dividend of 2 cents a share and an extra dividend of 20 cents a share on the company's common stock.

The wage dividend will be paid on Friday, March 23, 1974, and the extra dividend is payable Jan. 15, 1974, to shareholders of record on Dec. 3, 1973.

The wage dividend will be approximately \$3,250,000 for about 1,800 people employed by Texas Eastern Company last year's wage dividend of \$12,300,000 and declared a quarterly cash dividend of 2 cents a share and an extra dividend of 20 cents a share on the company's common stock.

# Middle East Peace Efforts Falter

## Living Costs Jump

WASHINGTON (UPI)—The cost of living took its biggest jump in a half-year during October, spurred by price boosts for gasoline, food and clothing, the Labor Department reported Wednesday.

The increase was 0.8 per cent, despite a drop in energy prices, and meant that goods and services costing 100 in 1967 had a price tag of 113.08 in October. It was the highest price boost since March.

Overall, the Consumer Price Index has risen 7.8 per cent over the past 12 months—the highest increase for that period in over 20 years.

Retail sales prices dropped last October, but 0.2 per cent for the total other services during October. But there was a surge in non-food costs, including services, such as mortgage interest which went up 1.5 per cent.

At the same time, the department said in a separate report that wage earners failed to keep pace with the cost of living increase, an average 0.4 per cent, for the year.

Director John T. Heine of the Cost of Living Council said workers had given in the "steepest rate" for an annual 11 percent in 1973.

Where To Find: ABB... Classified... Finance... Health... Insurance... Labor... Markets... News... Sports... TV, Radio... Women's News...

WASHINGTON (UPI)—Middle East peace efforts faltered Wednesday as the United States and Israel continued to disagree on the terms of a proposed ceasefire.

Secretary of State Henry Kissinger wanted the U.S. to make a unilateral move to the ceasefire. The Israeli cabinet continued to insist on a ceasefire only if the U.S. agreed to a withdrawal of its troops from the West Bank.

Earlier in a visit to civilian and military settlements on the Golan Heights front in Syria, Mrs. Kissinger was said to have expressed pressure from the United States on the withdrawal question.

"It is possible to present and meet will be presented without any doubt," Secretary of State Henry Kissinger wanted the U.S. to make a unilateral move to the ceasefire.

The Israeli cabinet continued to insist on a ceasefire only if the U.S. agreed to a withdrawal of its troops from the West Bank.

Earlier in a visit to civilian and military settlements on the Golan Heights front in Syria, Mrs. Kissinger was said to have expressed pressure from the United States on the withdrawal question.

"It is possible to present and meet will be presented without any doubt," Secretary of State Henry Kissinger wanted the U.S. to make a unilateral move to the ceasefire.

The Israeli cabinet continued to insist on a ceasefire only if the U.S. agreed to a withdrawal of its troops from the West Bank.

Earlier in a visit to civilian and military settlements on the Golan Heights front in Syria, Mrs. Kissinger was said to have expressed pressure from the United States on the withdrawal question.

"It is possible to present and meet will be presented without any doubt," Secretary of State Henry Kissinger wanted the U.S. to make a unilateral move to the ceasefire.

The Israeli cabinet continued to insist on a ceasefire only if the U.S. agreed to a withdrawal of its troops from the West Bank.

Earlier in a visit to civilian and military settlements on the Golan Heights front in Syria, Mrs. Kissinger was said to have expressed pressure from the United States on the withdrawal question.

"It is possible to present and meet will be presented without any doubt," Secretary of State Henry Kissinger wanted the U.S. to make a unilateral move to the ceasefire.

The Israeli cabinet continued to insist on a ceasefire only if the U.S. agreed to a withdrawal of its troops from the West Bank.

## Texas Eastman: 83,325,000

## Eastman Kodak Wage Dividend Voted

Estimated At \$124,200,000

Eastman Kodak Company directors today voted a wage dividend estimated at \$124,200,000 and declared a quarterly cash dividend of 2 cents a share and an extra dividend of 20 cents a share on the company's common stock.

The wage dividend will be paid on Friday, March 23, 1974, and the extra dividend is payable Jan. 15, 1974, to shareholders of record on Dec. 3, 1973.

The wage dividend will be approximately \$3,250,000 for about 1,800 people employed by Texas Eastern Company last year's wage dividend of \$12,300,000 and declared a quarterly cash dividend of 2 cents a share and an extra dividend of 20 cents a share on the company's common stock.

The wage dividend will be paid on Friday, March 23, 1974, and the extra dividend is payable Jan. 15, 1974, to shareholders of record on Dec. 3, 1973.

The wage dividend will be approximately \$3,250,000 for about 1,800 people employed by Texas Eastern Company last year's wage dividend of \$12,300,000 and declared a quarterly cash dividend of 2 cents a share and an extra dividend of 20 cents a share on the company's common stock.

The wage dividend will be paid on Friday, March 23, 1974, and the extra dividend is payable Jan. 15, 1974, to shareholders of record on Dec. 3, 1973.

The wage dividend will be approximately \$3,250,000 for about 1,800 people employed by Texas Eastern Company last year's wage dividend of \$12,300,000 and declared a quarterly cash dividend of 2 cents a share and an extra dividend of 20 cents a share on the company's common stock.

The wage dividend will be paid on Friday, March 23, 1974, and the extra dividend is payable Jan. 15, 1974, to shareholders of record on Dec. 3, 1973.

The wage dividend will be approximately \$3,250,000 for about 1,800 people employed by Texas Eastern Company last year's wage dividend of \$12,300,000 and declared a quarterly cash dividend of 2 cents a share and an extra dividend of 20 cents a share on the company's common stock.

The wage dividend will be paid on Friday, March 23, 1974, and the extra dividend is payable Jan. 15, 1974, to shareholders of record on Dec. 3, 1973.

The wage dividend will be approximately \$3,250,000 for about 1,800 people employed by Texas Eastern Company last year's wage dividend of \$12,300,000 and declared a quarterly cash dividend of 2 cents a share and an extra dividend of 20 cents a share on the company's common stock.

The wage dividend will be paid on Friday, March 23, 1974, and the extra dividend is payable Jan. 15, 1974, to shareholders of record on Dec. 3, 1973.

The wage dividend will be approximately \$3,250,000 for about 1,800 people employed by Texas Eastern Company last year's wage dividend of \$12,300,000 and declared a quarterly cash dividend of 2 cents a share and an extra dividend of 20 cents a share on the company's common stock.

The wage dividend will be paid on Friday, March 23, 1974, and the extra dividend is payable Jan. 15, 1974, to shareholders of record on Dec. 3, 1973.

The wage dividend will be approximately \$3,250,000 for about 1,800 people employed by Texas Eastern Company last year's wage dividend of \$12,300,000 and declared a quarterly cash dividend of 2 cents a share and an extra dividend of 20 cents a share on the company's common stock.

The wage dividend will be paid on Friday, March 23, 1974, and the extra dividend is payable Jan. 15, 1974, to shareholders of record on Dec. 3, 1973.

The wage dividend will be approximately \$3,250,000 for about 1,800 people employed by Texas Eastern Company last year's wage dividend of \$12,300,000 and declared a quarterly cash dividend of 2 cents a share and an extra dividend of 20 cents a share on the company's common stock.

The wage dividend will be paid on Friday, March 23, 1974, and the extra dividend is payable Jan. 15, 1974, to shareholders of record on Dec. 3, 1973.

## Gladewater Shows Off New Library

GLADWATER — The city moved its public library into brand new headquarters this week which — for once — has plenty of room.

"We never had an occasion to break work from before," Mrs. Bob McQuinn, assistant librarian, said Wednesday at her home made a sweeping motion of the book building's interior.

"Now, we've got plenty of room in which to work in the public library," she said.

Mrs. McQuinn and her assistant, Mrs. Betty Joe Leach and Miss Teresa Campbell, were the hosts of 2000 visitors Wednesday.

WASHINGTON (UPI)—Cabinet-level energy aid talks between President Nixon and Secretary of State Henry Kissinger are expected to be a major step toward peace in the Middle East, where more than 900 people have died in four years of sectarian strife.

WASHINGTON (UPI)—The nation will start running short of power plant fuel by December, housing of fuel shortages and gasoline by early February, Interior Secretary Rogers C. M. Cooke said Wednesday.

WASHINGTON (UPI)—Cabinet-level energy aid talks between President Nixon and Secretary of State Henry Kissinger are expected to be a major step toward peace in the Middle East, where more than 900 people have died in four years of sectarian strife.

WASHINGTON (UPI)—The nation will start running short of power plant fuel by December, housing of fuel shortages and gasoline by early February, Interior Secretary Rogers C. M. Cooke said Wednesday.

WASHINGTON (UPI)—Cabinet-level energy aid talks between President Nixon and Secretary of State Henry Kissinger are expected to be a major step toward peace in the Middle East, where more than 900 people have died in four years of sectarian strife.

WASHINGTON (UPI)—The nation will start running short of power plant fuel by December, housing of fuel shortages and gasoline by early February, Interior Secretary Rogers C. M. Cooke said Wednesday.

WASHINGTON (UPI)—Cabinet-level energy aid talks between President Nixon and Secretary of State Henry Kissinger are expected to be a major step toward peace in the Middle East, where more than 900 people have died in four years of sectarian strife.

WASHINGTON (UPI)—The nation will start running short of power plant fuel by December, housing of fuel shortages and gasoline by early February, Interior Secretary Rogers C. M. Cooke said Wednesday.

WASHINGTON (UPI)—Cabinet-level energy aid talks between President Nixon and Secretary of State Henry Kissinger are expected to be a major step toward peace in the Middle East, where more than 900 people have died in four years of sectarian strife.

WASHINGTON (UPI)—The nation will start running short of power plant fuel by December, housing of fuel shortages and gasoline by early February, Interior Secretary Rogers C. M. Cooke said Wednesday.

WASHINGTON (UPI)—Cabinet-level energy aid talks between President Nixon and Secretary of State Henry Kissinger are expected to be a major step toward peace in the Middle East, where more than 900 people have died in four years of sectarian strife.

WASHINGTON (UPI)—The nation will start running short of power plant fuel by December, housing of fuel shortages and gasoline by early February, Interior Secretary Rogers C. M. Cooke said Wednesday.

WASHINGTON (UPI)—Cabinet-level energy aid talks between President Nixon and Secretary of State Henry Kissinger are expected to be a major step toward peace in the Middle East, where more than 900 people have died in four years of sectarian strife.

WASHINGTON (UPI)—The nation will start running short of power plant fuel by December, housing of fuel shortages and gasoline by early February, Interior Secretary Rogers C. M. Cooke said Wednesday.

WASHINGTON (UPI)—Cabinet-level energy aid talks between President Nixon and Secretary of State Henry Kissinger are expected to be a major step toward peace in the Middle East, where more than 900 people have died in four years of sectarian strife.

## Judge Rules Funds Illegal

WASHINGTON (UPI)—A federal judge Wednesday ruled that President Nixon's appointment of some \$30 million of federal education funds was unconstitutional.

U.S. District Judge Joseph C. Waddy issued the ruling in a summary judgment on a class action suit brought by Pennsylvania.

Waddy ordered Secretary of Education Joseph P. Kamp to return the \$30 million to the federal treasury and to issue orders to the states to return the money to the federal treasury.

The suit involved money appropriated by Nixon for fiscal 1973 under the Elementary and Secondary Education Act, the Vocational Education Act, and the Adult Education Act.

Pennsylvania had sought to obtain \$10 million which it said the government used to fund a local order under the law. Waddy said he found no grounds for the suit.

The suit involved money appropriated by Nixon for fiscal 1973 under the Elementary and Secondary Education Act, the Vocational Education Act, and the Adult Education Act.

Pennsylvania had sought to obtain \$10 million which it said the government used to fund a local order under the law. Waddy said he found no grounds for the suit.

The suit involved money appropriated by Nixon for fiscal 1973 under the Elementary and Secondary Education Act, the Vocational Education Act, and the Adult Education Act.

Pennsylvania had sought to obtain \$10 million which it said the government used to fund a local order under the law. Waddy said he found no grounds for the suit.

The suit involved money appropriated by Nixon for fiscal 1973 under the Elementary and Secondary Education Act, the Vocational Education Act, and the Adult Education Act.

Pennsylvania had sought to obtain \$10 million which it said the government used to fund a local order under the law. Waddy said he found no grounds for the suit.

The suit involved money appropriated by Nixon for fiscal 1973 under the Elementary and Secondary Education Act, the Vocational Education Act, and the Adult Education Act.

Pennsylvania had sought to obtain \$10 million which it said the government used to fund a local order under the law. Waddy said he found no grounds for the suit.

The suit involved money appropriated by Nixon for fiscal 1973 under the Elementary and Secondary Education Act, the Vocational Education Act, and the Adult Education Act.

Pennsylvania had sought to obtain \$10 million which it said the government used to fund a local order under the law. Waddy said he found no grounds for the suit.

##