

# AGENTS CONTINUE BOMBING

## Fireman On L.-A. Beaten by Women Sympathizers Of Strike

MINDEN, La., Nov. 10 (UP)—H. E. Cole, engineer, and C. H. Walters, fireman, strikebreaking trainmen of the Louisiana and Arkansas railway, were beaten with sticks last night by a score of women strike sympathizers.

Five hundred L. & A. trainmen have been on strike for two months demanding increased wages.

"They took the beating about as casually as it was given," Sheriff O. H. Haynes. "I went down to the railroad yards and those fellows had been beaten all right but they didn't seem worried. They weren't badly hurt. They went back to work."

It was too dark for the trainmen to identify their assailants, the sheriff said, and he did not expect to make any arrests.

Since the strike started three trainmen have been killed in wrecks, caused by tampering with switches and bridge burnings, at the start of the strike a group of women sympathizers stopped a passenger train and beat the crew.

## FEDERAL OFFICER SEES STRIKE END

### Hopes For New Meetings With Strikers And Shipowners In Effort To Sign Pact

SAN FRANCISCO, Nov. 10. (AP)—Edward F. McGrady, Federal Conciliator, was confident today he could bring shipowners and union leaders together in a renewal of conferences looking toward settlement of the paralyzing West Coast maritime strike.

He planned to meet with the groups individually and induce them to resume deliberations if they refused to attend yesterday.

McGrady, Assistant Secretary of Labor, worked without formal consent of either side in proposing the meeting of shipowners and union leaders who have forced 178 ships into idleness on the Pacific Coast.

It was optimistic because:

1. Attorney General Homer S. Cummings directed postponement of a federal court order at San Pedro giving a United States Marshal authority to unload a cargo of bananas.

2. No attempts had been made at San Francisco, Seattle or Portland to unload perishables although strike committees there had given permission, thus averting possible trouble.

3. Unions announced willingness for the Honolulu strike committee to clear American-bound ships which were halted when the walkout was called Oct. 20.

## TO DECIDE DERBY



Justice W. E. Middleton of the Ontario, Canada, Supreme Court, named to determine the legality of the Millar will and perhaps declare the winner of the Derby.

## KILGORE COLLEGE IN NEW BUILDING

### Structure Formally Accepted by Officials; Equipment Is Not Ready For Installation

Kilgore College was operating today on a well organized system, with plenty of space and time for everybody, for the first time since it opened a year and a half ago.

The college—student body and all—moved into the new administration building Monday after it had been completed and formally accepted by architects and school officials.

It will be several days yet before Dean B. E. Masters and his staff complete all their plans, and it will be some two months before all of the equipment arrives and is installed. But the 330 students will get along splendidly. Dean

## MERCHANTS VOTE FULL OBSERVANCE FOR NOVEMBER 11

### Stores To Close During Day; Elaborate Plans Are Made By Legion To Hold Parade And Services at Park

Kilgore citizens had completed their plans today to observe Armistice Day Wednesday with a full holiday and by taking part in elaborate ceremonies prepared by the Robert Lee Crim No. 280 of the American Legion.

Merchants and business men, meeting this morning with Manager Barney Haygood of the Chamber of Commerce, voted unanimously to close their stores for the day, permitting their employes to take part in the holiday events.

Haygood said all stores, dry goods, groceries, and others, were represented at the meeting.

Legionnaires will hold their annual "Pilgrimage to the Tomb of the Unknown Soldier" Wednesday morning, beginning with a parade at 10 a. m. Myron G. Bullock of Marshall will be the principal speaker at the city park.

In the parade will be students of Kilgore, Sabine and Leverett's Chapel schools, bands, Boy Scouts, floats, ex-soldiers, and various

See ARMISTICE, Page 3

## WAYS TO SELECT OFFICIAL DIFFER

### Board Of Education Chairman Thinks State School Chief Should Be Appointed

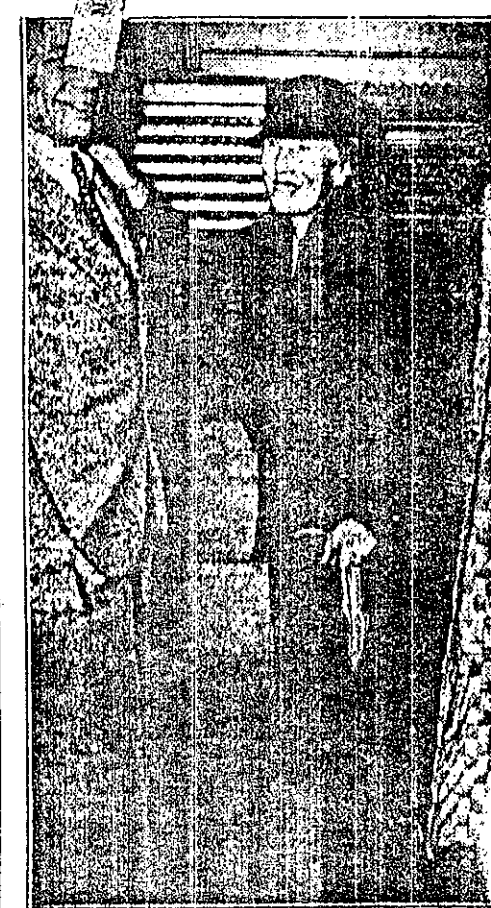
AUSTIN, Nov. 10. (UP)—Directly opposite views on how a state school superintendent should be selected were before a state senate committee meeting here today to consider advisable law changes.

State School Superintendent L. A. Woods told the committee yesterday the superintendent should be elected. His campaign makes him familiar with conditions and needs of all parts of the state, Woods said.

H. F. Tisinger, Garland, president of the State Board of Education, today told the senate committee the superintendent should be appointed. If he is elected he cannot face facts as they should be faced, Tisinger said.

Tisinger suggested that the superintendent be appointed by the governor from a list of nominees submitted by the State Board of Education. The governor's appointee then should be subject to senate confirmation, Tisinger thought.

## R.'S WIDOW GOES TO CAST HE



Mrs. Theodora Roosevelt, widow of a former President, as she voted in the national election. Left, Sagamore Hill, Oyster Bay, N. Y., she was escorted by her son, Colonel Theodore Roosevelt, left. The election covering from a fall she suffered at her home, was fractured.

## Social Security Tax Expected To Bulwark Against Future Dep

WASHINGTON, Nov. 10. (UP)—Billions of dollars—supplying the U. S. with the greatest hoard of ready cash in history—will be used to build a bulwark against future depressions, government officials today said.

Use of revenue from the joint employer-employee old age pension tax to gain those ends, they predicted, would cause the fund to operate as a permanent stabilization force for all phases of American business.

The levy, estimated to pile up \$10,000,000,000 by 1948 and \$45,000,000,000 by 1975, would accomplish its double-barreled purpose, according to the officials, by these means:

Rival For  
Contest On

HOLLYWOOD  
A rival for the ball game, a day fixture possibility with the back



ident Roosevelt, showing fatigue from the strain of arduous pain, finds delight in his small granddaughter, Kate Elizabeth Roosevelt, after her christening at Hyde Park, N. Y. The baby, Feb. 16, this year, is the daughter of the President's oldest James, and his wife, the former Betsy Cushing of Boston.

## Show Boat' On Screen At Ritz

comes the "Show Boat" with the morose romance and drama in Ferber's novel... with a stirring melody and rhythm some Kern's music. "Show Boat" with the charming glamour and appeal of Oscar Hammerstein's play. The 1936 film version comes to the theatre today.

picture tells the love story of Molly and Ravenal on a Mississippi show boat. Irene Dunne, and Allan Jones capture imagination in these romantic roles. Charles Winninger as Captain Andy, genial river man. His straightlaced wife played by Helen Westley.

"Show Boat" is filled with music and heart throbs. The story of Helen Morgan, as Julie, several delightful songs. Paul Robeson, noted baritone, gives resonance and robust life to his role with a chorus of 200 singers singing magnificent musical effects in the background. A cast of 60 people gives reality and life to the production.

Includes the surefire songs that are inseparable from "Show Boat" there are three new songs by Kern-Oscar Hammerstein

## ARMISTICE

Continued from Page One

of the Legion and affiliated organizations.

A parade will form at the school, pass through town and end at the city park where a public has been invited to take part in activities. Besides Mallock's talk, other will appear on the program for brief and reading.

In the afternoon, Legion will lead a delegation of people to Gladewater to watch the Kilgore-Gladewater School football game.

On Tuesday night, the Legion will conclude its holiday events with its annual Armistice Ball at

## ANSWER

Continued from Page One

of Kilgore were in the radio broadcasting studio at Dallas this morning and were recognized.

College students held their Armistice dance tonight at their gym, and Legion post members entertained. Wednesday night with their annual Armistice ball. Famous quotations: "I don't believe I'll drink any coffee for lunch; it will keep me awake all afternoon." - Fat Adams.

## SNIPERS

Continued from Page One

opposite the center of the city, across the Manzanares River.

A United Press correspondent made his way at 12:15 p. m. to Sagueta bridge which crosses the river beyond Puerta Del Sol and the Cathedral and Royal Palace. It was in government hands, as was Puerta Del Angel, up the road.

There was no fight there but the constant crackle of machine gun and rifle fire could be heard from the Casa Del Campo, across the river.

Copyright, 1936, By United Press MADRID, Nov. 10. (UP)—A new Foreign Legion made up of French, German and Russian anti-Fascists took the field today to help the Loyalists hold back the Nationalists.

The Loyalist lines held fast and the populace maintained its spirit despite the deadly rain of airplane bombs and artillery shells throughout the city.

Gen. Jose Miaja, president of the emergency defense committee, signed a drastic decree to end the sniping tactics of the "fifth column" of Nationalists—the Fascist sympathizers who have been ordered cover here ever since the civil war began and on recent nights have tried to add to confusion by firing from rooftops.

Miaja gave all citizens until midnight tonight to surrender arms to police. After that, any private individuals who bear arms will be considered Rebels and will

public today by Chairman Jesse H. Jones.

Regional agricultural credit corporations received a total disbursement from the RFC of \$173,243,640.72 and repaid the entire loan to the RFC by the end of October.

Livestock credit corporations received in loans a total of \$13,101,598.69 of which \$12,337,619.34 had been repaid by the end of October.

Agricultural credit corporations, not of a regional nature, received \$5,502,890.94 and had repaid all but \$745,979.35.

Loans totaling \$20,224,500.00 were made to aid in financing the sale of agricultural surpluses in foreign markets, with repayments on the loan amounting to \$20,177,090.07.

Loans to finance the carrying and orderly marketing of agricultural commodities and livestock were made to commodity credit corporations with specific disbursements for cotton, corn, turpentine, tobacco and miscellaneous commodity units. Cotton received \$454,416,480.74 and repaid \$375,035,298.55.

Loans to farmers through the Land Bank Commission reached 145 million dollars and showed no repayment. The Federal Farm Mortgage Corporation had disbursed to farmers loans totaling 55 million dollars on which there had been no repayments.

Mr. Jones also listed \$623,519,795 authorized disbursements for Railroad Companies of which \$515,266,239 had been paid out, \$106,303,556 cancelled or withdrawn, and \$101,450,262 repaid.

## COLLEGE

Continued from Page One

Master said, until everything is worked out.

Classes were held in the gymnasium and in the Church of Christ before the structure was completed.

The new building lacks nothing in the way of modern conveniences. It is attractive inside and out and is regarded as one of the city's largest and best buildings.

The first floor contains business and executive offices, teachers' offices, five class rooms, the business administration department rooms, a dramatic arts auditorium with stage equipment, a large library and reading room, two rest rooms and other rooms.

The top and second story contain science laboratories, class rooms and other rooms.

The gymnasium is built so it will serve both as an auditorium and gym.

Concrete walks will be poured around the building during the next few days, and the grounds will be cleared of shrubbery and waste lumber.

Dean Master indicated that the building would be formally opened to the public as soon as equipment is installed.

September and of four from October, 1935.

Retail sales for Texas, reflected by reports from 1,055 independent stores in Texas, Oklahoma and New Mexico, increased more than 20 per cent per dollar volume in September this year as compared to September a year ago.

The 700 Texas merchants, by themselves showed a 21 per cent gain above September a year ago.

## SATIRICAL CRACK AT FDR'S WIFE IS CUT FROM PROGRAM

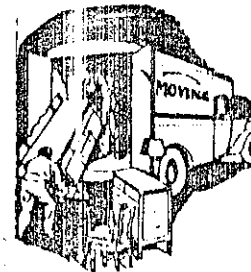
PHILADELPHIA, Nov. 10. (UP)—A satirical "blackout" in the revue "New Faces," depicting Mrs. Franklin D. Roosevelt urging motherhood on Girl Scouts, was ordered deleted today by Mayor S. Davis Wilson.

The mayor interrupted the opening performance last night when he stormed from his aisle seat in the third row to the office of the manager.

"It's the most damnable outrage I have ever witnessed—ridiculing like this the wife of the President of the United States," the mayor shouted at Lawrence Schubert Lawrence, lessee of the building. "Take that skit out of the show or I'll close it," he said.

Mrs. Dee Frost and Mrs. Pansy Phipps spent the week-end in Dallas visiting with friends.

PHONE 818



## MOVING?

Don't worry about a thing! We take all the responsibility from you, and charge you lowest prices.

LOCAL & LONG

DISTANCE MOVING

OIL FIELD TRUCKING

A. W. DUNN

TRANSFER CO.

PHONE 818



WE MAKE Modernizing EASY

Let one of our expert estimators call at your home and give you suggestions and an estimate on the building you plan to do. We have a plan for financing, too. Call 4 today. "EVERYTHING FOR THE BUILDER"

Miller came to Drumright, Okla., 12 years ago, while in Kilgore since the oil boom started.

"We think Kilgore to make a healthy proposal to stay at the town," Miller's business has become specialized in the fast serving of savory food at a price that is not the merit to win favor.

## SOCIETY

Continued from Page One

power among the income classes by its 600 workers against providing unemployment benefits to needy.

The old age pension into the treasury since 1, 1937, when a 2 per cent payroll tax on employers and their comes effective. The gradually increased



In review to tonight and special attention

Say it with WEHRL'S FL Towers Day & Night P Henderson Ill



Since you'll welcome about the TURKEY

"The Only" Grege

St. Nea

# In Tests Of Madaras Steel



A FRIEND OF ours who has found a nice balance of living with an urban occupation against a rustic home is having a lot of grief with the telephone company. Everyone knows how it is. These sylvan retreats make for fine living, but every once in a while up pops utility trouble. If it isn't the gas, it's the water, and if it isn't the water, it's the telephone company.

It seems that our friend's telephone suddenly became a one-way matter. He could call into town and find out what was going on in the great world about him. But his friends couldn't call him. The darn phone just wouldn't work that way.

Well, for quite a spell he kept calling the telephone company, asking them to fix things up. Nothing happened. Then, just the other day, there came an epistle from the phone folks. Would our friend please come in and pay his bill? It was impossible to call him about it, for there seemed to be a slight difficulty in the line.

Our friend was hauled to a nice deep town.

THE POSTMAN brought us a card from Martha Sue Frazier yesterday. Martha Sue, you know was inventor of our Society Department and left to return to Denton and to the Texas State College for Women. Now, getting a card from Martha Sue, we thought, was a grand honor. Folks leaving a newspaper job are like youngsters leaving home for the first time. "Yes, yes, I'll write," they all say. But somehow they never do.

So when the card came from Martha Sue yesterday it packed a wallop. Here was a newspaper girl that remembered. So we took a quick around . . . and everyone in the office was reading postcards from Martha Sue.

THOSE SUCULENT baylees from the Bayans are back in season. Banned, fried, stewed, or just plain raw, oysters are back with the first fall month with an "H." Which reminds us. We'd have missed that story if H. N. Judy, of the Fulton Fish Market, hadn't reminded us.

SAN MARINO is still at war, but has changed her allegiance. San Marino, as most of us didn't know, is a small republic in Central Italy.

Long years ago, San Marino, true to Italy, declared war on German. A state of war between the tiny republic and the Reich has existed ever since. For the pavers that made the treaty at Versailles forgot all about little San Marino.

Today, after twenty-five years of continuous state of war with the Germans, San Marino has

visioning a "new" East Texas, humming with a new industry. Liggett N. Crim returned to Kilgore today beaming over witnessing the highly successful test runs of East Texas iron ore this week in Niagara Falls, N. Y.

Carrying back the message that men high in metallurgical engineering and big business were "beamed away" with the successful tests, Mr. Crim said that the new process which will reduce the iron ore by means of natural gas will be recommended to the stockholders of the Madaras Steel Corp., of Texas. It is his belief that the selection of a site in East Texas for the first unit will be begun by some of the nation's first class engineers soon.

"While each and every town in East Texas will bid for the first plant," Mr. Crim said, "it is not something to fight over because the whole of East Texas will be involved in the new industry before it is all over."

The location of the plant will be decided by the engineers, based on economic factors for the success of the plant," he said further.

James D. Madaras, Detroit engineer and inventor of the process, found the tests in Niagara See L. H. CRIM page 2.

## HOUSE VOTES SHELTER FUND FOR DRAFTEES

WASHINGTON, Sept. 10 (UP) — The House today passed and sent to the Senate a bill appropriating \$330,000,000 for housing of the conscript army soon to be called up.

The housing fund was part of a \$1,200,000,000 new defense request submitted to Congress by President Roosevelt last Saturday. The House appropriations committee made the housing item a separate bill instead of waiting to formulate the entire new appropriation.

Rep. Clifton Woodrum, D., Va., informed the House this would save a week's time in preparation for housing conscripts. Out of the 10,500,000 men who must register for the draft on Oct. 16, about 400,000 are expected to be inducted into the army between Nov. 15 and Jan. 1.

The resolution approved today carried \$329,010,000 for construction of buildings, utilities, flying fields and other appurtenances, and \$8,000,000 for purchase of land for encampments.

Rep. Clarence Cannon, D., Mo., urged approval of the bill and said the people would hold Congress "strictly accountable" if it refused to provide housing after voting conscription.

The House defeated an amendment offered by Rep. Clara Hoffman, R., Mich., which would have frozen at present levels the costs of materials to be used in the housing. "We should take this step to prevent any possible profiteering," Hoffman said. Woodrum termed the amendment "un-

## 'BEAUTIFUL' SAYS FIDLER OF KILGORE GIRL

By MACK ROBERTSON  
FORT WORTH, Sept. 10. Fort Worth went movie mad today as a huge troupe of Hollywood luminaries accompanied "The Westerner" into town for its premier.

But while Fort Worth went for the stars, at least one of the movie capital's colubs went for Kilgore's own typically Texas girl, Darline Wise, in a big way.

"She's beautiful," said Jimmy Fidler, whose scribbings of the romances and goings-on of the stars makes Hollywood history.

And Darline said: "I've never been more flattered in my life."

But Kilgore's sweetheart was not talking of the impressed scribble. Her eyes were stony, and were directed upon Gary Cooper, head man in "The Westerner."

Wearing a blue suede cowpat suit, with white silk blouse and colorful necktie, Darline today won a grand honor. She posed for photographs with Lilian Bond, who plays Lily Langtry, the famed Jersey Lily, for whom old Judge Roy Bean named a town in Texas, and from which he dispensed the law west of the Pecos.

Mr. Fidler not only met up with the glamorous Gary Cooper, she chatted with him for several minutes. All this was after See PREMIER page 2.

## COLLEGE ENROLLS 553 STUDENTS

Kilgore Junior College, probably the fastest growing institution of its kind in the world, now has 553 students enrolled already and expects 50 or 50 more before the week of registration is over.

Dean H. E. Masters said today that this is the greatest enrollment in the history of the school. Doubling of a powerful football team and one of the finest circledums in the state, Kilgore Junior College is fast becoming outstanding for its fine achievements. It is now offering a special course in petroleum engineering for the working class of people who are interested in the oil industry.

With a fine building and campus, also one of the best libraries in junior college circles, it is drawing more students every year. Students who formerly took their first and second years in senior colleges are now enrolling in Kilgore Junior College.

Starting out with only a few students, and having their classes in the high school and in the church, it has grown to such an extent that two new buildings had to be erected to house the students, with only one improvement yet to be made, that is offering boarding students a place to stay.

BY JOE ALEX MORRIS,  
United Press Foreign News Editor

Lone German war planes dodged through low but almost continual attacks on Great Britain today, counter-attack by British naval and air forces on chine from Germany to North Africa.

Damage to London was admittedly vast in the many stores and government buildings among the aged structures in the center of the capital.

Night-time raiders caused greatest destruction using a new type bomb that exploded with come throughout the day the Nazi war planes continue to strike and run away.

Of perhaps greater importance, however, were the British counter-blow against Italy and Germany, including raids on the Reich which Nazi said had wrecked a children's hospital and would result in unrestricted "punitive" aerial warfare against Britain in retaliation. British sources took the threat calmly on the grounds that the Nazis already were dropping all they could against the British Isles.

The British believed Allied ever Axis plan on at Rome by later Joachim v. Premier Benito were reported portentous territorial questions — Italian anger to the Balkans.

The Axis policy at sensation One guess was come into the side or possibly See AIR RAIDS

The British Navy went into action with a bombardment along the Mediterranean coastal road leading to Sallum and Sid Barrani against Italian forces driving some 25 miles into Egypt.

The British Air Force also bombarded Italian bases and concentrated in the Egyptian Libyan frontier area, in the Dodecanese Islands off Turkey, and all the way from the Sudan to Somalia.

## PLAN APPROVED TO ALLOW H DEFENSE TO SUPPLANT GUARD

WASHINGTON, Sept. 10 (UP) — The Senate and House Military Affairs Committees today approved legislation authorizing the state to create home defense units to supplant national guard units ordered into active federal service.

The War Department meanwhile announced that Nov. 18 and Nov. 25 have been set tentatively for induction of the third and fourth increments of the national guard into active service.

The dates were contingent upon completion of adequate shelter. On Nov. 18, the Department plans to order into federal service the 50th Cavalry Brigade of Texas with an approximate strength of 1,377 officers and men.

On Nov. 25, units from 16 states with approximately 35,565 officers and men will be ordered into service.

The Texas cavalry brigade will be stationed at Fort Bliss, Texas, until Feb. 1, 1941, when it will probably be moved to the border to take over garrisons now occupied by units of the First Cavalry Division.

First national was ordered into day; the second Oct. 15.

Units scheduled on Nov. 25 include 31st Division (Co.) from Florida; 35th Division (Co.) from Nebraska; 38th Division (Co.) from Texas; 110th Observation from Missouri; 111th Observation from Texas; 153rd Infantry to Camp Robinson; 120th Field Artillery; 121st Field Artillery; 122nd Field Artillery; 123rd Field Artillery; 124th Field Artillery; 125th Field Artillery; 126th Field Artillery; 127th Field Artillery; 128th Field Artillery; 129th Field Artillery; 130th Field Artillery; 131st Field Artillery; 132nd Field Artillery; 133rd Field Artillery; 134th Field Artillery; 135th Field Artillery; 136th Field Artillery; 137th Field Artillery; 138th Field Artillery; 139th Field Artillery; 140th Field Artillery; 141st Field Artillery; 142nd Field Artillery; 143rd Field Artillery; 144th Field Artillery; 145th Field Artillery; 146th Field Artillery; 147th Field Artillery; 148th Field Artillery; 149th Field Artillery; 150th Field Artillery; 151st Field Artillery; 152nd Field Artillery; 153rd Field Artillery; 154th Field Artillery; 155th Field Artillery; 156th Field Artillery; 157th Field Artillery; 158th Field Artillery; 159th Field Artillery; 160th Field Artillery; 161st Field Artillery; 162nd Field Artillery; 163rd Field Artillery; 164th Field Artillery; 165th Field Artillery; 166th Field Artillery; 167th Field Artillery; 168th Field Artillery; 169th Field Artillery; 170th Field Artillery; 171st Field Artillery; 172nd Field Artillery; 173rd Field Artillery; 174th Field Artillery; 175th Field Artillery; 176th Field Artillery; 177th Field Artillery; 178th Field Artillery; 179th Field Artillery; 180th Field Artillery; 181st Field Artillery; 182nd Field Artillery; 183rd Field Artillery; 184th Field Artillery; 185th Field Artillery; 186th Field Artillery; 187th Field Artillery; 188th Field Artillery; 189th Field Artillery; 190th Field Artillery; 191st Field Artillery; 192nd Field Artillery; 193rd Field Artillery; 194th Field Artillery; 195th Field Artillery; 196th Field Artillery; 197th Field Artillery; 198th Field Artillery; 199th Field Artillery; 200th Field Artillery; 201st Field Artillery; 202nd Field Artillery; 203rd Field Artillery; 204th Field Artillery; 205th Field Artillery; 206th Field Artillery; 207th Field Artillery; 208th Field Artillery; 209th Field Artillery; 210th Field Artillery; 211th Field Artillery; 212th Field Artillery; 213th Field Artillery; 214th Field Artillery; 215th Field Artillery; 216th Field Artillery; 217th Field Artillery; 218th Field Artillery; 219th Field Artillery; 220th Field Artillery; 221st Field Artillery; 222nd Field Artillery; 223rd Field Artillery; 224th Field Artillery; 225th Field Artillery; 226th Field Artillery; 227th Field Artillery; 228th Field Artillery; 229th Field Artillery; 230th Field Artillery; 231st Field Artillery; 232nd Field Artillery; 233rd Field Artillery; 234th Field Artillery; 235th Field Artillery; 236th Field Artillery; 237th Field Artillery; 238th Field Artillery; 239th Field Artillery; 240th Field Artillery; 241st Field Artillery; 242nd Field Artillery; 243rd Field Artillery; 244th Field Artillery; 245th Field Artillery; 246th Field Artillery; 247th Field Artillery; 248th Field Artillery; 249th Field Artillery; 250th Field Artillery; 251st Field Artillery; 252nd Field Artillery; 253rd Field Artillery; 254th Field Artillery; 255th Field Artillery; 256th Field Artillery; 257th Field Artillery; 258th Field Artillery; 259th Field Artillery; 260th Field Artillery; 261st Field Artillery; 262nd Field Artillery; 263rd Field Artillery; 264th Field Artillery; 265th Field Artillery; 266th Field Artillery; 267th Field Artillery; 268th Field Artillery; 269th Field Artillery; 270th Field Artillery; 271st Field Artillery; 272nd Field Artillery; 273rd Field Artillery; 274th Field Artillery; 275th Field Artillery; 276th Field Artillery; 277th Field Artillery; 278th Field Artillery; 279th Field Artillery; 280th Field Artillery; 281st Field Artillery; 282nd Field Artillery; 283rd Field Artillery; 284th Field Artillery; 285th Field Artillery; 286th Field Artillery; 287th Field Artillery; 288th Field Artillery; 289th Field Artillery; 290th Field Artillery; 291st Field Artillery; 292nd Field Artillery; 293rd Field Artillery; 294th Field Artillery; 295th Field Artillery; 296th Field Artillery; 297th Field Artillery; 298th Field Artillery; 299th Field Artillery; 300th Field Artillery; 301st Field Artillery; 302nd Field Artillery; 303rd Field Artillery; 304th Field Artillery; 305th Field Artillery; 306th Field Artillery; 307th Field Artillery; 308th Field Artillery; 309th Field Artillery; 310th Field Artillery; 311th Field Artillery; 312th Field Artillery; 313th Field Artillery; 314th Field Artillery; 315th Field Artillery; 316th Field Artillery; 317th Field Artillery; 318th Field Artillery; 319th Field Artillery; 320th Field Artillery; 321st Field Artillery; 322nd Field Artillery; 323rd Field Artillery; 324th Field Artillery; 325th Field Artillery; 326th Field Artillery; 327th Field Artillery; 328th Field Artillery; 329th Field Artillery; 330th Field Artillery; 331st Field Artillery; 332nd Field Artillery; 333rd Field Artillery; 334th Field Artillery; 335th Field Artillery; 336th Field Artillery; 337th Field Artillery; 338th Field Artillery; 339th Field Artillery; 340th Field Artillery; 341st Field Artillery; 342nd Field Artillery; 343rd Field Artillery; 344th Field Artillery; 345th Field Artillery; 346th Field Artillery; 347th Field Artillery; 348th Field Artillery; 349th Field Artillery; 350th Field Artillery; 351st Field Artillery; 352nd Field Artillery; 353rd Field Artillery; 354th Field Artillery; 355th Field Artillery; 356th Field Artillery; 357th Field Artillery; 358th Field Artillery; 359th Field Artillery; 360th Field Artillery; 361st Field Artillery; 362nd Field Artillery; 363rd Field Artillery; 364th Field Artillery; 365th Field Artillery; 366th Field Artillery; 367th Field Artillery; 368th Field Artillery; 369th Field Artillery; 370th Field Artillery; 371st Field Artillery; 372nd Field Artillery; 373rd Field Artillery; 374th Field Artillery; 375th Field Artillery; 376th Field Artillery; 377th Field Artillery; 378th Field Artillery; 379th Field Artillery; 380th Field Artillery; 381st Field Artillery; 382nd Field Artillery; 383rd Field Artillery; 384th Field Artillery; 385th Field Artillery; 386th Field Artillery; 387th Field Artillery; 388th Field Artillery; 389th Field Artillery; 390th Field Artillery; 391st Field Artillery; 392nd Field Artillery; 393rd Field Artillery; 394th Field Artillery; 395th Field Artillery; 396th Field Artillery; 397th Field Artillery; 398th Field Artillery; 399th Field Artillery; 400th Field Artillery; 401st Field Artillery; 402nd Field Artillery; 403rd Field Artillery; 404th Field Artillery; 405th Field Artillery; 406th Field Artillery; 407th Field Artillery; 408th Field Artillery; 409th Field Artillery; 410th Field Artillery; 411th Field Artillery; 412th Field Artillery; 413th Field Artillery; 414th Field Artillery; 415th Field Artillery; 416th Field Artillery; 417th Field Artillery; 418th Field Artillery; 419th Field Artillery; 420th Field Artillery; 421st Field Artillery; 422nd Field Artillery; 423rd Field Artillery; 424th Field Artillery; 425th Field Artillery; 426th Field Artillery; 427th Field Artillery; 428th Field Artillery; 429th Field Artillery; 430th Field Artillery; 431st Field Artillery; 432nd Field Artillery; 433rd Field Artillery; 434th Field Artillery; 435th Field Artillery; 436th Field Artillery; 437th Field Artillery; 438th Field Artillery; 439th Field Artillery; 440th Field Artillery; 441st Field Artillery; 442nd Field Artillery; 443rd Field Artillery; 444th Field Artillery; 445th Field Artillery; 446th Field Artillery; 447th Field Artillery; 448th Field Artillery; 449th Field Artillery; 450th Field Artillery; 451st Field Artillery; 452nd Field Artillery; 453rd Field Artillery; 454th Field Artillery; 455th Field Artillery; 456th Field Artillery; 457th Field Artillery; 458th Field Artillery; 459th Field Artillery; 460th Field Artillery; 461st Field Artillery; 462nd Field Artillery; 463rd Field Artillery; 464th Field Artillery; 465th Field Artillery; 466th Field Artillery; 467th Field Artillery; 468th Field Artillery; 469th Field Artillery; 470th Field Artillery; 471st Field Artillery; 472nd Field Artillery; 473rd Field Artillery; 474th Field Artillery; 475th Field Artillery; 476th Field Artillery; 477th Field Artillery; 478th Field Artillery; 479th Field Artillery; 480th Field Artillery; 481st Field Artillery; 482nd Field Artillery; 483rd Field Artillery; 484th Field Artillery; 485th Field Artillery; 486th Field Artillery; 487th Field Artillery; 488th Field Artillery; 489th Field Artillery; 490th Field Artillery; 491st Field Artillery; 492nd Field Artillery; 493rd Field Artillery; 494th Field Artillery; 495th Field Artillery; 496th Field Artillery; 497th Field Artillery; 498th Field Artillery; 499th Field Artillery; 500th Field Artillery; 501st Field Artillery; 502nd Field Artillery; 503rd Field Artillery; 504th Field Artillery; 505th Field Artillery; 506th Field Artillery; 507th Field Artillery; 508th Field Artillery; 509th Field Artillery; 510th Field Artillery; 511th Field Artillery; 512th Field Artillery; 513th Field Artillery; 514th Field Artillery; 515th Field Artillery; 516th Field Artillery; 517th Field Artillery; 518th Field Artillery; 519th Field Artillery; 520th Field Artillery; 521st Field Artillery; 522nd Field Artillery; 523rd Field Artillery; 524th Field Artillery; 525th Field Artillery; 526th Field Artillery; 527th Field Artillery; 528th Field Artillery; 529th Field Artillery; 530th Field Artillery; 531st Field Artillery; 532nd Field Artillery; 533rd Field Artillery; 534th Field Artillery; 535th Field Artillery; 536th Field Artillery; 537th Field Artillery; 538th Field Artillery; 539th Field Artillery; 540th Field Artillery; 541st Field Artillery; 542nd Field Artillery; 543rd Field Artillery; 544th Field Artillery; 545th Field Artillery; 546th Field Artillery; 547th Field Artillery; 548th Field Artillery; 549th Field Artillery; 550th Field Artillery; 551st Field Artillery; 552nd Field Artillery; 553rd Field Artillery; 554th Field Artillery; 555th Field Artillery; 556th Field Artillery; 557th Field Artillery; 558th Field Artillery; 559th Field Artillery; 560th Field Artillery; 561st Field Artillery; 562nd Field Artillery; 563rd Field Artillery; 564th Field Artillery; 565th Field Artillery; 566th Field Artillery; 567th Field Artillery; 568th Field Artillery; 569th Field Artillery; 570th Field Artillery; 571st Field Artillery; 572nd Field Artillery; 573rd Field Artillery; 574th Field Artillery; 575th Field Artillery; 576th Field Artillery; 577th Field Artillery; 578th Field Artillery; 579th Field Artillery; 580th Field Artillery; 581st Field Artillery; 582nd Field Artillery; 583rd Field Artillery; 584th Field Artillery; 585th Field Artillery; 586th Field Artillery; 587th Field Artillery; 588th Field Artillery; 589th Field Artillery; 590th Field Artillery; 591st Field Artillery; 592nd Field Artillery; 593rd Field Artillery; 594th Field Artillery; 595th Field Artillery; 596th Field Artillery; 597th Field Artillery; 598th Field Artillery; 599th Field Artillery; 600th Field Artillery; 601st Field Artillery; 602nd Field Artillery; 603rd Field Artillery; 604th Field Artillery; 605th Field Artillery; 606th Field Artillery; 607th Field Artillery; 608th Field Artillery; 609th Field Artillery; 610th Field Artillery; 611th Field Artillery; 612th Field Artillery; 613th Field Artillery; 614th Field Artillery; 615th Field Artillery; 616th Field Artillery; 617th Field Artillery; 618th Field Artillery; 619th Field Artillery; 620th Field Artillery; 621st Field Artillery; 622nd Field Artillery; 623rd Field Artillery; 624th Field Artillery; 625th Field Artillery; 626th Field Artillery; 627th Field Artillery; 628th Field Artillery; 629th Field Artillery; 630th Field Artillery; 631st Field Artillery; 632nd Field Artillery; 633rd Field Artillery; 634th Field Artillery; 635th Field Artillery; 636th Field Artillery; 637th Field Artillery; 638th Field Artillery; 639th Field Artillery; 640th Field Artillery; 641st Field Artillery; 642nd Field Artillery; 643rd Field Artillery; 644th Field Artillery; 645th Field Artillery; 646th Field Artillery; 647th Field Artillery; 648th Field Artillery; 649th Field Artillery; 650th Field Artillery; 651st Field Artillery; 652nd Field Artillery; 653rd Field Artillery; 654th Field Artillery; 655th Field Artillery; 656th Field Artillery; 657th Field Artillery; 658th Field Artillery; 659th Field Artillery; 660th Field Artillery; 661st Field Artillery; 662nd Field Artillery; 663rd Field Artillery; 664th Field Artillery; 665th Field Artillery; 666th Field Artillery; 667th Field Artillery; 668th Field Artillery; 669th Field Artillery; 670th Field Artillery; 671st Field Artillery; 672nd Field Artillery; 673rd Field Artillery; 674th Field Artillery; 675th Field Artillery; 676th Field Artillery; 677th Field Artillery; 678th Field Artillery; 679th Field Artillery; 680th Field Artillery; 681st Field Artillery; 682nd Field Artillery; 683rd Field Artillery; 684th Field Artillery; 685th Field Artillery; 686th Field Artillery; 687th Field Artillery; 688th Field Artillery; 689th Field Artillery; 690th Field Artillery; 691st Field Artillery; 692nd Field Artillery; 693rd Field Artillery; 694th Field Artillery; 695th Field Artillery; 696th Field Artillery; 697th Field Artillery; 698th Field Artillery; 699th Field Artillery; 700th Field Artillery; 701st Field Artillery; 702nd Field Artillery; 703rd Field Artillery; 704th Field Artillery; 705th Field Artillery; 706th Field Artillery; 707th Field Artillery; 708th Field Artillery; 709th Field Artillery; 710th Field Artillery; 711th Field Artillery; 712th Field Artillery; 713th Field Artillery; 714th Field Artillery; 715th Field Artillery; 716th Field Artillery; 717th Field Artillery; 718th Field Artillery; 719th Field Artillery; 720th Field Artillery; 721st Field Artillery; 722nd Field Artillery; 723rd Field Artillery; 724th Field Artillery; 725th Field Artillery; 726th Field Artillery; 727th Field Artillery; 728th Field Artillery; 729th Field Artillery; 730th Field Artillery; 731st Field Artillery; 732nd Field Artillery; 733rd Field Artillery; 734th Field Artillery; 735th Field Artillery; 736th Field Artillery; 737th Field Artillery; 738th Field Artillery; 739th Field Artillery; 740th Field Artillery; 741st Field Artillery; 742nd Field Artillery; 743rd Field Artillery; 744th Field Artillery; 745th Field Artillery; 746th Field Artillery; 747th Field Artillery; 748th Field Artillery; 749th Field Artillery; 750th Field Artillery; 751st Field Artillery; 752nd Field Artillery; 753rd Field Artillery; 754th Field Artillery; 755th Field Artillery; 756th Field Artillery; 757th Field Artillery; 758th Field Artillery; 759th Field Artillery; 760th Field Artillery; 761st Field Artillery; 762nd Field Artillery; 763rd Field Artillery; 764th Field Artillery; 765th Field Artillery; 766th Field Artillery; 767th Field Artillery; 768th Field Artillery; 769th Field Artillery; 770th Field Artillery; 771st Field Artillery; 772nd Field Artillery; 773rd Field Artillery; 774th Field Artillery; 775th Field Artillery; 776th Field Artillery; 777th Field Artillery; 778th Field Artillery; 779th Field Artillery; 780th Field Artillery; 781st Field Artillery; 782nd Field Artillery; 783rd Field Artillery; 784th Field Artillery; 785th Field Artillery; 786th Field Artillery; 787th Field Artillery; 788th Field Artillery; 789th Field Artillery; 790th Field Artillery; 791st Field Artillery; 792nd Field Artillery; 793rd Field Artillery; 794th Field Artillery; 795th Field Artillery; 796th Field Artillery; 797th Field Artillery; 798th Field Artillery; 799th Field Artillery; 800th Field Artillery; 801st Field Artillery; 802nd Field Artillery; 803rd Field Artillery; 804th Field Artillery; 805th Field Artillery; 806th Field Artillery; 807th Field Artillery; 808th Field Artillery; 809th Field Artillery; 810th Field Artillery; 811th Field Artillery; 812th Field Artillery; 813th Field Artillery; 814th Field Artillery; 815th Field Artillery; 816th Field Artillery; 817th Field Artillery; 818th Field Artillery; 819th Field Artillery; 820th Field Artillery; 821st Field Artillery; 822nd Field Artillery; 823rd Field Artillery; 824th Field Artillery; 825th Field Artillery; 826th Field Artillery; 827th Field Artillery; 828th Field Artillery; 829th Field Artillery; 830th Field Artillery; 831st Field Artillery; 832nd Field Artillery; 833rd Field Artillery; 834th Field Artillery; 835th Field Artillery; 836th Field Artillery; 837th Field Artillery; 838th Field Artillery; 839th Field Artillery; 840th Field Artillery; 841st Field Artillery; 842nd Field Artillery; 843rd Field Artillery; 844th Field Artillery; 845th Field Artillery; 846th Field Artillery; 847th Field Artillery; 848th Field Artillery; 849th Field Artillery; 850th Field Artillery; 851st Field Artillery; 852nd Field Artillery; 853rd Field Artillery; 854th Field Artillery; 855th Field Artillery; 856th Field Artillery; 857th Field Artillery; 858th Field Artillery; 859th Field Artillery; 860th Field Artillery; 861st Field Artillery; 862nd Field Artillery; 863rd Field Artillery; 864th Field Artillery; 865th Field Artillery; 866th Field Artillery; 867th Field Artillery; 868th Field Artillery; 869th Field Artillery; 870th Field Artillery; 871st Field Artillery; 872nd Field Artillery; 873rd Field Artillery; 874th Field Artillery; 875th Field Artillery; 876th Field Artillery; 877th Field Artillery; 878th Field Artillery; 879th Field Artillery; 880th Field Artillery; 881st Field Artillery; 882nd Field Artillery; 883rd Field Artillery; 884th Field Artillery; 885th Field Artillery; 886th Field Artillery; 887th Field Artillery; 888th Field Artillery; 889th Field Artillery; 890th Field Artillery; 891st Field Artillery; 892nd Field Artillery; 893rd Field Artillery; 894th Field Artillery; 895th Field Artillery; 896th Field Artillery; 897th Field Artillery; 898th Field Artillery; 899th Field Artillery; 900th Field Artillery; 901st Field Artillery; 902nd Field Artillery; 903rd Field Artillery; 904th Field Artillery; 905th Field Artillery; 906th Field Artillery; 907th Field Artillery; 908th Field Artillery; 909th Field Artillery; 910th Field Artillery; 911th Field Artillery; 912th Field Artillery; 913th Field Artillery; 914th Field Artillery; 915th Field Artillery; 916th Field Artillery; 917th Field Artillery; 918th Field Artillery; 919th Field Artillery; 920th Field Artillery; 921st Field Artillery; 922nd Field Artillery; 923rd Field Artillery; 924th Field Artillery; 925th Field Artillery; 926th Field Artillery; 927th Field Artillery; 928th Field Artillery; 929th Field Artillery; 930th Field Artillery; 931st Field Artillery; 932nd Field Artillery; 933rd Field Artillery; 934th Field Artillery; 935th Field Artillery; 936th Field Artillery; 937th Field Artillery; 938th Field Artillery; 939th Field Artillery; 940th Field Artillery; 941st Field Artillery; 942nd Field Artillery; 943rd Field Artillery; 944th Field Artillery; 945th Field Artillery; 946th Field Artillery; 947th Field Artillery; 948th Field Artillery; 949th Field Artillery; 950th Field Artillery; 951st Field Artillery; 952nd Field Artillery; 953rd Field Artillery; 954th Field Artillery; 955th Field Artillery; 956th Field Artillery; 957th Field Artillery; 958th Field Artillery; 959th Field Artillery; 960th Field Artillery; 961st Field Artillery; 962nd Field Artillery; 963rd Field Artillery; 964th Field Artillery; 965th Field Artillery; 966th Field Artillery; 967th Field Artillery; 968th Field Artillery; 969th Field Artillery; 970th Field Artillery; 971st Field Artillery; 972nd Field Artillery; 973rd Field Artillery; 974th Field Artillery; 975th Field Artillery; 976th Field Artillery; 977th Field Artillery; 978th Field Artillery; 979th Field Artillery; 980th Field Artillery; 981st Field Artillery; 982nd Field Artillery; 983rd Field Artillery; 984th Field Artillery; 985th Field Artillery; 986th Field Artillery; 987th Field Artillery; 988th Field Artillery; 989th Field Artillery; 990th Field Artillery; 991st Field Artillery; 992nd Field Artillery; 993rd Field Artillery; 994th Field Artillery; 995th Field Artillery; 996th Field Artillery; 997th Field Artillery; 998th Field Artillery; 999th Field Artillery; 1000th Field Artillery; 1001st Field Artillery; 1002nd Field Artillery; 1003rd Field Artillery; 1004th Field Artillery; 1005th Field Artillery; 1006th Field Artillery; 1007th Field Artillery; 1008th Field Artillery; 1009th Field Artillery; 1010th Field Artillery; 1011th Field Artillery; 1012th Field Artillery; 1013th Field Artillery; 1014th Field Artillery; 1015th Field Artillery; 1016th Field Artillery; 1017th Field Artillery; 1018th Field Artillery; 1019th Field Artillery; 1020th Field Artillery; 1021st Field Artillery; 102

# SUBSCRIPTION PLANS

## Rangers Set For Initial Kickoff Ag

### Ore Unit Site Is Not Selected

Experts' Favorable Reactions To Tests Impress Kilgore Director

#### KILGOROUND

By WINSTON GARDNER

THE TIME for thrilling football games, marching bands and everything else that goes with it is at hand. Right from the start Major Buren Thomas, director of the Bulldog band, believes he has something pretty good to offer the public this year. The band will make its first public appearance of the year Friday night when the Bulldogs play the Henderson Lions here. The boys and girls will be wearing their comparatively new uniforms, and will offer a combination of swing music and numbers by John Phillip Sousa. There will be no "front" this year—that is, a line of pretty girls in breath-taking uniforms—but only a drum major and two flags.

CONSISTING OF 75 members in five ranks, the band will be the best to play for Kilgore High in a long time, Thomas believes. They will play for Kilgore, and several East Texas festivals and contests. In fact, Kilgore is to hear quite a lot of the high school band this year.

MISS Darline Wise, winner of the Typical Texas Girl contest here, was off to Fort Worth Tuesday night, to see Gary Cooper at the world premiere of The Westerner and to seek high honors. She's 23 and is 5 feet, 5 1/2 inches tall. Manager Knox Lamb of The Crim announces that next Thursday night the Rangers football

### Enrollment Gain Near At College

Five hundred and fifty-three students had registered at Kilgore College today at noon, Dean H. E. Masters reported.

He said approximately 40 or 50 more were waiting to register and that enrollment likely would exceed by about 50 the number at the same time last year.

East Texans today awaited decision of Madaras Steel Corporation officials on the next step to be taken toward construction of a pilot plant in this area for trying out commercially the natural gas method of reducing iron ore.

Test runs conducted this week at Niagara Falls proved so successful that directors of the corporation voted to recommend to stockholders that they proceed at once with the erection of a plant at some location in East Texas.

L. N. Crim, Kilgore director of the Madaras corporation, returned this morning from Niagara Falls, stating that he was very much impressed with the reaction of several experts in the field of metallurgy, who witnessed the tests along with directors of the corporation.

"It was significant to me," Mr. Crim said, "that these men, recognized authorities in this field, were so obviously impressed with the success of the trial runs."

John Alford of Henderson, also a director, arrived in Kilgore with Mr. Crim this morning.

Interviewed by a Herald reporter, Mr. Alford said, "We, who are so much interested in iron ore development today may not realize much financially from the project, but it will be a satisfaction to know that our children, and even their children, may reap the benefits of East Texas' iron ore development."

Mr. Crim brought back with him samples of the "sponge iron," which is iron ore after it has been subjected to the Madaras process. The East Texas men had to board a train for home immediately after the tests, and as they did so several of the metallurgists remarked, "Well, we'll be seeing you in East Texas soon."

"This," said Mr. Crim, "had all the earmarks of a drill-stem test." Grissom statement.

On his return O. H. Grissom of Longview, chairman of the board of directors, issued the following statement:

"Test runs of the East Texas iron ore in the pilot plant at Niagara Falls, N. Y., this week were entirely satisfactory, and after witnessing the tests, directors of the Madaras Steel Corporation of Texas have decided to recommend to the stock holders that

### Heads Kilgore Junior Chamber



Jack Rogers, above, is the recently elected president of the Kilgore Junior Chamber of Commerce. A charter member of the organization, he has long been active in local civic affairs.

### 12 Blocks Of Paving Is Due City

Approval by the city commission of a project to pave approximately 12 additional blocks in five separate parts of the city was announced this week by City Secretary U. W. Prater.

Sealed proposals for construction work on the concrete paving job will be received by Mayor Roy H. Laird until 10 o'clock Tuesday morning, Oct. 8, at which time they will be opened and a contract awarded, Prater said. A notice to bidders describing the project is published in this issue of The Herald.

The project will complete street paving in the city limits, with the exception of Broadmoor Addition, one of the latest sections taken into the city limits.

Specifications for the work were drawn up by Consulting City Engineer A. P. Noyes.

The portions to be paved were described by Prater as follows: Andrews Street, from Thompson Street east to the city warehouse.

East North Street, from Thompson to the east end of the street.

Myrtle Street, from Thompson to the east end of the street.

South Street, from Elder to Laird Avenue.

Rusk Street, from Sabine

### Injuries A-Squad

Bulldogs Blast Lid For Henderson

### Kilgore College Rangerettes To March Tonight

Tonight's football season opener also will mark the first performance of the Kilgore College Rangerettes, 53 girls who specialize in precision marching.

Their costumes will include short skirts, white boots, arm gauntlets and cowboy hats. Director of the organization is Miss Gussie Nell Davis, who has had charge of several girls' marching teams before coming to Kilgore.

The performance will take place between halves of Kilgore College-Daniel Baker game.

### 70 Brought Into City Court For Violations

Municipal court was conducted at the Police Department this morning, with 70 bonds being forfeited by traffic and other violators.

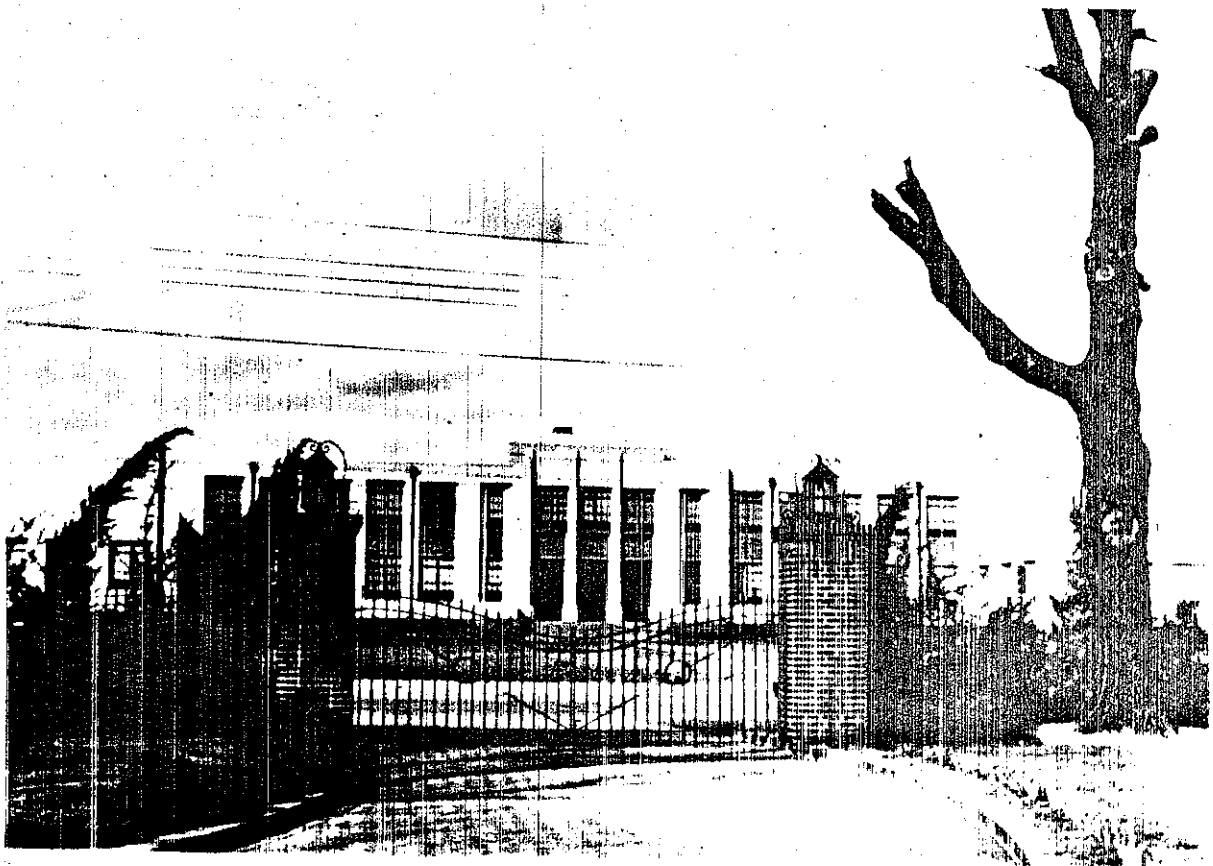
The violations follow: 22 for failure to stop for red signal lights; 10, boulevard stop signs; 7 for drunkenness; 8 for over-parking; 11 for speeding; 2 for failure to have operators' licenses; 2 for making U turns; and 1 each for parking in loading zone and operating a car with defective brakes.

Police Chief Bill Maddox again warned that drivers who run amber signal lights will be dealt with just as those who fail to observe the red lights. He also warned motorists to pull over to a curb and stop when they hear the siren of an emergency vehicle.

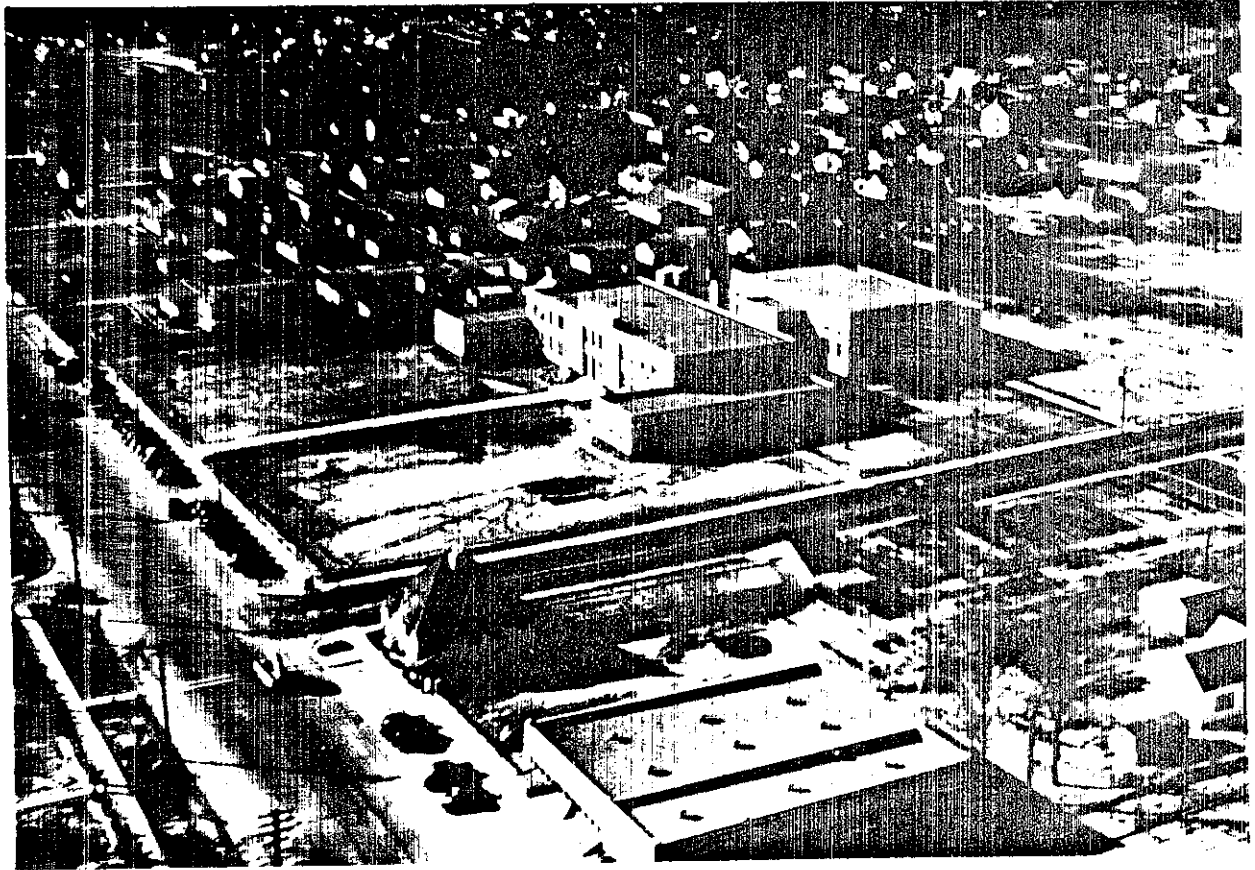
### 21 Kilgore Men Named On Jury

A petit jury list of 60 men, called for Sept. 23, for service in district court at Longview, includes the names of 21 Kilgore men.

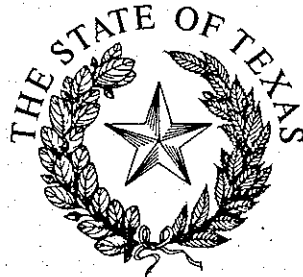
Summoned from here are the following: R. W. Elliott, H. E. Cato, P. L. Carr, Claud W. Smith, W. E. Duncan, D. N. Downing, Jerry Covington, S. E. Adamson, O. D. Childers, M. S. Callaway,



View from veranda of old Laird House 1937



100% (Campus 1938)



CURTIS TUNNELL  
EXECUTIVE DIRECTOR

# TEXAS HISTORICAL COMMISSION

P.O. BOX 12276

AUSTIN, TEXAS 78711

(512)463-6100

April 16, 1990

Norman W. Black, D.D.S.  
417 Mobberly Ave.  
Longview, TX 75602

RE: KILGORE COLLEGE ADMINISTRATION BUILDING

Dear Dr. Black:

This letter is to notify you that we have received the above referenced marker application.

The application first will be reviewed and evaluated by the Texas Historical Commission staff. Should additional information be needed, you will be contacted. After any deficiencies have been corrected, copies of the application will be sent to the members of the State Marker Committee, who will make the final determination of the topic's acceptability for marking.

You will be notified as soon as the committee makes its decision. If the topic is approved for marking, we will request payment at the time of notification. If not approved, the application will be returned along with a letter of explanation.

Because of the variables involved in the marker process and because we must coordinate our orders with the schedule of the contracting foundry, we would ask that the dedication date not be set until you have received notice that the marker has been shipped.

We appreciate your interest in preserving the history of Texas.

Sincerely,

*Frances Rickard*

Frances Rickard, Director  
State Marker Program

FR/bjb

cc: Mrs. Virginia Long  
B. E. Woodruff

P.S. What size marker are you requesting?

**APPLICATION FORM FOR OFFICIAL TEXAS HISTORICAL MARKER**  
**Texas Historical Commission**  
**State Marker Program**  
**P.O. Box 12276, Austin, Texas 78711**

Title of Marker (subject to revision by THC staff)	Kilgore College Administration Building	County Gregg	
Marker Location (street address and town, or specific directions from nearest town on state highway map)	1101 S. Henderson Boulevard, Kilgore		
Distance and direction of subject from marker site		If not on post, type of surface to which marker will be attached (wood, stone, etc.)	Brick Building
Owner of Marker Site	Kilgore College <i>B. L. Woodruff, President</i>	Address	City, Zip
Sponsor of Marker	Mrs. H. L. (Virginia) Long	2902 Royal Drive	Kilgore, Texas 75662
Signature of County Chairman	<i>Norman H. Beck, D.D.</i>	Address	City, Zip      Date
Person to whom marker is to be shipped*	Kilgore College    B. E. Woodruff	1100 Broadway	Kilgore, TX    75662-3299 214-984-3422

*\*If marker is to be placed on highway right-of-way, it will be shipped to your district highway engineer.*  
Please consult the back of this page for specifications of the markers available. Check the items desired below. Approval of the application and narrative *must* be obtained from the county historical commission, as indicated by the county chairman's signature on this form, before forwarding the material to the Texas Historical Commission. Please *do not* send payment if ordering subject or building markers; funds will be requested once the application has been approved by the State Marker Committee. Sales tax must be added to the price, except if purchased by a tax-exempt organization. Applicants may order a marker with a socket to attach to their own post; however, the cost is the same as a marker furnished with a foundry post.

**SUBJECT MARKERS**

- 16" x 12" grave marker (comes with mounting bar) .....\$225
- 27" x 42" subject marker with post .....\$750
- 27" x 42" subject marker without post .....\$700
- 18" x 28" subject marker with post .....\$450
- 18" x 28" subject marker without post .....\$400

I(We) request that RTHL designation be considered for this structure.  
(Please see signature line below.)

**BUILDING MARKERS**

- 16" x 12" building marker with post .....\$350
- 16" x 12" building marker without post .....\$300

Applications for building markers will automatically be considered for the RTHL designation. Please read carefully Texas Marker Policies 13 through 18, and indicate that you have done so by signing below.

*B. L. Woodruff*  
Signature of owner

**PAPERWEIGHTS**

Please indicate quantity desired.

- 3" x 4" plastic paperweight  
mounted with replica of marker .....\$90  
*Allow two months from completion of marker  
for receipt of paperweight.*
- Medallion paperweight .....\$40  
*Allows four lines of engraving; please indicate desired wording.*

**DIRECTIONAL SIGNS**

Please indicate quantity desired and give location(s) on form above:

- 24" x 24" Historical Markers In City sign .....\$80  
*These will be shipped to and placed on your town's city  
limits signs by the District Highway Engineer.*
- Black and White (for farm-to-market roads, state and U.S. highways)
- Green and White (for interstate highways)
- 18" x 22" Historical Marker directional sign .....\$80  
*In black and white only. For city and county roads.  
Applicant must supply post and be responsible for placement.*
- With arrow pointing straight ahead
- With arrow pointing left
- With arrow pointing right

**OTHER**

- 12" x 6" supplemental plate .....\$110
- 16" x 12" building marker plate only  
(see policy # 15) .....\$190
- Replacement medallion (see policy # 15) .....\$110
- Bronze stars (for replacement on 1936  
granite markers) .....\$ 25
- Bronze wreaths (for replacement on  
1936 granite markers) .....\$ 25
- Bronze seals (for replacement on  
1936 granite markers) .....\$ 65
- Bronze plates (for replacement on  
1936 granite markers) .....\$185

KILGORE COLLEGE  
ADMINISTRATION BUILDING

The impact of the East Texas Oil Field on Kilgore resulted in more than dramatic economic changes. It directly influenced significant developments in the town's government, growth patterns, and educational system. One of the boom era's most important legacies is Kilgore College. As authors Doris B. Bolt and Bonnie M. Durning noted in their history of the school:

Kilgore College is a gift from the oil fields to the people of East Texas. It is a river that flows through the area, its tributaries reaching into every small community, offering educational opportunities and cultural enrichment to many who would otherwise be deprived.<sup>1</sup>

The "boom" created the demand for a junior college and oil provided the necessary financial base, but Kilgore residents provided the initiative to move the project forward. The idea for the establishment of a junior college in Kilgore was initiated by W. L. Dodson, superintendent of the local school district. Even before moving to Kilgore from South Texas in 1932, Dodson had strongly advocated the need for a college in Gregg County. He had even discussed the idea with Longview school officials, who, in 1934, proposed their city as the site for a college supported



financially by all the towns in the county. After joining the Kilgore district, however, Dodson soon persuaded that school board that Kilgore had the requisite civic leadership and economic resources to develop the college on its own.<sup>2</sup>

What appears now to be a bold and progressive decision on the part of the trustees was considered by many observers at the time an unwise and unnecessary gamble. Despite the vast potential of the East Texas Oil Field, the nation was still suffering from the devastation of the economic depression. As a result, many public institutions, including junior colleges, were closing. Walter A. Jessup of the Carnegie Foundation, a leading contributor to educational causes, offered the following assessment of the crisis:

... many colleges will lose ground and some will disappear in the coming struggle for existence. . . . Shrinking educational endowments, reductions in tuition, and a scarcity of new bequests contribute to the financial dilemma which threatens the existence of many colleges and universities.<sup>3</sup>

Despite similar concerns locally, the Kilgore school board voted to proceed immediately with establishment of the Kilgore junior college. To direct the project, superintendent Dodson recruited educator B. E. Masters (d. 1975). An organizer of Paris Junior College, Masters was then serving as president of Amarillo Junior College. He became dean of the new Kilgore school in the summer of 1935,

just a few days before the State Board of Education formally approved establishment of a Kilgore junior college district. Taxpayers of the Kilgore Independent School District responded favorably in a July election, and the junior college became a reality on August 1, 1935, when the votes were canvassed.<sup>4</sup>

While the board decided to temporarily house classes in the high school (and later in the Church of Christ), planning began almost immediately for a separate campus with new buildings. The San Antonio architectural firm of Phelps and Dewees, retained for initial design consultation, also oversaw the filing of applications for Public Works Administration assistance. Their efforts with regard to the PWA were successful, and in October 1935, college officials received notice that the New Deal agency would fund 45% of the projected \$200,000 construction costs. The project provided for an administration building, gymnasium, and other improvements. Following a successful bond election and the acquisition of a new campus on the south side of town, groundbreaking began on January 21, 1936.<sup>5</sup>

The Administration Building was designed by Phelps and Dewees. Begun in 1919 by Raymond Phelps, Sr. (d. 1958) and Dahl Dewees (d. 1965), the architectural partnership established a statewide reputation for the design of

educational complexes and institutional structures. The business continues today in San Antonio under the name Phelps/Garza/ Bomberger, with Raymond Phelps, Jr. as a partner. Mr. Phelps provided important information about the firm's most significant projects, which include such Bexar County landmarks as Joe Freeman Coliseum, Santa Rosa Hospital, the USAA Building (on Broadway), Methodist Hospital, and the University of Texas Medical Center. In addition to Kilgore College, the company designed educational complexes for San Antonio College and for Texas A & I in Kingsville. From 1922 to 1974, it was also the principal design team for the San Antonio Independent School District.◀

The style Phelps and Dewees chose for the Kilgore College Administration Building exhibits Art Deco influences, especially in the overall massing and the choice of materials. A pronounced tripartite entry topped by a parapet provides a strong central element to the two-story building. Complementing the entry are the distinct vertical divisions utilizing recessed windows and spandrels and contrasting dark recessed areas with lighter projecting sections. Additional features include a flat roof, paired casement windows, and one-story flanking wings. The

principal materials are buff-colored brick with lighter concrete detailing.<sup>7</sup>

The Administration Building was completed in November 1936. As reported in the Kilgore Daily News:

The new building lacks nothing in the way of modern conveniences. It is attractive inside and out and is regarded as one of the city's largest and best buildings.

The first floor contains business and executive offices, teachers' offices, five class rooms, the business administration department rooms, a dramatic arts auditorium with stage equipment, a large library and reading room, two rest rooms and other rooms.<sup>8</sup>

In addition, there was also a separate gymnasium/auditorium connected to the rear of the Administration Building (The marker application, it should be noted, is only for the latter).

When Kilgore College began classes on its new campus, there were just over 300 students. Enrollment grew to more than 500 within four years and new buildings were soon added to accommodate the continued increases. The construction of new facilities over the years has greatly expanded the campus of Kilgore College. Today, the institution is located on several campuses, including one in Longview. The original one in Kilgore remains the focal point of the system, however, and the Administration Building serves as the most important reminder of the school's early history. It is a tribute to progress, to the people of Kilgore, and

to one of the state's outstanding institutions of higher education.

Written by:  
Dan K. Utley, Austin

Researched by:  
Virginia Long

## ENDNOTES

<sup>1</sup>Doris B. Bolt and Bonnie M. Durning, A History of Kilgore College, 1935-1981. (Kilgore: Kilgore College Press, 1981), p. 29.

<sup>2</sup>Bolt and Durning, pp. 30-31.

<sup>3</sup>Bolt and Durning, p. 33.

<sup>4</sup>Bolt and Durning, pp. 38-39.

<sup>5</sup>Bolt and Durning, p. 58.

<sup>6</sup>Raymond Phelps, Jr. Phone conversation with Dan K. Utley, March 5, 1990.

<sup>7</sup>David W. Moore. Interviewed by Dan K. Utley, February 1990, Austin, Texas.

<sup>8</sup>Kilgore Daily News, November 10, 1936, p. 1.

## BIBLIOGRAPHY

Bolt, Doris, and Bonnie M. Durning. A History of Kilgore College, 1935-1981. Kilgore: Kilgore College Press, 1981.

Kilgore Daily News. November 10, 1936.

Moore, David W. Conversation with Dan K. Utley, February 1990. Mr. Moore is a historian and a partner in the historic preservation firm of Hardy Heck Moore, Austin.

Phelps, Raymond, Jr. Phone conversation with Dan K. Utley, March 5, 1990. Mr. Phelps is a partner in the San Antonio architectural firm of Phelps/Garza/Bomberger. He is also the son of Raymond Phelps, Sr., a founder of Phelps and Dewees.



CURTIS TUNNELL  
EXECUTIVE DIRECTOR

# TEXAS HISTORICAL COMMISSION

P.O. BOX 12276

AUSTIN, TEXAS 78711

(512)463-6100

October 5, 1990

B. E. Woodruff, President  
Kilgore College  
1100 Broadway  
Kilgore, Texas 75662-3290

RE: KILGORE COLLEGE ADMINISTRATION BUILDING  
1101 S. Henderson, Kilgore  
16" x 12" building marker without post  
(Job #18990)

Dear Mr. Woodruff:

This letter is to notify you that the State Marker Committee has reviewed and approved the above-referenced structure for the Recorded Texas Historic Landmark (RTHL) designation. This special status, awarded to properties deemed worthy of preservation for their architectural integrity and historical associations, conveys a measure of legal protection to the building. Notification of any modifications to the exterior of this structure should be made to the Texas Historical Commission at least 60 days prior to the commencement of work. Please refer to the enclosed brochure for further information on the RTHL designation.

At this time payment for the marker is due. A check, in the amount of \$324.00 (\$300.00 if paid for by a tax-exempt organization) should be made payable to the Texas Historical Commission and sent to the letterhead address as soon as possible. Once payment is received, the application will be placed in line to have the marker inscription written. The inscription will not be prepared until after funds have been received. When the text is written, a copy will be sent to you and any parties listed below for review.

The Texas Historical Commission wishes to congratulate you on the preservation of this fine structure and appreciates your effort to record Texas history in this manner.

Sincerely,

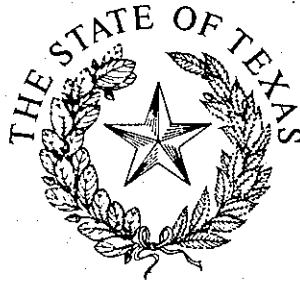
*Frances Rickard*

Frances Rickard, Director  
State Marker Program  
FR/bb

cc: Dr. Norman Black, Gregg CHC  
Virginia Long

*The State Agency for Historic Preservation*





CURTIS TUNNELL  
EXECUTIVE DIRECTOR

# TEXAS HISTORICAL COMMISSION

P.O. BOX 12276

AUSTIN, TEXAS 78711

(512) 463-6100

November 14, 1990

Dr. Norman Black  
417 Mobberly  
Longview, TX 75602

RE: KILGORE COLLEGE ADMINISTRATION BUILDING  
16"x12" building marker w/o post

Dear Dr. Black:

Enclosed is the proposed inscription for the above referenced marker. Please review and verify the information contained in the inscription. In particular, be sure to check all names and dates, and make certain we have used the correct marker location. Please contact other sponsors of this application to discuss the wording of the marker. If you approve the inscription, sign and return your own enclosed card.

If you have corrections or changes to suggest, please make a copy of the inscription and return it to us with the marked corrections. Please do not type a new version of the inscription. We will make changes to meet our style and spacing requirements. Documentation of any changes in this inscription, particularly of names and dates, is required for our permanent file.

Note that this is a working copy, including filing and foundry instructions. The right-hand margin is uneven on this copy, but will be justified on the finished marker.

The marker will not be ordered for casting until the county historical commission and other persons or groups listed below have approved the inscription. You may retain this inscription copy for your files.

Sincerely,

Cynthia J. Beeman, Historian  
State Marker Program

CJB/bjb

Enclosure

cc: Mrs. Virginia Long  
B. E. Woodruff

Texas Historical Commission Staff (CJB), 11/12/90

Official Texas Historical Building Marker without post, for brick  
Gregg County (Job #18990)

Location: 1101 S. Henderson Blvd., Kilgore

KILGORE COLLEGE\*  
ADMINISTRATION BUILDING\*

IN RESPONSE TO THE EAST TEXAS OIL  
FIELD BOOM, YET IN THE MIDST OF  
THE GREAT DEPRESSION, KILGORE RESI-  
DENTS VOTED TO SUPPORT THE ESTAB-  
LISHMENT OF A JUNIOR COLLEGE IN  
1935. CLASSES WERE HELD IN THE HIGH  
SCHOOL UNTIL THIS BUILDING WAS  
COMPLETED IN 1936 WITH FINANCIAL  
AID FROM THE PUBLIC WORKS ADMIN-  
ISTRATION, DESIGNED BY THE SAN  
ANTONIO FIRM OF PHELPS & DEWEES,  
THE KILGORE COLLEGE ADMINISTRATION  
BUILDING REMAINS A GOOD EXAMPLE  
OF ART MODERNE ARCHITECTURE. \*\*

RECORDED TEXAS HISTORIC LANDMARK - 1990\*\*\*

\*3/8 inch lettering to contrast with text

\*\*3/8 inch lettering

\*\*\*1/4 inch lettering



CURTIS TUNNELL  
EXECUTIVE DIRECTOR

# TEXAS HISTORICAL COMMISSION

P.O. BOX 12276

AUSTIN, TEXAS 78711

(512)463-6100

December 5, 1990

Norman W. Black, D.D.S.  
417 Mobberly Ave.  
Longview, TX 75602

RE: KILGORE COLLEGE ADMINISTRATION BUILDING  
16"x12" building marker w/o post

Dear Dr. Black:

This is to advise you that we have ordered the above referenced marker for casting. The completed marker should be ready for shipment within twelve to fifteen weeks. A copy of the final inscription as it was sent to the foundry is enclosed for your files.

If you have not already done so, this would be a good time to begin planning the marker dedication ceremony. We would advise you, however, to avoid setting the dedication date to coincide with the shipment date as estimated above. That estimate does not take into account potential shipping errors or other unforeseeable delays, which might upset the best laid dedication plans. A guide to assist you with your dedication plans is available upon request from our office. Since this is a state program, we suggest your state representative and/or senator be included in the program as well as your county judge and commissioners who have appointed your commission.

Enclosed please find a form for announcing the date of your marker dedication ceremony in the THC's monthly newsletter, The Medallion. Please read the form carefully, as notice must be made well in advance of the scheduled dedication in order to appear in the preservation calendar.

We would appreciate having copies of any publicity, programs, photos, or other memorabilia from the ceremony to complete our file on this marker. Thank you for your continued support and good work toward the preservation of the history of our state.

Sincerely,

Frances Rickard, Director  
State Marker Program

FR/bb

cc: B. E. Woodruff  
Mrs. H. L. Long

*The State Agency for Historic Preservation*



CURTIS LUNNEL  
EXECUTIVE DIRECTOR

# TEXAS HISTORICAL COMMISSION

P.O. BOX 12276

AUSTIN, TEXAS 78711

(512)463-6100

February 13, 1991

Mrs. Virginia Long  
2902 Royal Drive  
Kilgore, TX 75662

RE: KILGORE COLLEGE ADMINISTRATION BUILDING  
Medallion and 16" x 12" plate w/o post  
Job#: 18990  
Date shipped: 1/30/91  
Shipping company: UPS

Dear Mrs. Long:

This letter is to notify you that the above referenced marker has been shipped to: B. E. Woodruff, Kilgore College, 1100 Broadway, Kilgore, TX 75662-3299. If you have not received it, please contact Sylvia at the Southwell Company at 512/223-1831 so that your marker may be traced. Please be prepared to give her the job number, date shipped, and shipping company name.

Now would be a good time to set the date of the marker dedication. Enclosed is a form for announcing your dedication in the THC's monthly newsletter, The Medallion. Please read the form carefully; the Medallion staff must receive your notice well in advance in order to meet printing deadlines.

We would appreciate having photocopies of any newspaper clippings (rather than the original clippings, which aren't archivally stable), as well as copies of programs, photos, or other memorabilia about the dedication ceremony to complete our file on this marker.

Thank you for your continued support and good work toward the preservation of the history of our state.

Sincerely,

Frances Rickard, Director  
State Marker Program

/ap

cc: B. E. Woodruff  
✓Norman W. Black, Gregg CHC

# Kilgore College plans homecoming Oct. 26

The arrival of October marks the approaching of the annual homecoming celebration for Kilgore College. The 1991 homecoming is scheduled Oct. 24-26. Activities are planned to involve all segments of the college community — alumni, students, employees, retirees and college supporters.

Traditional events scheduled this year include a pep rally, a luncheon for the Rangerettes Forever, a football game and presentation of special awards to a former teacher and student.

Non-traditional events scheduled this year include the dedication of a historical marker for a building, a dedication and open house of a new building, a reunion of a football team and a concert.

The busy weekend opens at 11 a.m. Thursday, Oct. 24 with a pep rally in Masters Gym. The homecoming court will be presented with the election of the queen to follow with student ballots Thursday afternoon and Friday morning.

A dedication of a historical marker for the Old Main Building on the Kilgore College campus is scheduled for 10 a.m. Friday, Oct. 25.

Also, a dinner honoring the 1966 National Championship Kilgore College Ranger football team is scheduled for 7 p.m. Friday in the Community Inn. Tickets to the dinner are \$10.50 each and are available in the Student Services Office at Kilgore College. Reservations must be made by Monday, Oct. 21.

Saturday's schedule begins at 10:30 a.m., and continues until 10 p.m.

Opening the day will be a dedication and open house of the James M. Parks Fitness Center at 9:30 a.m. The open house will continue until 12 noon. Also scheduled to be open for tours will be the Joe Turner Physical Education Complex and Masters Gym.

Also open throughout the day for returning exes and other visitors are the East Texas Oil Museum and Rangerette Showcase.

The Rangerettes Forever will have their fall luncheon at 11:30 a.m. Saturday at the Community Inn. New officers and directors are to be elected. Tickets to the luncheon are \$8.50 and may be purchased in the Public Information Office. Advance reservations are required.

At 3 p.m., the Kilgore College Rangers and Trinity Valley Community College Cardinals clash in a key Texas Eastern Junior College Conference game. Reserve seat tickets are \$5 and may be purchased at the Student Services Office.

The halftime will include the presentation of the 1991 homecoming queen and her court and introduction of the 1966 National Championship Kilgore College Ranger football team.

Halftime entertainment will be provided by the Rangerettes, Ranger Band, Cardinal Band and Cardettes.

Closing out the weekend will be a new event, a Reunion Concert, scheduled for 8 p.m. in Dodson Auditorium. The concert will feature The Fresh Boys, a group of Kilgore College exes who performed together when they were students in the 1950s. Music for the concert will be from the '50s. Members of the group are Don Florey, Wehlan McPherson, Mike Post, Mike Perkins and Randy Williams.

The concert is sponsored by the Ex-students Association and replaces the traditional awards banquet. During the concert, the association will present awards to the Ex-Student of the Year and Ex-Teacher of the Year. New officers for the Ex-Students Association will also be elected.

Tickets to the concert are \$5 each and may be purchased through the Kilgore College Box Office, 983-8601. All seats are reserved. Net proceeds from the concert will go to establishing an Ex-Students Association Scholarship Fund.

# College to dedicate marker

A Texas Historical Marker Dedication for the Old Main Building at Kilgore College is scheduled for 10 a.m. Friday with State Representative Jerry Yost the speaker. The brief ceremony will be at the front of the entrance of the building. The public is invited to attend.

Old Main opened as the Administration Building on Nov. 9, 1936, one and one-half years after the college began offering classes. It was the first of two buildings constructed on the campus.

When first occupied, the first floor contained business and executive offices, teachers' offices, five classrooms, the business depart-

ment, an auditorium and library.

When the college began classes on its new campus, there were just over 300 students. Today's enrollment exceeds 4,400.

Old Main remains the focal point of the campus and is still used for offices and classrooms.

Yost, who is serving his fourth two-year term as State Representative for District 7, will be introduced by B.E. Woodruff, president of Kilgore College. Woodruff will also give the welcome and introduce board members.

Lynn Holt, president of the Ex-Students Association, will introduce other guests.

Following Yost's address, O.G. Johnston, president of the Kilgore College Board of Trustees, will give the response. Dr. Norman W. Black, chairman of the Gregg County Historical Commission, will dedicate the marker and Virginia Long, president of the Kilgore Chamber of Commerce, will read the inscription.

Unveiling of the marker will be by Mrs. Long and Johnston.

The Kilgore College Chorale, directed by Dale Miller, will sing "Texas Our Texas" following the unveiling.

Michael Turpin, president of the

Kilgore College Employees Association, will serve as master of ceremonies. The Rev. Ricky Ricks, pastor of First United Methodist Church in Overton, will give the invocation and the Rev. James Kirkland, pastor of White Oak Missionary Baptist Church, will give the benediction.

Yost is presently serving as vice chairman of the energy Committee, as a member of the Budget and Oversight Committee, as a member of the Natural Resources Committee and chairman of the subcommittee on Water Districts and Budget and Oversight for the Texas House of Representatives.

# College to mark homecoming

Kilgore College marks its 1991 homecoming this week with events beginning with a pep rally Thursday morning and continuing through a

Reunion Concert Saturday night. Events are planned for exes, students and friends of the college.

Included in the schedule are two dedication ceremonies for buildings on the campus — one the oldest building and the other the newest building.

The agenda opens at 11 a.m. Thursday with a pep rally in Masters Gym

Friday's schedule included a dedication of a Texas Historical Marker for the Old Main Building at 10 a.m. and a reception and dinner for the 1966 national championship football team at 5:30 and 7 p.m., respectively, in the Community Inn.

On Saturday, a dedication of the James M. Parks Fitness Center will be held at 9:30 p.m. An open house will continue until 12 noon for this building and the Joe Turner Physical Education Complex.

The Rangerettes Forever will have a luncheon at 11:30 a.m. in the Community Inn.

At 3 p.m. Saturday, the Kilgore College Rangers meet the Trinity Valley Community College Cardinals in a Texas Junior College

Football Conference match in R.E. St. John Memorial Stadium.

Members of the '66 national championship football team will be introduced during pre-game ceremonies and a presentation to the college from the team will be made at halftime.

Also at halftime, the 1991 homecoming queen and her court will be presented.

A Reunion Concert at 8 p.m. in Dodson Auditorium closes out the homecoming activities. The concert will be music from the '50s performed by The Fresh Boys, a group of Kilgore College exes who were popular in the '50s.

Tickets to the Reunion Concert and football game will be on sale at each event Saturday. Tickets are \$3 for each event. Tickets to the Rangerettes Forever luncheon are \$8.50 and tickets to the football team reunion are \$12.50. These require advance reservations.

Windows on the Kilgore College campus buildings have been decorated and banners are being prepared for the campus and stadium to welcome the return of exes to the campus.

## Index

Classified .....	6
Comics .....	7
Crossword .....	7
Daily Digest .....	5
Dear Abby .....	7
Editorials .....	4
Horoscope .....	7
Obituaries .....	5
Sports .....	2
TV notes .....	4

## Weather

By Associated Press

**KILGORE:** Sunny and warm Thursday with highs in the 80s. Cloudy Thursday with a chance of rain. Highs continuing in the 80s. Lows tonight in the upper 60s.

### LOCAL WEATHER

(Chalk Hill Weather Station)

Hi yesterday	81	Wind	Calm
Low overnight	56	Barom.	30.02
Sunrise	6:35	Temp. 8 a.m.	56
Sunset	7:25	Rain	None

# THE FLARE

The Newspaper of Kilgore College  
Sweepstakes Winner Division III Texas Intercollegiate Press Association  
Sweepstakes Winner Division II Texas Community College Journalism Association

Kilgore, Texas

NON-PROFIT ORG.

U.S. Postage

PAID

Kilgore, TX. 75662

Permit No. 59

October 24, 1994

## Marker dedication scheduled Oct. 25

A Texas Historical Marker Dedication is planned for the Old Main Building, the first building constructed on the KC campus, at 10 a.m. Friday, Oct. 25. State Representative Jerry Yost will be on hand to speak at the brief ceremony.

The Old Main Building opened as the Administration Building on Nov. 9, 1936. When first occupied, the building contained business and executive offices, teachers' offices, five classrooms, the business department, an auditorium and a library. The Old Main Building is still used for offices and classrooms and remains the focal point of the campus.

Yost, representative for District 7 and a committee member on many of the state's current projects, will be introduced by KC president B.E. Woodruff, who will also welcome the audience and introduce Board of Trustee members.

Lynn Holt, president of the Ex-Students Association, will introduce the other guests.

Following Yost's address, O.G. Johnston, president of the KC Board of Trustees, will give the response. Dr. Norman W. Black, chairman of the Gregg County Historical Commission, will dedicate the marker, and Virginia Long, president of the Kilgore Chamber of Commerce, will read the inscription. She and Johnston will then unveil the marker.

The KC Chorale, directed by Dale Miller, will sing "Texas, Our Texas" following the unveiling.

Michael Turpin, president of the KC Employees Association, will serve as master of ceremonies. The Rev. Ricky Ricks of First United Methodist Church in Overton will give the invocation. Rev. James Kirkland, pastor of White Oak Missionary Baptist Church, will give the benediction.



## Kilgore College dedicates historical marker Friday

Special to the Longview News-Journal

**KILGORE** — A Texas Historical Marker Dedication for the Old Main Building at Kilgore College is scheduled for 10 a.m. Friday with State Representative Jerry Yost the speaker.

The brief ceremony will be at the front of the entrance of the building. The public is invited to attend.

Old Main opened as the Administration Building on Nov. 9, 1936, one and one-half years after the college began offering classes. It was the first of two buildings constructed on the campus.

When first occupied, the first floor contained business and executive offices, teachers' offices, five classrooms, the business department, an auditorium and library. When the college began classes on its new campus, there were just

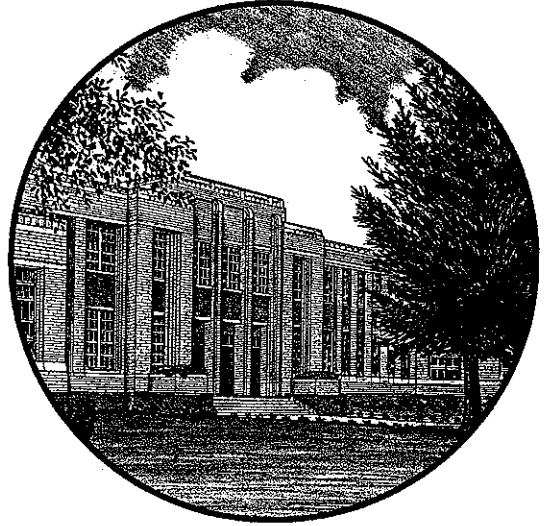
over 300 students. Today's enrollment exceeds 4,400.

Old Main remains the focal point of the campus and is still used for offices and classrooms. Yost, who is serving his fourth two-year term as State Representative for District 7, will be introduced by B.E. Woodruff, president of Kilgore College.

Dr. Norman W. Black, chairman of the Gregg County Historical Commission, will dedicate the marker and Virginia Long, president of the Kilgore Chamber of Commerce, will read the inscription.

The Kilgore College Chorale, directed by Dale Miller, will sing "Texas Our Texas" following the unveiling. Michael Turpin, president of the Kilgore College Employees Association, will serve as master of ceremonies.

# TEXAS HISTORICAL MARKER DEDICATION



## OLD MAIN KILGORE COLLEGE OCTOBER 25, 1991

- Master of Ceremonies ..... Mr. Michael Turpin  
President, Kilgore College Employees Association
- Invocation ..... The Rev. Ricky Ricks  
Pastor, First United Methodist Church, Overton
- Introduction of Guests ..... Mrs. Lynn Holt  
President, Kilgore College Ex-Students Association
- Welcome  
Introduction of Speaker ..... Mr. B.E. Woodruff  
President, Kilgore College
- Address ..... The Honorable Jerry Yost  
State Representative, District VII
- Response ..... Mr. O.G. Johnston  
President, Kilgore College Board of Trustees
- Dedication of Marker ..... Dr. Norman W. Black  
Chairman, Gregg County Historical Commission
- Reading of Inscription ..... Mrs. Virginia Long  
President, Kilgore Chamber of Commerce
- Unveiling of Marker ..... Mrs. Virginia Long  
Mr. O.G. Johnston
- Music Selection ..... Kilgore College Chorale  
"Texas Our Texas"  
Mr. Dale Miller, Director
- Benediction ..... The Rev. James Kirkland  
Pastor, White Oak Missionary Baptist Church

## **Kilgore College Board of Trustees**

Mr. O.G. Johnston, President

Mr. Donald Kruse, Secretary

Mr. Richard D. Boyle

Mr. John T. Crim, Jr.

Mr. L. Adrian Dozier

Mr. C.G. Mata

Mrs. Jean McLaurin

Mr. Fred S. Parsons

Mr. R.E. Spradlin

## **Gregg County Historical Commission**

Dr. Norman W. Black, Chairman

Mrs. Amelia Belding, Chairman Emeritus

Mrs. Helen McHaney Griffin, Vice Chairman

Mrs. Gordon J. Mayer, Secretary-Treasurer

Mrs. Nancy Ruff, Reporter

Mrs. Mildred Wood Barker

Mrs. Sally Gossett Barron

Mrs. Jack Buchanan

Mrs. Anne P. Cammack

Mrs. Pauline Cox

Mrs. B.W. Crain, Jr.

Sondra Daniel

Mrs. Bill W. Dodson

Dr. Ken Durham

Mrs. Nelda Lewis

Mrs. H.L. Long

Dr. W.D. Northcutt, III

Mrs. John W. Osteen

Mrs. Amanda Pratt

Mr. Ben Reynolds

Mrs. Charlotte Teske

Mr. Joe L. White



**MARKER UNVEILED** — O.G. Johnston, chairman of the board of Kilgore College, and Virginia Long unveil a historical marker at Old Main on the college campus. The event was held on Friday morning at 10 a.m.

## *Historical marker dedicated at KC*

By MELINDA BIGELOW

A Texas historical marker was dedicated at Kilgore College Friday morning in front of Old Main.

The marker is inscribed, "In response to the East Texas oil field boom, yet in the midst of the great depression, Kilgore residents voted to support the establishment of a junior college in 1935. Classes were held in the high school until this building was completed in 1936 with financial aid from the public works administration. Designed by the San Antonio firm of Phelps & Dewees, the Kilgore College Administration Building remains a good example of Art Moderne Architecture."

The style of the building was an international style used concurrently with Art Deco and it began to be used in the 1920s.

Michael Turpin, president of the Kilgore College Employees Association, was master of ceremonies for the ceremony.

The Rev. Ricky Ricks, pastor of the First United Methodist Church in Overton, voiced the invocation.

Mrs. Lynn Holt, president of the Kilgore College Ex-Students

Association, introduced the guests.

Rep. Jerry Yost spoke briefly, praising the students, educators and community leaders for their contribution to the historical significance of Old Main.

Dr. Norman W. Black, chairman of the Gregg County Historical Commission, dedicated the marker; and Mrs. Virginia Long, president of the Kilgore Chamber of Commerce, read the inscription.

The marker, draped in red velvet, was unveiled by Mrs. Long and O.G. Johnston, president of the Kilgore College board of trustees.

Concluding the program was a rendition of "Texas, Our Texas" by the Kilgore College Chorale, and benediction by the Rev. James Kirkland, pastor of White Oak Missionary Baptist Church.

# ★ KC

(Continued from Page 1A)

judges. They depicted characters on the window and welcomed back the Class of 1966 on the door.

+++

## HISTORICAL MARKER DEDICATION

Friday morning at 10 a.m. in front of the Old Main Building, a historical marker in honor of the college being founded in 1935 and the Old Main Building being completed in 1936 was unveiled.

Michael Turpin, president of the Kilgore College Employees Association, was the emcee for the event. Rep. Jerry Yost, R-Longview, spoke briefly during the event.

The marker was unveiled by Virginia Long, president of the Kilgore Chamber of Commerce, and O.G. Johnston, president of the Kilgore College Board of Trustees.

+++

**Norman Black**

---

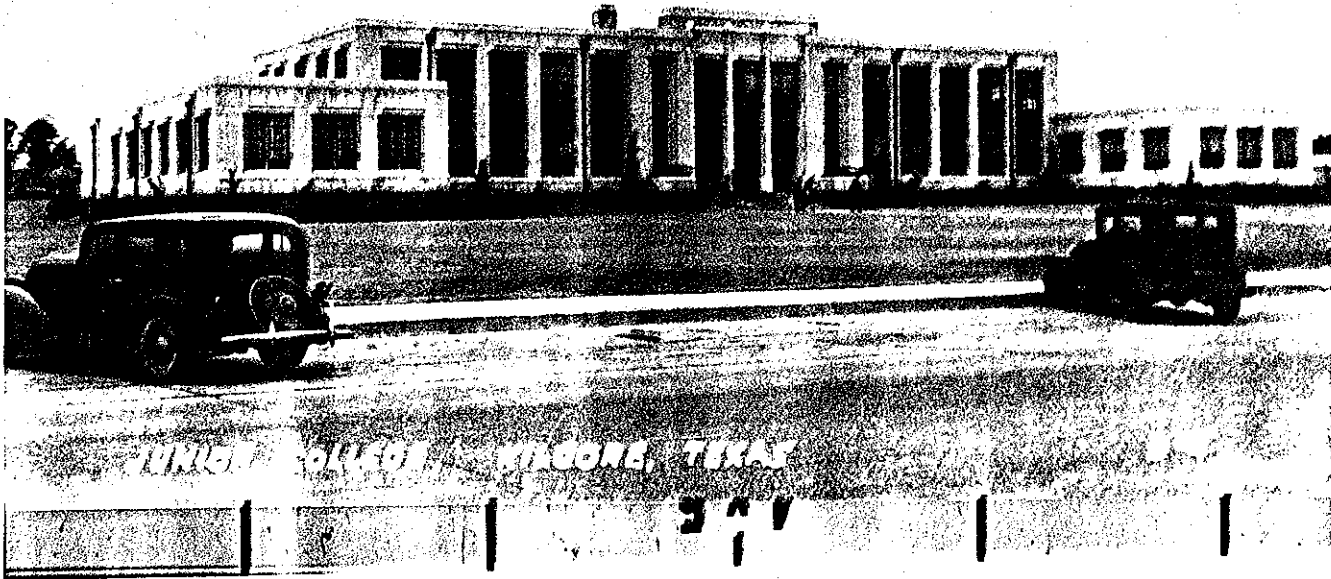
**From:** "Norman Black" <norman.black@co.gregg.tx.us>  
**To:** "Dan Utley" <dan.utley@thc.state.tx.us>  
**Sent:** Friday, January 07, 2000 12:46 PM  
**Subject:** Kilgore College Administration Building

Hello, Dan,

I was just looking at an archival photo of the building made in 1935 or '36. It is of the front of the building taken from or across the street. The photo will leave my hands today to be scanned for our new book "Historic Gregg County" Otherwise, I would copy it and send it to you. I think I shall anyway using my copy machine and see what you think. You know, there is just not a lot of difference, at least with my poor eyes.

Regards,  
Norman

Dr. Norman Black  
Chairman  
Gregg County Historical Commission  
(903) 757-2261



LIRRE MIDSONG, TEXAS

341

# KC restoring historic campus landmark

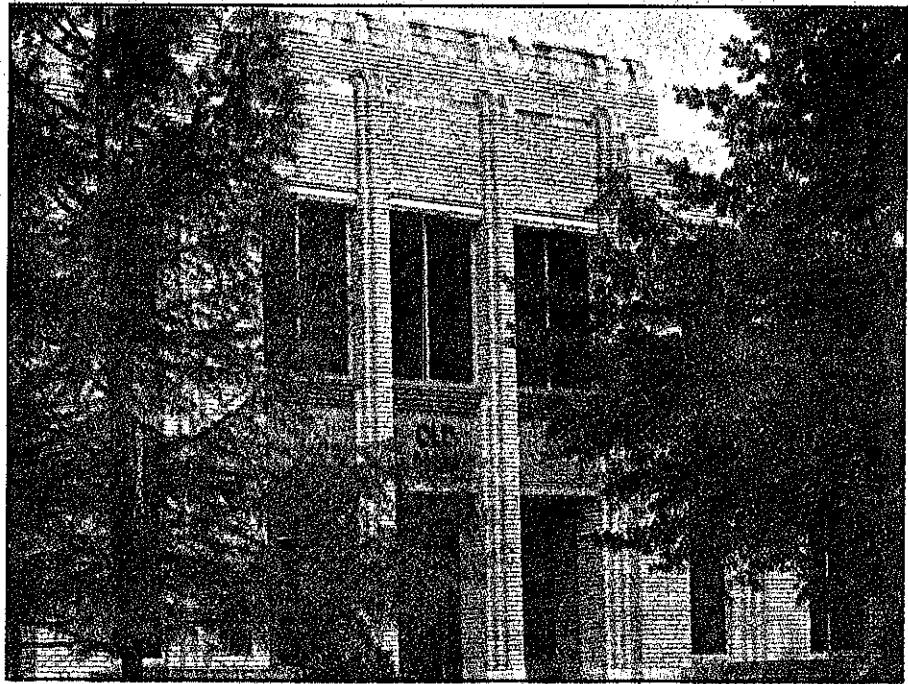
By CHRIS MOORE

Kilgore College

It has stood for almost 70 years, its hardwoods and long hallways polished by more than 135,000 students and faculty since 1936. Its classrooms have remained open, educating East Texas residents since the historical days of Boomtown, USA. The Old Main Building at Kilgore College is the epitome of KC's motto, "Emphasis Excellence."

But almost seven generations of students have taken their toll on the Kilgore landmark. College officials and the Kilgore College Foundation have decided not to sit idly by while time winds down on the old structure.

"Old Main is the heart of Kilgore College, symbolizing the hopes and dreams of an entire community," said KC President Bill Holda. "We can restore and

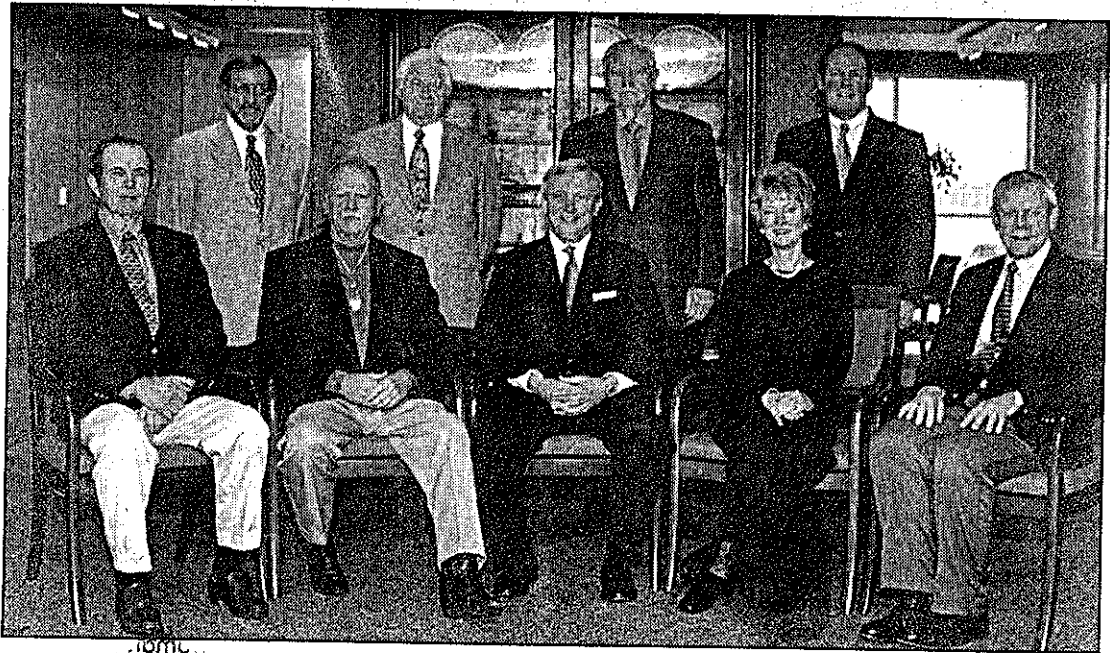


Old Main at Kilgore College is being restored and remodeled.

I bn.  
dr jr

See OLD MAIN, Page 3





The Kilgore College Foundation has thrown full support to KC's campaign to restore the Old Main Building. Total renovation is nearing completion internally while the outside will maintain its historical look. Foundation members are (front, from left) KC Board of Trustees President Marion Turner, Caleb Pirtle, Foundation President Ken Raney Jr., Kellyn Drayer and KC President Dr. Bill Holda. (Back,



**Gregg County Historical Commission**

417 Mobberly Avenue  
Longview, Texas 75602

Norman W. Black, D.D.S.  
Chairman

Phone 903-757-2261  
Fax # 903-753-5337

May 30, 2005

Dan K. Utley, Chief Historian  
Texas Historical Commission  
P.O. Box 12276  
Austin, Texas 78711

Re: Kilgore College Administration Building

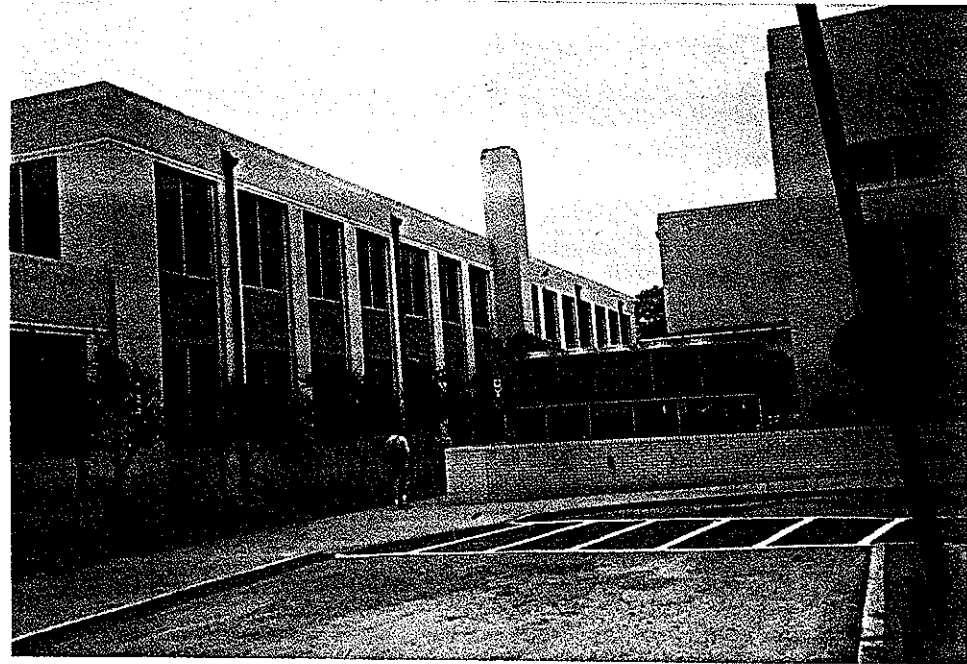
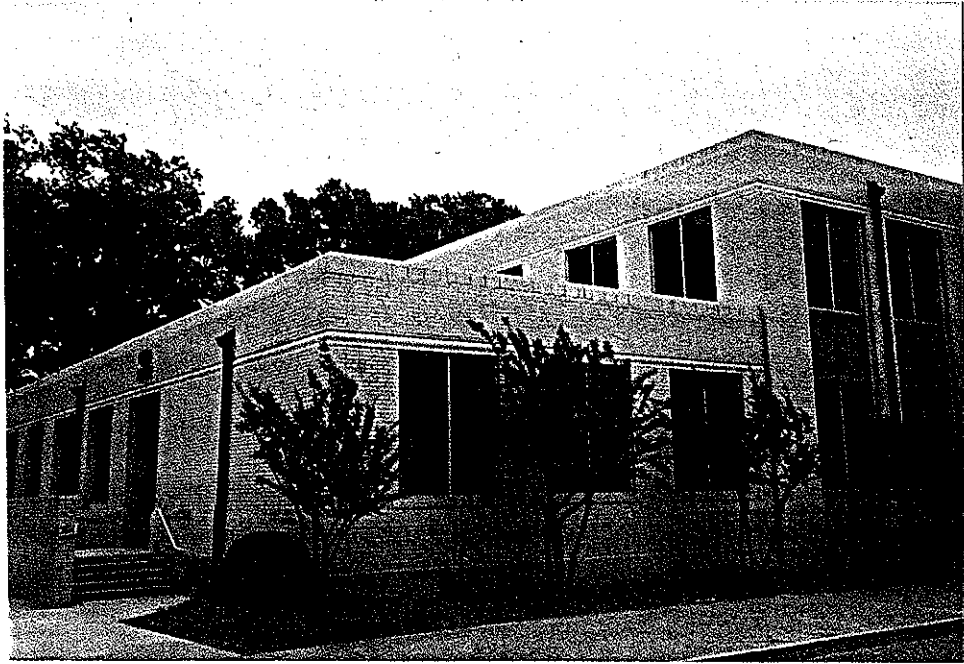
Dear Dan,

Here are some recent (2 days old) photographs of the building. I am also sending the only pictures I have because Virginia Long apparently worked up the application and brought it to me for signing. (I am fortunate that I have a copy of the application with the narrative.) An enclosed copy of a letter dated April 5, 1990, states that some photographs were sent with the failed application for the Rangerette Showcase.

I hope these new pictures of the building are O.K.; if not, let me know.

Best regards and Happy Memorial Day,

Enc.





KILGORE COLLEGE ADMINISTRATION BUILDING H.M DEDICATION

Dedication of Marker

TO: The people whose unselfish foresight turned the providence of the East Texas Oil Field to include the lofty ideals of higher education,

TO: The people who had the initiative and leadership to locate this college in Kilgore,

TO: The educators past and present, AND,

TO: The students, past, present and future,

I, on behalf of the Texas Historical Commission and the Gregg County Historical Commission, hereby dedicate this Official Texas Historical Marker, a Recorded Texas Historic Landmark commemorating the Kilgore College Administration Building.