

John Ben Shepperd earned many acco

The late John Ben Shepperd, a leading political and civic activist for four decades, will be honored by Gladeites and other Texans during a ceremony dedicating an official Texas Historical State Marker in his honor.

The dedication will be 1 p.m. Saturday, May 2, in front of First State Bank.

It seems only fitting that the man who created the Texas Historical Commission highway marker program, responsible for thousands of markers within the state, would earn his own marker so soon after his death. Shepperd died in 1989.

The Gladewater native earned two degrees at the University of Texas, the last a law degree in 1941. His Longview law practice was interrupted by a two-year Army stint during World War II. Afterward, he emerged on the scene as a state and national president of the Jaycees. He held his first political office as Gregg County commissioner Precinct 2, when appointed in 1946 to finish his father's unexpired term.

Four years later, at age 34, he was appointed Texas secretary of state.

Shepperd was elected as the 41st attorney general of Texas from 1953-57. According to *The Handbook of Texas*, he quickly became a leader in the dominant conservative wing of the Democratic party and easily won his office two times.

His years as attorney general were a time of school integration conflicts, labor unrest, disputes over state and federal rights and sharp differences between state and national Democratic Party leaders.

One of Shepperd's most famous cases was against bossism and corruption in Duval County, a fight he began as secretary of state when he threw out the election of a district judge. His investigations as attorney general led to 300 indictments against school and county officials, including George Parr, the "Duke of Duval County."

Shepperd also exposed a major cigarette tax swindle and defended Texas against other states challenging the constitutionality of the 1953 congressional act returning the tidelands to state ownership. In 1956 he was chosen president of the National Association of Attorneys General.

Shortly after his re-election in 1954, the state was rocked by scan-

The public is invited to attend a Texas Historical Marker dedication ceremony at 1 p.m. Saturday, May 1, in front of First State Bank.

dittees led to indictments and to reform of the state's insurance department.

But the scandals had rocked establishment politics in Texas and provided fodder for enemies of Shivers' administration. Shepperd was thought by many to be the logical heir to the governor's office, but on April 6, 1956, he ruled out not only a race for governor but also the almost certain prospect of a third term as attorney general.

When his term ended in January 1957, Shepperd moved to Odessa to become general counsel to the Odessa Natural Gasoline Company and to form Shepperd and Rodman, a corporate legal firm.

But, it was in historical preservation, education and economic development that Shepperd made his mark in later years. As chairman of the Texas Historical Society Committee he created the official highway historical markers program.

One of his last major projects was the John Ben Shepperd Public Leadership Forum, based at the University of Texas of the Permian Basin and aimed at encouraging young people to become public leaders.

He was named three times as one of the outstanding young men in Texas and as one of the nation's 10 outstanding young men of 1949 in a group that included future President Gerald R. Ford and future Senator Charles Percy. Although he voluntarily ended a promising career as an elected official at age 41, Shepperd remained much in demand as a political advisor to his close friend, President Lyndon B. Johnson, and to many other officials.

His years in public life found him in service on a number of boards and commissions, including the U.S. Jaycees Foundation, Texas Historical Foundation, Texas State Library & Archives Commission, Ector and Gregg county historical commissions, Heritage of Odessa Foundation, Gladewater Heritage Society, University of Texas Ex Students Association and Board of Visitors M.D. Anderson Cancer Center Foundation.

He also served as the president and/or director of the U.S. Jaycees, Gladewater, East Texas, Odessa and West Texas chambers of commerce.

Shepperd's honors and awards were numerous during his lifetime. Among the most prestigious are: Gladewater's Jaycee Distinguished Service Award (three times); outstanding citizen of Gladewater and Odessa; and the Ruth Lester Award for Meritorious Service in Historic Preservation (Mrs. Lester was a driving force in Jefferson's historic preservation effort). He was named Texas' Outstanding Citizen from Texas Exchange Clubs in 1977; Texan of the Year 1984, presented by the Texas Legislative Conference and Texas Chambers of Commerce; and Outstanding West Texan 1987, presented by the West Texas Chamber of Commerce.

He authored seven books and after the death of his youngest son, John Ben Jr., began a Texana collection named for his memory at Gladewater's Lee Public Library.

He and his wife, the former Mamie Strieber of Yorktown, had four children: Alfred, John Ben Jr. (killed in 1970) and twin daughters Marianne and Suzanne.



John Ben Shepperd, right, honorary U.S. Jaycees member that he was often called Texan Lyndon B. Johnson.

Doc Shepperd's business

The Shepperd family's history

ruption in Duval County, a fight he began as secretary of state when he threw out the election of a district judge. His investigations as attorney general led to 300 indictments against school and county officials, including George Parr, the "Duke of Duval County."

Shepperd also exposed a major cigarette tax swindle and defended Texas against other states challenging the constitutionality of the 1953 congressional act returning the tidelands to state ownership. In 1956 he was chosen president of the National Association of Attorneys General.

Shortly after his re-election in 1954, the state was rocked by scandal in its veterans land program, administered by the commissioner of the General Land Office, Bascom Giles. Governor Allan Shivers and Shepperd both served on the Veterans Land Board under Giles' chairmanship.

Neither were implicated in the abuse of the program by land speculators, and the investigation by Shepperd, together with legislative committees and grand juries, led to reform of the program. Giles was indicted, convicted and served a prison term for his role in the land schemes.

Shepperd headed another investigation involving state regulation of insurance companies accused of fraudulent activities. Again, investigations by the attorney general, grand juries and legislative com-

voluntarily ended a promising career as an elected official at age 41. Shepperd remained much in demand as a political advisor to his close friend, President Lyndon B. Johnson, and to many other officials.

lection named for his memory at Gladewater's Lee Public Library.

He and his wife, the former Mamie Strieber of Yorktown, had four children: Alfred, John Ben Jr. (killed in 1970) and twin daughters Marianne and Suzanne.

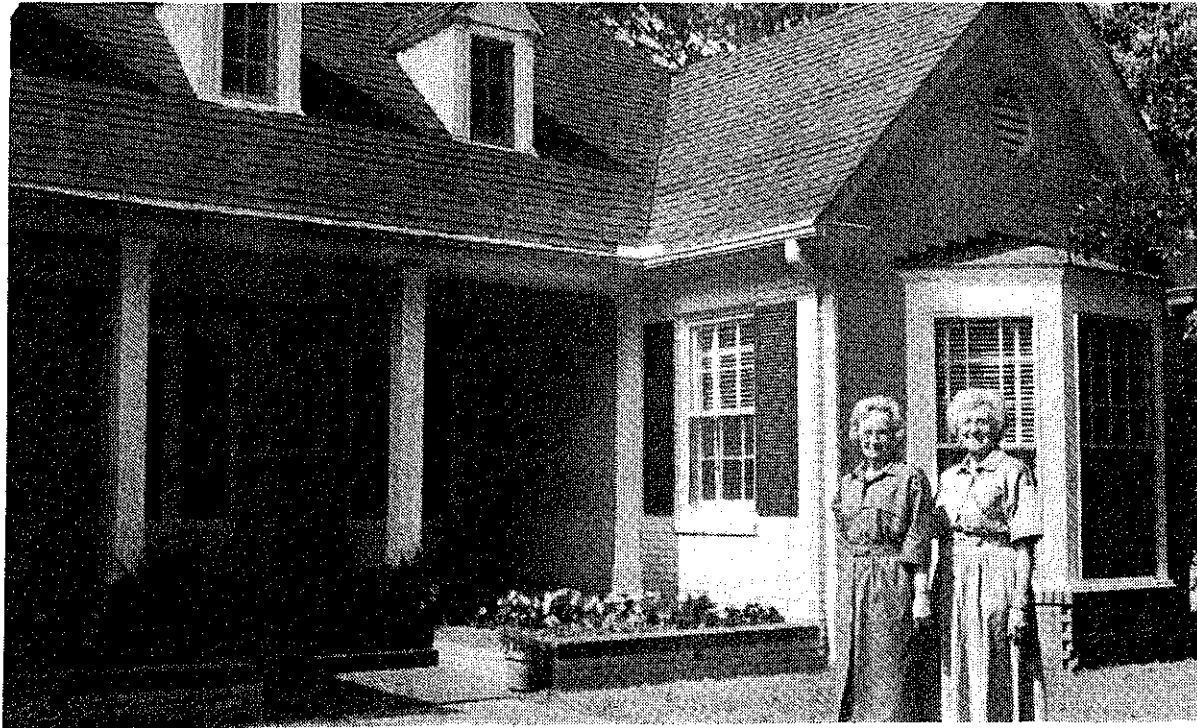
**John Ben Shepperd, r
orary U.S. Jaycees me
that he was often cal
Texan Lyndon B. John**



Courtesy photo

On the air

John Ben with his mother, Berthal, doing a live radio broadcast. The studio looks much like the former radio station located in the Lee Building in Gladewater. Mrs. Shepperd, like her husband "Doc," was well known in Gladewater and lived here until her death in 1975.



Mirror photo/Brenda Bedgood

Historical tour

Following the dedication of a state historical marker to the memory of John Ben Shepperd on Saturday, May 2, Elizabeth Osteen and Nauty Byrd Mayer, co-chairmen of the Gladewater Historical Society's Archives and Marker Committee, welcome the public to the John Ben Shepperd home on Country Club Road. Hours will be from 3 to 5 p.m. Tour tickets are available at the Chamber of Commerce at \$5 per person. Proceeds will benefit the society's archival and preservation projects.

Doc She business

The Shepperd family's history in East Texas goes back to pre-War days, when the family journeyed to Gladewater, Tennessee and Alabama. John Shepperd likely patterned his career in public service after his father's Gladewater business, civic and governmental leader.

His father, Alfred Fulton Shepperd, was born in Gladewater in 1885, the son of John Shepperd and Ella Shepperd. Following business studies at Commercial College, Doc Shepperd worked as a rural mail carrier from 1905 to 1989, delivering mail south of the Sabine River by buggy and horseback.

Doc's first business venture was a livery stable, located where the Gladewater Mirror office is today. He rented horses, carriages and wagons.

By 1912, Shepperd began a hardware business, selling everything from building materials to farm equipment, furniture, automobiles and caskets. He was the town's only funeral director and provided a hearse pulled by a matched pair of black horses. The filling station in front of his home was the first in Gladewater and consisted of a hand-cranked gasoline pump and barrel of kerosene.

Home tour begins aft dedication

From 3 to 5 p.m. public tours of the Shepperd home will inaugurate the first Gusher Days Home Tour activity. The tour will be on Country Club Road.

Tickets for the tour are available at the Chamber of Commerce for \$5 per person. Proceeds will benefit the Gladewater Heritage Society's archival and preservation projects.

Sheppard honored Marker memorializes local Secretary of State

Gladewater will commemorate the accomplishments of its most famous native son with an official Texas Historical Marker.

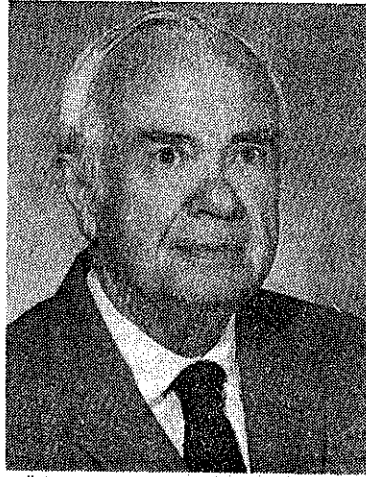
The late John Ben Shepperd, Texas Secretary of State, state attorney general and first chairman of the Texas Historical Commission's highway historical marking program, will be honored with his own marker Saturday, May 2, as part of Gusher Days activities.

The marker, to be unveiled in downtown Gladewater on the grounds of the First State Bank at 1 p.m., is sponsored by the Gladewater Heritage Society, the Texas Historical Commission and the Gregg County Historical Commission.

Following the dedication, public tours of the John Ben Shepperd home on Country Club Road will inaugurate the first Gusher Days Heritage Home Tour activity. Tickets are available at the Gladewater Chamber of Commerce for \$5 per person. Proceeds will benefit the local heritage society's archive and preservation projects.

Shepperd served as state secretary of state and attorney general during the 1950s. He was state and national president of the Jaycees and was honored as an Outstanding Young Man of America in 1949.

He was the first chairman of the Texas Historical Commission's highway historical marking pro-



JOHN BEN SHEPPERD

gram which celebrates its 30th anniversary this year. He was organizing chairman of the Texas Arts Commission in 1966.

After leaving public office, Shepperd served on numerous boards and commissions by appointment of four U.S. presidents and seven Texas governors. He was noted for his volunteer work for business, education, cultural, historical and tourism organizations.

Numerous awards and recognitions acknowledged Shepperd's contributions to his state. He was named 1984 Texan of the Year by the Texas Chambers of Commerce and 1977 Texas Outstanding Citizens by the Texas Exchange Clubs.



BPW challenge to help Heritage Society

BPW members have challenged other civic/social clubs to meet or exceed the club's \$50 gift to the Heritage Society. Club president Kristie McBride presented the check to Mildred Barker, chairman of the Heritage Society executive board. Betty Chronister a member of BPW and the Heritage Society suggested the challenge.

Club challenges others to contribute

The Gladewater Business and Professional Women's Club has issued a challenge to other civic and social groups to meet/beat its \$50 contribution to the Gladewater Heritage Society.

The challenge came about when Betty Chronister, a member of BPW and the Heritage Society, told about the upcoming celebration planned in honor of the memory of John Ben Shepperd.

Under the auspices of the Heritage Society an official State of Texas Historical Marker commemorating Shepperd will be dedicated May 2. The marker will be prominently located downtown Gladewater in the seated, landscaped area

in front of First State Bank.

It was Shepperd's dream that Gladewater establish a local archival collection for the preservation of important photographs, family papers, histories of oilboom independents, and a repository for significant collections concerning the history of Gladewater.

The Society plans to begin this collection by microfilming and reproducing selected portions of Shepperd's memorabilia which pertain to Gladewater.

The dedication ceremony is planned during Gusher Days. Following the dedication ceremony there will be a tour open to the

public of the Shepperd home on Country Club Rd. 3 to 5 p.m.

Donors of \$50 or more will be invited to a private party prior to the tour.

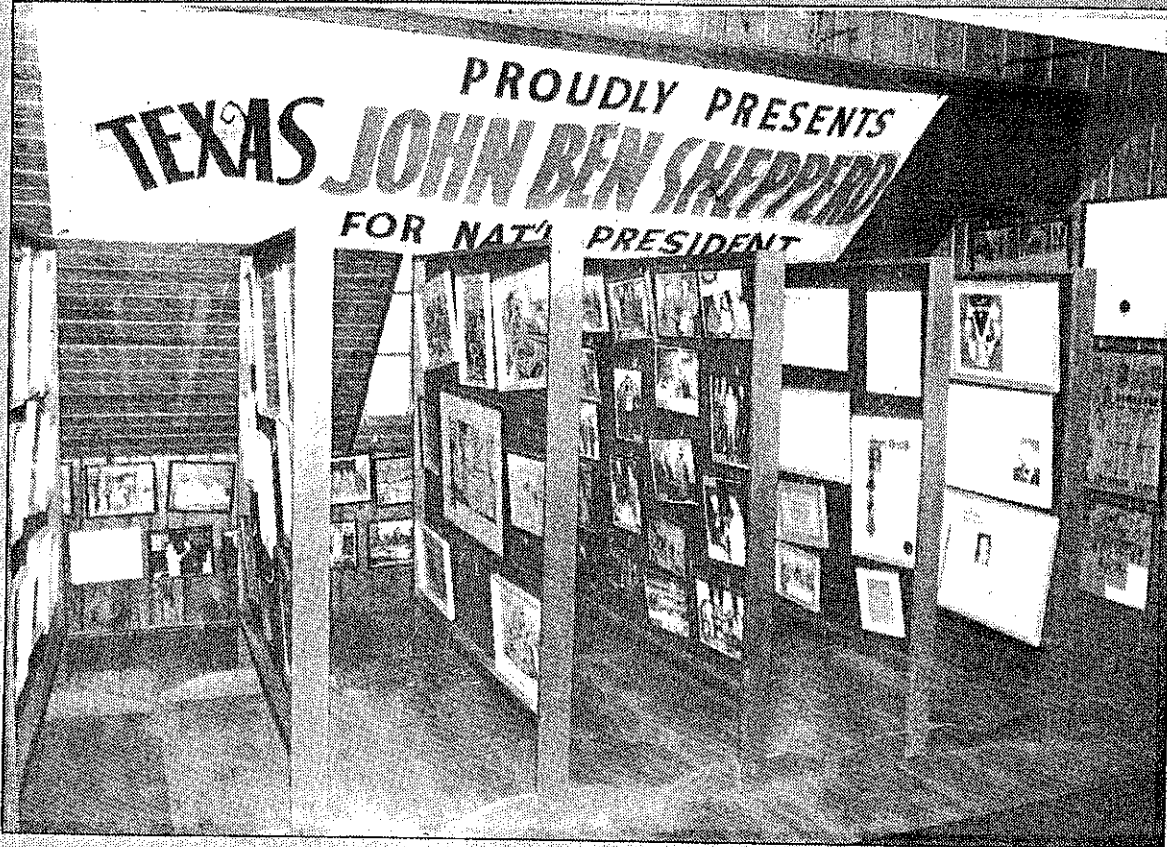
Tour tickets are on sale at \$5 per person and are available from any society member or the chamber of commerce.

Contributions to the Heritage Society are tax deductible.

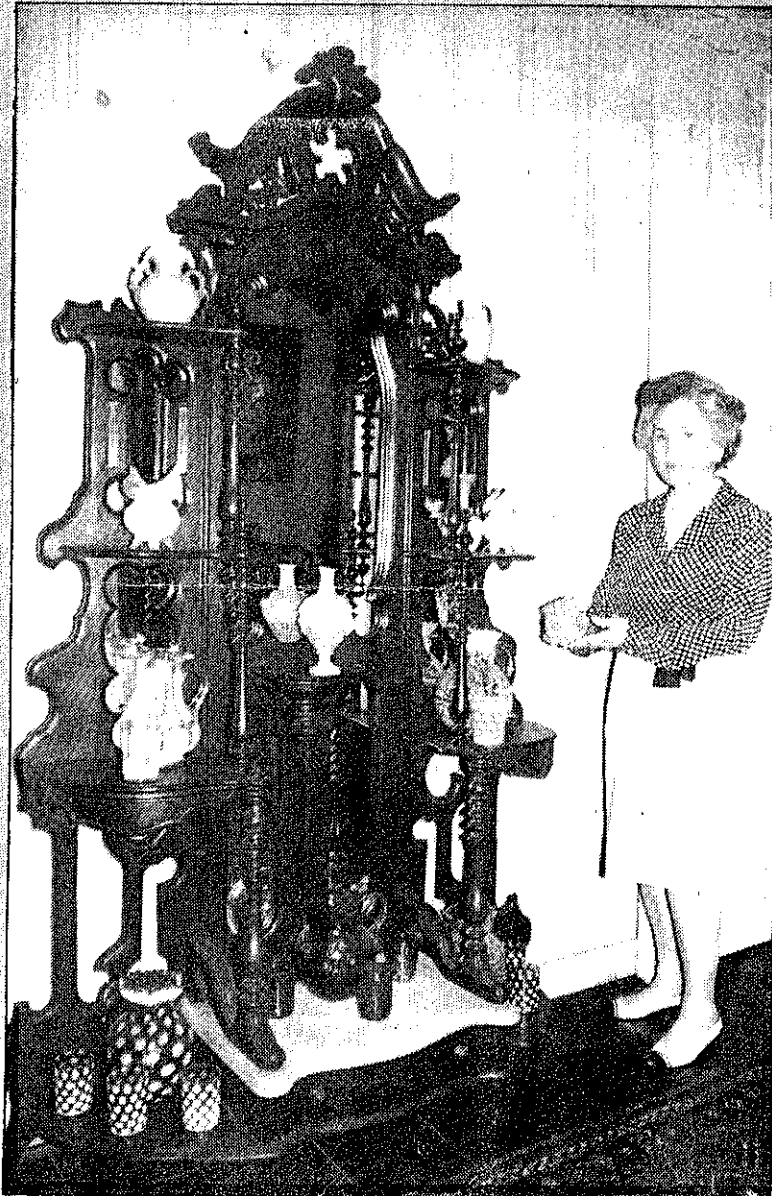
The Society is asking for financial help to underwrite the marker, sponsor the dedication ceremonies and raise funds for other heritage endeavors proposed by Shepperd.

A permanent donors' scroll will be placed in the Gladewater Archives.

History in the marking



The late John Ben Shepperd, a Gladewater native, will be remembered during a special Texas Historical Marker dedication Saturday, May 2, in front of First State Bank. The event, which coincides with the town's East Texas Gusher Days festival, honors the former Texas Secretary of State and Attorney General who died in 1989. The Shepperd home on Country Club Road will be opened for tours and tickets are available at the Chamber of Commerce for \$5 each. Pictured above is a small part of the home's upstairs, loaded with Shepperd memorabilia. At right, Mrs. Mamie Shepperd displays a few pieces of John Ben's mother's American antique glassware collection.



GLADEWATER HERITAGE SOCIETY

405 Phillips Drive ° Gladewater ° Texas ° 75647-4831

April 21, 1992

Delivered by Gem
Merchem 4-21-92

OFFICERS

President
Fredalene Clark

First Vice President
Elizabeth Osteen

Second Vice-President
Harold Wells

Secretary
Nauty Byrd Mayer

Treasurer
Virginia Baker

Ms. Frances Rickard, Director
Local History Programs
Texas Historical Commission
P.O. Box 12276
Austin TX 78711

Dear Ms. Rickard:

We are most grateful to you and your staff for helping us with the Official State of Texas Historical Marker commemorating the life of our most distinguished native son, John Ben Shepperd. We are especially proud that we can unveil John Ben's marker during the thirtieth anniversary year of the marking program.

EXECUTIVE BOARD

Mildred Barker

Mozelle Berryhill

Howard LeBus

Marie Molina

Cynthia Beeman was especially conscientious and timely in routing the inscription and getting it approved. We really appreciate her working with us on this quick deadline and know how much extra effort your office expended.

We extend a very special invitation to you, Cynthia, and other members of your staff to join us for the dedication ceremonies which will take place Saturday, May 2, 1992, 1:00 p. m., in downtown Gladewater in front of the First State Bank.

Following the program, Mrs. John Ben Shepperd is hosting a champagne reception at 2:00 p.m. in the Shepperd home for dignitaries and donors. The house was built in the mid-1930s by John Ben's parents and has many interesting artifacts, including an upstairs "museum" on his career which was compiled by his mother.

We hope you can join us for all or part of the activities. So you can be properly recognized during the program, please call (903-983-2554) to let us know if you will honor us with your attendance. We look forward to seeing you in Gladewater.

Sincerely,

Elizabeth Osteen
Vice President

Nauty Byrd Mayer
Secretary

Mildred Barker
Executive Board

cc: Curtis Tunnell, Texas Historical Commission

✓ Dr. Norman Black, Gregg County Historical Commission

April 21, 1992

*file copy
sent to all members
of TX Hist. Comm.
del. by Gem Meacham
4-21-92*

«DATA TX Hist. Comm.»
«title» «firstname» «lastname»
«address1»
«IF address2»«address2»
«END IF»«city», «state» «zipcode»

Dear «salutation»:

We are most grateful to the Texas Historical Commission for granting us an Official State of Texas Historical Marker commemorating the life of our most distinguished native son, John Ben Shepperd. We know it is unusual for a marker concerning an individual to be approved so soon after his death and we appreciate your recognition of the significance of John Ben's achievements.

We extend a very special invitation to members of the Commission to join us for the dedication ceremonies which will take place Saturday, May 2, 1992, 1:00 p. m., in downtown Gladewater in front of the First State Bank.

We are especially proud that we can unveil John Ben's marker during the thirtieth anniversary year of the marking program which he helped launched.

Following the program, Mrs. John Ben Shepperd is hosting a champagne reception at 2:00 p.m. in the Shepperd home for dignitaries and donors. The house was built in the mid-1930s by John Ben's parents and has many interesting artifacts, including an upstairs "museum" on his career which was compiled by his mother.

It will be an exciting and busy day for Gladewater and we hope you can join us for all or part of the activities. Please call (903-983-2554) to let us know if you are planning to attend so you can be properly recognized.

We look forward to hearing from you soon and hope that you can honor us by participating on the program.

Sincerely,

Elizabeth Osteen
Vice President

Nauty Byrd Mayer
Secretary

Mildred Barker
Executive Board

Gladewater News

Wednesday, April 22, 1992 Gladewater, Texas

Dedication Saturday

Tieman H. Dippel Jr. of Brenham will deliver the keynote at dedication ceremonies for the official Texas Historical Marker honoring John Ben Shepperd.

The marker unveiling is Saturday at 1 p.m. at First State Bank. A tour of the Shepperd home on Country Club Drive follows at 3 p.m.

Dippel's business interests encompass banking, law, real estate and insurance. He is noted throughout the state as a volunteer for arts, education, business and youth organizations. He is recognized as an independent political leader and serves on the board for the non-partisan Texans for Term Limitations.

Dippel is chairman of Brenham Bancshares, Inc. and a board member for Blue Cross and Blue Shield of Texas. He serves as a director for the Houston branch of the Fed-



TIEMAN DIPPEL JR.

eral Reserve Bank.

Shepperd was a hero and mentor for Dippel. They served together in the Texas Arts Alliance, Texas Lyceum, East Texas Chamber of

See DIPPEL, Page 2

Dippel: Shepperd was mentor

From Page 1

Commerce and U.T. Ex Students Association.

In his booth *The New Legacy*, Dippel wrote, "Shepperd was the state's organizational genius, having formed countless associations and commissions for the betterment of Texas."

Dippel is a former member of the Texas Arts Commission and was honored as a Rising Star of Texas by "Texas Business" magazine and as a Texas Trailblazer by "Ultra" magazine. He has also been featured in articles appearing in "Texas Monthly."

Also participating in the marker dedication are Gladewater Mayor Jackie Wood, Gregg County Historical Chairman Dr. Norman Black and former Texas Historical Commission member Virginia Long.

Nauty Byrd Mayer, secretary of the Gladewater Heritage Society, will serve as master of ceremonies. Gladewater natives Woodrow Wood and Carl Everett will also participate. John Ben Shepperd's grandchildren, Tina Shepperd Moore, John Shepperd, Anne Blanton and Lara McCarver will take part.

The marker is sponsored by the

Gladewater Heritage Society,
Gregg County Historical Commission and Texas Historical Commission.

Gladewater Heritage Society
East Texas Gusher Days
Gregg County Historical Commission
Texas Historical Commission
INVITE YOU TO
The Historical Marker Dedication Honoring
JOHN BEN SHEPPERD
1:00 p.m., First State Bank, 200 N. Main

earned many accolades in his lifetime

l a Texas Histori-
ony at 1 p.m. Sat-
State Bank.

years in public life found
service on a number of
and commissions, including
Jaycees Foundation, Texas
Foundation, Texas State
& Archives Commission,
and Gregg county historical
ssions, Heritage of Odessa
ation, Gladewater Heritage
, University of Texas Ex
ts Association and Board of
s M.D. Anderson Cancer
Foundation.

also served as the president
director of the U.S. Jaycees,
water, East Texas, Odessa
est Texas chambers of com-

pperd's honors and awards
umerous during his lifetime.
; the most prestigious are:
water's Jaycee Distinguished
Award (three times); out-
g citizen of Gladewater and
; and the Ruth Lester Award
rtritorious Service in Historic
vation (Mrs. Lester was a
force in Jefferson's historic
vation effort). He was named
Outstanding Citizen from
Exchange Clubs in 1977;
of the Year 1984, presented
Texas Legislative Confer-
and Texas Chambers of
erce; and Outstanding West
1987, presented by the West
Chamber of Commerce.

authored seven books and
ne death of his youngest son,
Ben Jr., began a Texana col-
named for his memory at
water's Lee Public Library.

and his wife, the former
e Strieber of Yorktown, had
children: Alfred, John Ben Jr.
in 1970) and twin daughters
ine and Suzanne.



Courtesy photo

Presidential presentation

John Ben Shepperd, right, presented President Harry Truman a "lucky" Resistol hat and honorary U.S. Jaycees membership in 1947. Shepperd became such an active and notable Jaycee that he was often called "Mr. Jaycee." He was an advisor to several presidents, including Texan Lyndon B. Johnson.



Doc Shepperd was prominent businessman, civic leader here

The Shepperd family's history in

Doc purchased his first acreage

Jr., began a Texana column named for his memory at Water's Lee Public Library. and his wife, the former Strieber of Yorktown, had children: Alfred, John Ben Jr. (in 1970) and twin daughters one and Suzanne.



Courtesy photo

ing a live radio broadcast from a former radio station tower. Mrs. Shepperd, like her husband, lived in Gladewater and lived



Mirror photo/Brenda Bedgood

John Ben Shepperd on the cover of the Gladewater Historical Society's archival and

Courtesy photo

Presidential presentation

John Ben Shepperd, right, presented President Harry Truman a "lucky" Resistol hat and honorary U.S. Jaycees membership in 1947. Shepperd became such an active and notable Jaycee that he was often called "Mr. Jaycee." He was an advisor to several presidents, including Texan Lyndon B. Johnson.

Doc Shepperd was prominent businessman, civic leader here

The Shepperd family's history in East Texas goes back to pre-Civil War days, when the family journeyed to Gladewater from Tennessee and Alabama. John Ben Shepperd likely patterned his life of public service after his father, a Gladewater business, civic and governmental leader.

His father, Alfred Fulton "Doc" Shepperd, was born in Gladewater in 1885, the son of John Henry Shepperd and Ella Mackey. Following business studies at Tyler Commercial College, Doc was a rural mail carrier from 1904 until 1989, delivering mail south of the Sabine River by buggy and on horseback.

Doc's first business venture was a livery stable, located where *The Gladewater Mirror* office stands today. He rented horses, buggies and carriages.

By 1912, Shepperd began a hardware business, selling everything from building materials to farm equipment, furniture, automobiles and caskets. As the town's only funeral director he provided a hearse pulled by a matched pair of black horses. The filling station in front of his store was the first in Gladewater. It consisted of a hand-operated gasoline pump and barrel of oil.



A.F. "DOC" SHEPPERD

He opened "A.F. (Doc) Shepperd-General Merchandise" in 1922 and sold groceries, meats, patent medicines, piece goods, hats, clothing and feed.

Doc Shepperd wed the former Berthal Phillips Dec. 30, 1912. His wife, born Dec. 9, 1886 to Ben F. Phillips and Mattie Fambrough of West Mountain, had worked as a school teacher, bookkeeper and court reporter before her marriage.

The Shepperds' first son, John Ben, was born Oct. 19, 1915. A brother, Alfred Edgar, followed five years later, Feb. 22, 1920.

Doc purchased his first acreage in 1916 and eventually owned land in three counties. He loved farming and raised cotton, feed grain and livestock until his death. His original purchase is now the site of Gladewater's municipal airport, "Doc Shepperd Field."

Doc was one of the founders of the Gladewater Merchant's Association, as well as a charter member of the Chamber of Commerce and Lions Club. He was a Mason and a Knight of Pythias and served on the local school board from 1919 until 1928.

He served as a Gregg County commissioner for 23 years and was recognized by many as the prime mover in the drive for better roads. At one point his precinct boasted more paved roads than any other in the state, thus is reputation as the "Father of Good Roads in Gregg County."

Doc Shepperd lived to see many of his eldest son's civic and political achievements. Both of the Shepperds died in Gladewater are buried in a private family cemetery on the Shepperd estate. Mr. Shepperd died in November 1957; Mrs. Shepperd died in April 1975.

Information taken from the book *Notable East Texans* by Archie P. McDonald and Ronald L. Spiller, Eakin Press, Austin, Texas.

Home tour begins after dedication

From 3 to 5 p.m. public tours of the Shepperd home will inaugurate the first Gusher Days Heritage Home Tour activity. The home is on Country Club Road.

Tickets for the tour are available at the Chamber of Commerce at \$5 per person. Proceeds will benefit the Gladewater Heritage Society's archival and preservation projects.

Gladewater: Historical, hilarious

A couple of important events are taking place Saturday at Gladewater's East Texas Gusher Days.

One event is historical. The other is hysterical.

First, at 1 p.m. Saturday, Gladewater will honor the memory of one of its most famous native sons, John Ben Shepperd, with the unveiling of an official Texas Historical Marker.



**Van
Craddock**

The ceremony, to be held on the grounds of the First State Bank building in downtown Gladewater, is being sponsored by the Gladewater Heritage Society, the Gregg County Historical Commission and the Texas Historical Commission.

Shepperd, who died in March 1990 at the age of 74, was one of those rare politicians who are remembered as "public servants."

Appointed Texas secretary of state at age 34, Shepperd was Texas attorney general in 1953-56. He will forever be remembered as the man who obtained 300 indictments against officials in Duval County, including the "Duke of Duval" himself, George Parr.

But folks in Gladewater, where Shepperd was born in 1915, had always known he'd make something of himself. After getting his law degree from the University of Texas, Shepperd in 1947-48 served as Jaycees' national president.

In 1949, the East Texan was named one of the country's "Ten Outstanding Young Men" (also honored that year was a fellow from Michigan, Gerald Ford).

Shepperd later chaired the Texas Industrial Development Commission, the Texas Commission on the Arts and the Texas State Library and Archives Commission.

Involved in education, historical preservation, business and cultural organizations, Shepperd in 1984 was named "Texan of the Year" by the Texas Chambers of Commerce for his many contributions.

Upon Shepperd's death, Texas Congressman J.J. Pickle noted that "John Ben was a factory of ideas. And while others were talking, he got things done. He symbolized the 'can-do' spirit of Texas."

It's certainly appropriate that a state historical marker should be dedicated to John Ben Shepperd. He was first chairman of the Texas Historical Commission's highway historical marking program (that program, by the way, is celebrating its 30th anniversary in 1992).

After the marker dedication, public tours of the John Ben Shepperd home will be given from 3 to 5 p.m. Tour tickets are \$5 (proceeds benefit the society's projects) and are available at the Gladewater Chamber of Commerce office.

GUSHER DAYS!

Gladewater festival recalls wild oil-boom times

By Van Craddock
Entertainment Editor

GLADEWATER — East Texas Gusher Days is turning back the clock to Gladewater's 1930s' oil-boom era with numerous events planned over the weekend.

A Gusher Days Kickoff Luncheon is 11 a.m.-1:30 p.m. today at City Hall, with live entertainment by Dr. Jody Syring.

The Gusher Day Players present their new three-act comedy, "KHOM in Gusherville," 7:30 p.m. today and Saturday in the Gladewater High School auditorium (tickets at the door are \$6 reserved, \$5 general admission).

Schafer's 20th Century Carnival

on Pacific Street (next to Broadway school) is open until midnight today and Saturday.

The Gladewater Christian Men's Alliance hosts a 7 a.m. Saturday pancake breakfast in the 100 block of Pacific with the 8 a.m. Gusher Gallop one-mile walk/run and the 8:30 a.m. 3.2-mile run scheduled (race-day registration is \$11).

Downtown activities Saturday begin at 10 a.m. with arts and crafts, food concessions and exhibitors set up in the central business district.

Pioneer Luncheon

The Annual East Texas Gusher Days Parade is 11 a.m. with an antique-auto display set for 11:30 a.m.-2 p.m.

on Center Street.

Another highlight will be the annual Pioneer Luncheon (\$7.50 per ticket) set for noon Saturday in the First Methodist Church's Jeter Hall, 217 W. Quitman.

After the luncheon, a Texas Historical Marker will be unveiled at 1 p.m. in front of the First State Bank. The marker honors Gladewater native John Ben Shepperd, former Texas secretary of state and attorney general.

Also scheduled is the 1:30 p.m. "Brownie Bowl Lick-Off" (lip-licking finals are set for 4:30 p.m.) and an 8 p.m. downtown street dance.

For more information call 845-2626.

14-A

SUNDAY, April 26, 1992, Longview News-Journal

Gladewater returns to days of oil boom during ET Gusher Days

From Staff Reports

GLADEWATER — This city returns to the 1930s' oil-boom days this week with the Seventh Annual East Texas Gusher Days.

On Wednesday, Schafer's 20th Century Carnival will set up on East Pacific Street beside Broadway school and will remain open through May 3.

A Friday kickoff luncheon will be held 11 a.m. Friday at City Hall and will feature Gladewater's singing veterinarian, Jody Syring.

The popular Gusher Days Players are introducing a new three-act comedy titled "KHOM in Gusherville." The play, about a radio station in a small oil town, will be presented 7:30 p.m. Friday and Saturday in the Gladewater High School Auditorium. Advance reserved tickets are \$5 and general admission is \$4. Tickets at the door will be \$6 and \$5, respectively.

Saturday events start with a 7

a.m. pancake breakfast in the 100 block of East Pacific and offered by the Gladewater Christian Men's Alliance.

Also Saturday there'll be an 8 a.m. One-Mile Walk/Run and an 8:30 a.m. 5K Gusher Gallop (pre-registration can be done at the Gladewater Chamber of Commerce and is \$9. On race day, registration will be \$11).

Downtown activities begin at 10 a.m. Saturday with arts and crafts, food concessions and exhibitors. The annual East Texas Gusher Days Parade is set for 11 a.m. and there'll be an antique auto display 11 a.m.-2 p.m. on Center Street.

A highlight of the weekend will be the Saturday Annual Pioneer Luncheon at the First Methodist Church. Following the luncheon the Gladewater Heritage Society will honor the late Gladewater native John Ben Shepperd, former Texas secretary of state and attorney general, with the unveiling of

a Texas Historical Marker at 1 p.m. in front of the First State Bank.

Following the dedication, the Shepperd home on Country Club Road will be open 3-5 p.m. for tours. Tour tickets are available from chamber offices.

Another fun activity Saturday will be the "Brownie Bowl Lick-Off, which starts at 1:30 p.m. and ends with the finals at 4:30 p.m.

Also part of East Texas Gusher Days will be a Saturday tennis tournament at the Glade Tennis and Swim Club and an 8 p.m. downtown street dance.

For more information about East Texas Gusher Days, call the Gladewater Chamber of Commerce at 845-2626.

When the East Texas Oil Field was discovered in 1930-31, tiny Gladewater went from a population of 500 to more than 7,000. At the height of the oil boom there were 400 producing wells and 26 refineries in the city.

Join the Fun! at the Seventh Annual East Texas Gusher Days!



GUSHER DAYS

Friday-Saturday-Sunday — May 1-2-3

Historic Gladewater - The Antique Capital of East Texas!

Continuous Entertainment in Downtown Gladewater

5-K Gusher Gallop / 1-Mile Fun Run

Saturday 8am (Fun Run), 8:30am (Gallop), 200 E. Commerce. \$9 advance, \$11 at the start. Trophies for winners, T-shirts for all participants.

"KHOM in Gusherville"

Original comedy. Friday, Saturday, 7:30pm at Gladewater High School. Advance Tickets \$4 Balcony, \$5 Reserved (\$1 Higher At the Door).

Gusher Days Kickoff Luncheon

Friday 11-1:30, Gladewater City Hall. Live musical entertainment.

Christian Men's Association Pancake Breakfast

Saturday, 7am at Dirty Neck Jessie's (E. Pacific). \$2 per person.

Arts & Crafts / Food Concessions

Saturday 10-5, Sunday 12-5. Downtown Gladewater.

Brownie Bowl Lick-Off

All day Saturday at Glory Bee Baking Company, Main Street.

Gusher Days Parade

11am Saturday, featuring Antique Autos.

Schaffer's 20th Century Carnival

Wednesday through Sunday on East Pacific Street.

Antique Autos

On display Saturday on Center Street.

Polo Matches

Longview vs. Willow Bend, Saturday 1pm at Rodeo Grounds. General admission \$5.

Pioneer Luncheon

Saturday 11:30am at First United Methodist Church.

John Ben Shepperd Historical Marker Dedication

First State Bank, 1pm Saturday.

Tour of John Ben Shepperd Home and Museum

Country Club Road, 2pm Saturday. \$5.

Gusher Days Tennis Tournament

Saturday and Sunday at Glade Tennis and Swim Club.

Dirty Neck Jessie's Street Dance and Saloon

E. Pacific. Dance 8pm Saturday. Saloon open Saturday only.

Bandstand • Live Entertainment • Demonstrations • More!!!

For More Information call

The Gladewater Chamber of Commerce, (903) 845-2626

DEDICATION

of an

OFFICIAL TEXAS HISTORICAL MARKER

honoring

JOHN BEN SHEPPERD

Former Secretary of State and Attorney General

State of Texas

on

Saturday, May 2, 1992

1:00 p.m.

at

The First State Bank

200 N. Main

Gladewater, Texas

Sponsored by

THE GLADEWATER HERITAGE SOCIETY

THE GREGG COUNTY HISTORICAL COMMISSION

THE TEXAS HISTORICAL COMMISSION

during the

EAST TEXAS GUSHER DAYS

MARKER DEDICATION PROGRAM

Mrs. Nauty Byrd Pelphrey Mayer Master of Ceremonies
*Member,
Gregg County Historical Commission
Gladewater Heritage Society*

Mr. Carl Everett.....Invocation

John Ben Shepperd GrandchildrenPledges of Allegiance
U. S. Flag
* Texas Flag

Mr. Jackie Wood.....Welcome to Gladewater
*Mayor,
City of Gladewater*

Mrs. Mayer.....Introductions

Mr. Woodrow WoodGrowing Up with John Ben

Mr. Tieman H. Dippel, Jr.....Tribute and Reflection
*Past President,
East Texas Chamber of Commerce
Founder, The Texas Lyceum*

.....Dedication and Unveiling

Dr. Norman Black
*Chairman,
Gregg County Historical Commission*

Mrs. Virginia Long
*Former Member,
Texas Historical Commission*

Mrs. John Ben Shepperd

* "Honor the Texas Flag.
I pledge allegiance to thee,
Texas, one and indivisible."

OFFICIAL TEXAS HISTORICAL MARKER



JOHN BEN SHEPPERD
(October 19, 1915-March 8, 1990)

A NATIVE OF GLADEWATER, JOHN BEN SHEPPERD BEGAN A LAW PRACTICE IN LONGVIEW SOON AFTER HIS GRADUATION FROM THE UNIVERSITY OF TEXAS LAW SCHOOL IN 1941. AFTER SERVICE IN WORLD WAR II, HE GAINED PROMINENCE AS NATIONAL PRESIDENT OF THE JAYCEES. HIS PUBLIC SERVICE CAREER BEGAN IN 1946, WHEN HE WAS APPOINTED TO FILL HIS FATHER'S UNEXPIRED TERM AS COUNTY COMMISSIONER. GOVERNOR ALLAN SHIVERS APPOINTED SHEPPERD SECRETARY OF STATE IN 1950. HE WAS ELECTED ATTORNEY GENERAL IN 1952 AND WAS REELECTED IN 1954. AS ATTORNEY GENERAL, HE ATTACKED POLITICAL CORRUPTION IN DUVAL COUNTY AND THE MISUSE OF STATE VETERANS LAND FUNDS.

AFTER RETIRING FROM PUBLIC OFFICE IN 1957, SHEPPERD MOVED TO ODESSA WHERE HE PRACTICED LAW AND SUPPORTED NUMEROUS CIVIC AND CHARITABLE ENDEAVORS. HE WAS APPOINTED TO A NUMBER OF STATE AND NATIONAL BOARDS AND COMMISSIONS, INCLUDING THE TEXAS STATE HISTORICAL SURVEY COMMITTEE (NOW TEXAS HISTORICAL COMMISSION). HE WAS THE DRIVING FORCE IN THE GROWTH AND DEVELOPMENT OF THE HISTORICAL MARKER PROGRAM, WHICH BECAME NATIONALLY RECOGNIZED DURING HIS TERM AS CHAIRMAN. HE RENOVATED HIS GLADEWATER BOYHOOD HOME AND FARM AFTER HIS RETIREMENT. HE IS BURIED IN THE FAMILY CEMETERY SOUTH OF TOWN.

(1992)

DONORS
as of April 22, 1992

Mr. and Mrs. Raymond Allen	Mr. and Mrs. Taylor H. Jobe
Mr. and Mrs. Donald Allen	Mr. and Mrs. Harold Kennedy
Judge and Mrs. Paul Banner	Mr. Harding L. Lawrence
Mrs. Mildred Wood Barker	Mrs. Claud Lee
Mr. and Mrs. W. R. (Billy Bob) Barker	Mrs. H. L. Long
Mrs. Margaret C. Bell	Mrs. Morris Markham
Mrs. Earl Berryhill	Mr. and Mrs. Gordon J. Mayer
Dr. Norman Black	Mr. and Mrs. E. D. McAlister
Mr. and Mrs. David L. Bondurant	Mrs. Kristi and Mr. David McBride
Dr. and Mrs. Martin H. Boone, Jr.	Mr. and Mrs. H. L. McKaig
Mr. and Mrs. Richard Bowman	Ms. Gem Meacham and Mr. John Hillier
Mrs. R. W. Burnett	Mrs. E. R. Molina
Mr. Roger C. Chapman	Judge and Mrs. David Moore
Mrs. W. Grady Coleman	Mrs. R. B. Oder
Mr. and Mrs. John Cotten	Mrs. Elizabeth Moore Osteen
Mr. and Mrs. Billy Bob Crim	Mr. and Mrs. John Patrick
Ms. Sondra Daniel	Mr. and Mrs. Jack L. Phillips
Mrs. Robert S. Daniel	Mr. and Mrs. M. A. Pyeatt
Mr. and Mrs. Jack Earp	Mrs. W. Harold Rose
Mr. and Mrs. Carl B. Everett	John and Jean (Waldron) Shipp
The First State Bank	Mr. and Mrs. Ron J. Shore
Mrs. J. Raymond Flanagan	Mrs. Eloise Barker Sparks
Gladewater Business and Professional Women's Club	Mr. and Mrs. Ralph Spence
Mr. and Mrs. Wilson Godfrey	Mrs. Milton Still
Mr. and Mrs. Gordon Godfrey	Mrs. Lavon Traugher
Mr. and Mrs. Robert Goodwin	Mr. and Mrs. Robert S. Trotti
Mrs. Sarah L. Greene	Mr. and Mrs. Thomas C. Unis
Mrs. A. R. Hancock	Mrs. W. C. Watson
Mr. and Mrs. William H. Harlan, Jr.	Mr. and Mrs. Ralph C. Weiser
Mr. E. Lee Higgins	Mrs. Marjorie J. Wilkins
Mrs. Joe R. Hollaway, Jr.	Mr. C. W. Williams
Dr. and Mrs. G. R. Hugman, Jr.	Mrs. H. W. Williams
Mrs. Warren Hunt, III	Mr. and Mrs. Woodrow Wood
Mr. Fred T. Jeter	Mr. and Mrs. Jackie Wood

ACKNOWLEDGEMENTS

GLADEWATER CHAMBER OF COMMERCE
Dee Colvin, Secretary
Marsha Valdetero, Assistant Secretary
Gordon J. Mayer, Immediate Past President
Brenda Kaster, President
Board of Directors

THE JOHN BEN SHEPPERD ESTATE
Mamie S. Shepperd
Gem Meacham
Mark Mahfood
Ray Mahfood
James Mohon

EAST TEXAS GUSHER DAYS
Gordon J. Mayer, Coordinator
Board of Directors

GREGG COUNTY HISTORICAL COMMISSION

Dr. Norman Black, Chairman	Ms. Sondra Daniel	Dr. W. D. Northcutt, III
Mrs. Mildred Wood Barker	Mrs. Beth Dodson	Mrs. Elizabeth Moore Osteen
Mrs. Sally Gossett Barron	Dr. Ken Durham	Mrs. Amanda Pratt
Mrs. Amelia Belding	Mrs. Helen McHaney Griffin	Mr. Ben Reynolds
Mr. Jack Buchanan	Mrs. Nelda Lewis	Mrs. Nancy Ruff
Mrs. Anne P. Cammack	Mrs. Virginia Long	Mrs. Charlotte Teske
Mrs. Pauline Cox	Mrs. Nauty Byrd Pelphrey Mayer	Mr. Joe White
Mrs. Ann Lacy Crain		

GLADEWATER HERITAGE SOCIETY

Fredalene Clark, Pres.	Executive Board:
Elizabeth Osteen, 1st VP	Mildred Barker
Harold Wells, 2nd VP	Mozelle Berryhill
Nauty Byrd Mayer, Sec.	Howard LeBus
Virginia Baker, Treas.	Marie Molina

JOHN BEN SHEPPERD MARKER DEDICATION

MAY 2, 1992
1:00 P.M.

Start promptly!!

1:00 p.m.	Mistress of ceremonies	Nauty Byrd Mayer
1:01	Invocation	Carl Everett
1:03	Pledge of Allegiances (US and TX)	Shepperd grandchildren
1:05	Welcome to Gladewater	Mayor Jackie Wood
1:10	Introduction of Guests	Nauty Byrd Mayer
1:15	JBS in Gladewater	Woodrow Wood
1:10	Keynote JBS Career Significance of Markers	Tieman H. Dippel, Jr.
1:30	Dedication & Unveiling	Dr. Norman Black, Chairman Gregg Co. Hist. Commission Dr. Carl Komatsu, Chairman Texas Historical Commission Virginia Long, Former Member Texas Historical Commission Mrs. John Ben Shepperd

End promptly!!

SATUTE TO THE TEXAS FLAG (OR) THE PLEDGE OF ALLEGIANCE TO THE TEXAS FLAG:

"Honor the Texas Flag, I pledge allegiance to thee, Texas, one and indivisible."

Norman Black

May 2, 1992

JOHN BEN SHEPPERD MARKER DEDICATION

I want to thank Nauty Byrd Mayer for her effective job as M.C. this afternoon and also express appreciation to her, Elizabeth Osteen, Mildred Barker, and Gem Meacham for their work in arranging for this historical marker to be placed in Gregg County. It has been a pleasure to work with the Gladewater Heritage Society.

Much has been said about John Ben Shepperd and I want to add that Official Texas Historical Markers are usually not awarded to individuals until fifty years after their death. Today's marker attests to the high regard and esteem accorded to John Ben Shepperd throughout the state.

It is extremely appropriate that this marker be dedicated in 1992, which is the thirtieth anniversary year of the statewide marker program which John Ben launched. Whenever you pass a historical marker, be reminded of John Ben. They are his legacy.

The placement of Official Texas Historical Markers is administered by the Texas Historical Commission in Austin. This state agency is responsible for the most active and comprehensive historical preservation and marking program in the United States.

I am pleased to welcome the Chairman of the Texas Historical Commission, Carl Komatsu of Fort Worth. He has a special resolution to present before we unveil the marker. . . . Mr. Komatsu.

Black

Mr. Komatsu and Mrs. Shepperd will you please step to the marker for the unveiling. I would also like to call forward Mrs. Virginia Long of Kilgore who is a former member of the Texas Historical Commission.

The text of the marker is in your program so I will not repeat it. It pays homage to the great deeds of a great man.

(step to the marker and remove the cover. Keep everyone there at the marker while Nauty Byrd concludes.)

TODAY

■ TV Log	2
■ Religion	4
■ Election	6

B

Shepperd makes mark in history

The American

GLADEWATER — Just two years since his death, the man who was instrumental in creating a way to appreciate Texas history will be honored today with his own marker in his East Texas hometown.

The marker for John Ben Shepperd, a resident of Odessa from 1957 until his death in 1990, will be posted for "Gusher Days," an annual celebration of the town's heritage. Shepperd was active in state and Odessa politics.

Texas has commemorated about 10,000 historical sites, dates and famous figures with historical markers. Gem Meacham, who works for Shepperd's estate, said, "They usually don't give markers for anyone unless they've been dead for 50 years. The significance of the marker is that it's being set up so soon after his death."

Shepperd was instrumental in starting the Texas Historical Commission, which is responsible for preserving historical documents, said Bobbie Klepper, an archivist at

the University of Texas of the Permian Basin. Shepperd was the first chairman of the commission's highway marker program.

The hometown marker outlines Shepperd's career in politics. He served as Texas secretary of state and attorney general during the 1950s. He was state and national president of the Jaycees and was honored as an Outstanding Young Man in America in 1949.

He was instrumental in winning legislative approval to establish UT-Permian Basin in 1969. He was chairman of the Texas Arts Commission, and president of the Gladewater, Odessa and West Texas chambers of commerce.

A Heritage of Odessa Foundation marker at UT-Permian Basin also honors Shepperd.

Klepper said Shepperd has made a tremendous impact on Odessa and Texas.

"There isn't an organization in this area or the state that hasn't felt his impact," she said. "I don't know what these organizations would have done without Mr. Shep-

perd."

As attorney general, Shepperd is credited with being a leader in a successful fight against graft, corruption and violence in Duval County. His investigation of voting irregularities and government corruption there led to 300 indictments against county and school officials. He also investigated the Veterans' Land Program, which resulted in a prison sentence for then-Land Commissioner Bascom Giles.

He also was a partner in Shepperd & Rodman, a law firm, and Shepperd & Meacham Public Relations, both in Odessa.

Odessa's famed jackrabbit was Shepperd's idea for promoting the city. John Ben Shepperd Parkway was named in his honor. The statewide John Ben Shepperd Forum on Public Leadership for young leaders throughout the state was established in his honor in 1985.

Shepperd moved to Odessa with his wife, Mamie, and four children in 1957. In 1983, Shepperd retired from El Paso Products, where he was a special assistant and consultant for 26 years.



Odessa American file photo

In this 1979 file photo, John Ben Shepperd receives an award for his service to the Texas Historical Foundation. A historical marker will be placed in his hometown of Gladewater today to honor him.

Historical marker will honor John Ben Shepperd

GLADEWATER — The accomplishments of Gladewater native John Ben Shepperd, former Texas secretary of state and attorney general, will be commemorated 1 p.m. today with an official Texas Historical Marker during Shepperd East Texas Gusher Days.



The grounds of First State Bank downtown, is sponsored by the Gladewater Heritage Society, the Texas Historical Commission and the Gregg County Historical Commission.

Following today's dedication, public tours of the John Ben Shepperd home from 3-5 p.m. will inaugurate the first Gusher Days Heritage Home Tour activity. Tour tickets are \$5. Proceeds go to benefit the society's archival and preservation projects. The home is located on Country Club Road at old Texas

135.

Shepperd, who died in March 1990, served as Texas secretary of state and attorney general during the 1950s. He was state and national president of the Jaycees and was honored as one of 10 "Outstanding Young Men of America" in 1949.

Shepperd, born in Gladewater in 1915, was first chairman of the Texas Historical Commission's highway historical marking program which is celebrating its 30th anniversary in 1992. He was organizing

chairman of the Texas Arts Commission in 1966.

After leaving public office, Shepperd served on numerous boards and commissions by appointment of four U.S. presidents and seven Texas governors. He was noted for his volunteer work for business, education, cultural, historical and tourism organizations.

Shepperd was president of the Gladewater, Odessa and West Texas Chambers of Commerce. He also served as director of the East Texas

Chamber of Commerce.

Numerous awards and recognitions acknowledged Shepperd's contributions to his state. He was named 1984 "Texan of the Year" by the Texas Chambers of Commerce and as 1977 "Texas Outstanding Citizen" by the Texas Exchange Clubs.

Shepperd's ideals of public service and responsible citizenship continue to influence new generations of Texans through the statewide John Ben Shepperd Public Leadership for young leaders under the age of 40.

ET Gusher Days bring back 1930s oil boom

By Van Craddock
Entertainment Editor

GLADEWATER -- This city relives the 1930s' oil boom today with numerous activities, all part of the Seventh Annual East Texas Gusher Days.

A downtown parade, antique auto display, arts and crafts and Schaffer's 20th Century Carnival are only a few of the fun activities Gusher Days visitors will find in Gladewater today.

Friday night the Gusher Days Players unveiled their new three-act comedy, "KHOM in Gusherville," at Gladewater High School auditorium. The play continues 7:30 tonight. Advance reserved tickets are \$5 and advance general admission is \$4. At the door, tickets will \$6 and \$5, respectively.

Here is a look at today's schedule of Gusher Days events:

7 a.m.: Christian Men's Association Pancake breakfast at "Dirty Neck Jessie's" on East Pacific.

8 a.m.: One-mile Fun Run, 200 E. Commerce.

8:30 a.m.: 5K Gusher Gallop, 200 E. Commerce.

10 a.m.: Arts, crafts and food concession open downtown.

11 a.m.: Gusher Days Parade, downtown.

11:30 a.m.: Pioneer Luncheon, First United Methodist Church, 217 W. Quitman.

1 p.m.: John Ben Shepperd Texas Historical Marker dedication.

1 p.m.: Longview Polo Club verses Willow Bend Polo and Hunt Club of Dallas, Gladewater Roundup Rodeo Grounds on U.S. 80 west of city.

1:30 p.m.: "Brownie Bowl Lick-Off" heats, Glory Bee Baking Co.

2 p.m.: Tours of Shepperd home.

4:30 p.m.: "Brownie Bowl Lick-Off" finals.

7:30 p.m.: "Comedy play "KHOM in Gusherville" at Gladewater High School auditorium.

8 p.m.: Downtown street dance, East Pacific.



SHEPPERD MARKER DEDICATED — A state historical marker honoring John Ben Shepperd, a former Texas secretary of state and attorney general, was unveiled Saturday during the second weekend of Gladewater's Gusher Days festival. Pictured from left are Dr. Norman Black, chairman, Gregg County Historical Commission; Virginia Long, former member, Texas Historical Commission; Mrs. John Ben Shepperd; and Karl Komatsu, chairman, Texas Historical Commission. (Staff Photo By Tracy Varnell)

Brenham Blast Victim Finally Leaves Hospital

HOUSTON (AP) — Nearly a month after he was injured in a fiery explosion near Brenham, 3-year-old Travis Medve finally has left a Houston's hospital.

Travis was riding to school in a car with his mother and grandmother near the Seminole Pipeline Co. salt-dome gas storage facility April 7 when the explosion ripped through the family's car, nearly flattening it.

His mother, 27-year-old Delores Medve, and her mother, 46-year-old GLoria Diver, both died at Hermann Hospital.

The explosion also claimed a third victim, 5-year-old Derrick Meinen, and injured 17 other people. One of those victims — Derrick's mother, Jane Meinen — remained at Hermann.

Friday afternoon, Travis' father, Kevin Medve, carried Travis from Hermann. The two plan to stay with Medve's mother in Fresno. He's also promised to buy a puppy for his son.

"He's pulled through real good," said his father as he held the boy.

Travis was flown to Hermann by Life Flight helicopter the day of the blast. He suffered first-, second- and third-degree burns over 30 percent of his body. His legs, arms and part of his face are scarred with purplish spots from the burns.

Travis can walk and play, but still suffers damage in his left hand and arm, said Sandy Gates, program director for Life Flight. Gradually, he will regain full use, she said. Most of the scars probably will disappear, she said.

Texas Historical Marker unveiled in honor of Gladewater native

By George Zarazua
Staff Writer

The man who started it all was honored with one of his own creations Saturday in Gladewater during the East Texas Gusher Days.

An official Texas Historical Marker was unveiled in honor of John Ben Shepperd, a Gladewater native and former Texas secretary of state and attorney general.

Shepperd was the first chairman of the Texas Historical Commission's marker committee, which first started placing historical markers in Texas. The first of such markers was unveiled in Gladewater in 1962.

According to Texas Historical Commission Chairman Karl Komatsu, more than 11,000 historical markers now exist across Texas.

"The Texas Department of Transportation says each of them generates \$7 a day in revenue in terms of tourists," Komatsu said. "They also say the second most reason they (tourists) come to

Texas is the history sights."

The unveiling at First State Bank on Main Street also marked the 30th anniversary of the marker program.

"You are going to see markers throughout Texas and I hope that every time you see one you remember this one," Tieman H. Dippel Jr. said at the dedication of the marker.

The Shepperd historical marker is sponsored by the Gladewater Heritage Society, the Texas Historical Commission and the Gregg County Historical Commission.

Commemorating the accomplishments of Shepperd was one of many events taking place during the East Texas Gusher Days Saturday.

"It is very appropriate to have it on Gusher Days weekend when there are a lot of people in town," Mayor Jackie Wood said.

The seventh annual East Texas Gusher Days, which celebrates the heritage of Gladewater and its oil boom, hosted a number of activi-

ties.

"Elvis is alive and well, let me tell you," Gladewater Chamber of Commerce Secretary Dee Colvin said.

Colvin described the portrayal of Elvis Presley by Kevin Clay in the play 'KHOM in Gusherville', presented by the East Texas Gusher Days Players Friday and Saturday night, as unbelievable.

Other events held were the One-mile Fun Run, tennis tournament, Five-K Gusher Gallop, Gusher Days Parade, antique car show, polo tournament, street dance and the Brownie Bowl Lick-Off.

"They have this bowl and you lick and the person who gets the bowl the cleanest wins," Arts and Crafts Festival Chairman Joyce Hanes said.

Today's events include the tennis tournament finals, Helen Schafer's 20th Century Carnival, arts and crafts and entertainment in Caseys Station.

Tyler - Telegraph
Sunday, May 3, 1992



SHEPPERD MARKER DEDICATED — A state historical marker honoring John Ben Shepperd, a former Texas secretary of state and attorney general, was unveiled Saturday during the second weekend of Gladewater's Gusher Days festival. Pictured from left are Dr. Norman Black, chairman, Gregg County Historical Commission; Virginia Long, former member, Texas Historical Commission; Mrs. John Ben Shepperd; and Karl Komatsu, chairman, Texas Historical Commission.

(Staff Photo By Tracy Varnell)



Gregg County Historical Commission

Norman W. Black, D.D.S.
Chairman

417 Mobberly Avenue
Longview, Texas 75602
May 11, 1992

Phone
903-757-2261

Frances Rickard, Director
Local History Programs
Texas Historical Commission
P. O. Box 12276
Austin, Texas 78711

Dear Frances:

Enclosed is a collection of news clippings about the John Ben Shepherd Historical Marker Dedication. It was a very nice ceremony which was held in conjunction with Gladewater's "Gusher Days" festival. It was all facilitated by the professional help of Ms. Gem Meacham, a long time associate of John Ben's.

As you know, it was a timely event, being in the thirtieth anniversary year of the State Marker Program. It was made even better by the resolution from the Texas Historical Commission personally delivered by Chairman Carl Komatsu. I believe he really enjoyed the visit to East Texas.

Thank you, your staff and Curtis for all your most able assistance in making this occasion a very memorable one.

Sincerely,

A handwritten signature in cursive script, appearing to read "Norman W. Black".

Enc.



Mirror photo/Brenda Bedgood

Special day

May 2 was a very special day for family and friends of the late John Ben Shepperd. Above, his widow Mamie Shepperd and brother Alfred Shepperd, right, take time out to talk with Tieman H. Dippel Jr., featured speaker during the Texas Historical Marker dedication at First State Bank. At right, special guests included Dr. Norman Black of Longview, Gregg County Historical Commission chairman; Virginia Long of Kilgore, former member of the THC and member of the GCHC; Mrs. Shepperd; and Karl Komatsu of Fort Worth, THC chairman. Other special guests of the day included Shepperd's close friend Carl Everett of Dallas, Mayor Jackie Wood and master of ceremonies Nauty Byrd Pelphrey Mayer. Shepperd (Oct. 19, 1915-March 8-1990) served as a state attorney general and secretary of state and is responsible for the THC's marker program, which boasts more than 11,000 markers across the state.

