

PAT E. TAGGART President-Publisher
HARRY PROVENCE Editor-In-Chief

Published by Newspapers, Inc., 900 Franklin, Waco, Texas, 76703

H. M. FENTRESS

Chairman of the Board

Historical Survey Work By Shepperd Is Amazing

In another week, John Ben Shepperd of Odessa will finish six years of service on the Texas State Historical Survey Committee, the last four of those years as chairman of the committee. The record of accomplishments by the committee is most remarkable and a great share of the credit for this fact goes to the tireless Mr. Shepperd.

The story of his work is impressive. Organized activity to preserve and display the evidences of the Lone Star State's past was spotty, to say the least, until the Texas historical preservation laws were passed by the legislature. John Ben Shepperd was chairman of the citizens committee that worked for the passage of these statutes, recognized as being the most effective and comprehensive in the nation.

Sanctioned by law and prodded by John Ben Shepperd, county historical survey committees have been established in all 254 counties whereas only 52 existed before. Counties having fireproof archival storage now number 189, as compared to 73 a few years ago. Historical museums in Texas communities have increased from 84 to 243, with 64 others in the active planning stage.

More than 7,000 historical tours, pilgrimages, commemorative and dedicatory programs have been held in all parts of Texas, attended by a total of 3,500,000 persons, many of them from out of state.

More than 1,000,000 copies of regional and statewide historical directories, guide lists and maps have been published. More than 950 historical structures have been preserved or restored. More than 4,200 historical markers have been placed in Texas communities in the last two and a half years.

All these things and many more besides, are directly attributable to John Ben Shepperd's energetic leadership. Texas' last flurry of action in the field of historic preservation had occurred 30 years ago during the state's centennial observance. It was a dormant, largely ignored subject until Gov. John Connally and John Ben Shepperd decided to do something about it.

Now thousands of Texans are actively interested in preserving for posterity the heritage of the state and the work of John Ben Shepperd will live long after this generation has departed the scene.

Get
ings
67
individual
received
was the
Printed
Wm. Alex
Ben Shep-
the Texas
Com-
of all the
the state
for their
their hus-
the award
that Mrs.
having been
y with the
nty Histo-
nittee, and
with such
numerable
ecordation,
ng, Preser-
(RAMPS)
e history,
use of the
le to at-
etings, is
title for
BENE
with full
any state
ing his
mark
for his
dena. In

AN
hib
gre
nan
son
con
ray
whi
ing
me

EDITORIALS—

Texas History Comes Alive

John Ben Shepperd, Gregg County native and former attorney general of Texas, who now resides in Odessa, recently concluded six years as a member and four years as president of the Texas State Historical Survey Committee. He has earned a rousing cheer of appreciation and a standing vote of thanks from all Texans for having done more than any other man to make Texas history come alive in our generation.

The Gladewater native and Longview attorney who rose to statewide prominence came by his keen interest in history quite naturally. He was born and reared in an East Texas region rich in history and legend. He has given some of the best years of his life to study, research, hard work and leadership in the field of preservation and permanent public marking of historic buildings and sites.

During this period of service, **John Ben** also served as president for three years and as secretary-treasurer for one year of the Texas Historical Foundation, a private affiliate of the State Survey Committee and of the 254 County Historical Survey Committees—one of which is active in Longview and Gregg County and to which he has contributed inspiration and participation during the past year.

In his present home county, Mr. Shepperd recently was cited by resolution of the Ector County Historical Survey Committee for furnishing the leadership during his tenure as president of the Texas State Historical Survey and making outstanding contributions in the field of recognition and preservation of Texas heritage, as follows:

1. Chairman of the committee that prepared and worked for the passage of the Texas Historical Preservation Laws, recognized as being the most effective and comprehensive in the nation;
2. Chairman of the reorganization

committee responsible for the increase of organized county committees from 52 to 254.

3. Originator of the widely acclaimed program of Recordation, Appreciation, Marking, Preservation, and Surveys of Texas History known as "RAMES";

4. Spearheaded the observance of the Civil War Centennial in Texas, a dignified and well-executed program of marking, commemorations and observances, together with the accumulation and compilation of invaluable archival materials which will enable future scholars to more accurately determine and portray Texas' role in this conflict;

5. Instituted a program of official state awards to recognize those who have made authentic restorations and who have done outstanding and significant things in the field of historical preservation.

The **John Ben Shepperd** tenure as president of the Texas State Historical Survey Committee can count many accomplishments and visible results which can be credited to his leadership and devotion, including:

Initiation of the Official Texas Historical Marker Program, the first in Texas since 1936 and now under way all over the state, with more than 4,200 markers having been erected in cooperation with state and local governments, organizations and individuals.

More than 950 historical structures have been saved or restored, and the number of counties having fireproof archival storage has increased from 73 to 189.

Historical pamphlets and maps have been made available to the traveling public by 219 counties; 221 cities now have "Historical Markers in City" medallions on highways to alert the traveler; and the number of historical museums has been increased from 84 to 243, with 64 more in the active planning stage.

An estimated 3,500,000 persons, including many from out of state, have attended or otherwise taken part in more than 7,000 historical tours, pilgrimages, commemorative and dedicatory programs in all parts of the state.

More than a million copies of regional and statewide historical directories, guide lists and maps have been published and made available to the public.

This monumental work, carried out under the inspired leadership of Mr. Shepperd, is a basic contribution to Texas progress that will pay increasing dividends in both immediate and future years. Much greater than many people realize is the economic potential of tourism. It is one of our state's most promising means of boosting the economy.

An awakened and developing appreciation of our history and tradition can be one of the strongest influences for moral and spiritual progress, as well as for economic and material development. For his great contribution in these fields of endeavor, **John Ben Shepperd** has earned not only national recognition but the admiration and appreciation of his neighbors, friends and fellow citizens throughout Texas!

Da
Big S
J

Charles W
new preside
torical Surv
John Ben S
It goes a
he has a
of shoes to
Shepperd. It
it, a postho
vation of T
terials and
Instead c
merely a pe

Gorbachev takes last shot at keeping Lithuania

What price freedom? \$33 billion. That's what Soviet President Gorbachev says Lithuania is worth.



ports and military bases.

By making such an monetary rome terms, Mr. taking at dis-lithuania; inde-at least wn. But ly more revers-s course n when in Janu-d of eco-e from t subsi-if condi-r signal cepting a Soviet

30 A

The account from al Lithuan Mr. Gor Lithuan Algirda: this we lion rut for capit in the 2 billion f duction. exchang said that tled in rubles. T hurting i rency any

The Dallas Morning News

Saturday, March 10, 1990

BURL OSBORNE, P
JEREMY L. HALBREICH, and Gene
RALPH LANGER, Vice Pr
WILLIAM W. EVAN
RENA PEDERSON, Vice Pre
Senior Vic
HARRY M. STANLEY J
J. WILLIAM COX, Adm
Vice Pr
FRANK MCKNI
HAROLD F. GA
BARRY PECKI
GROVER D. LIVINGSTON.

Lithuania doesn't have that kind of money, and certainly not in convertible currency. And it probably wouldn't pay even if it did. Besides, Lithuania has a valid argument that Soviet financial claims are offset by its own, which include Soviet use of its

EDITORIALS

Lithuania's legislature will more than likely move to reclaim its independent status. Even if Moscow insists on money that it cannot pay or attempts to isolate it economically, Lithuania has determined that economic hardship is but a small price to pay to regain control over its own affairs.

CITIZEN SHEPPERD

John Ben Shepperd personified 'service'

Many new and younger Texans do not know the name John Ben Shepperd. Pity. Mr. Shepperd, who died at his home in Gladewater at age 74 on Thursday, defined the word "citizen." Few have given so much so freely to build a better Texas than did Mr. Shepperd.

In 1949, at age 35, he was named secretary of state by then-Gov. Allan Shivers. Three years later he was elected attorney general. He was re-elected in 1954. As attorney general, he was noted for cleaning up the Duval County political machine by obtaining 300 indictments against local political bosses.

Yet it was not his service in public office for which John Ben Shepperd is best remembered. Mr. Shepperd went on to dedicate the rest of his life to institutions and organizations that shaped Texas' quality of life. When he shocked Texans by opting out of a race for governor that most people believed was his for the asking, he asserted he could do more for his state in private life.

Mr. Shepperd went on to chair the Texas Industrial Development Commission, the Texas Commission on the Arts, and the Texas State Library and Archives Commission. He helped develop many forums dedicated to fostering leadership among young Texans. He led the effort to create the University of Texas at Odessa.

Looking back from today's vantage point, many would criticize his opposition to the organization of the National Association for the Advancement of Colored People in Texas. But that was more of a reflection of the times than the man, who worked diligently to make Texas a state of opportunity for all.

Since John Ben Shepperd first appeared on the public stage Texas has evolved from a rural, oil-and-gas state to a high-tech industrial mega-state. John Ben approved of this transformation. Indeed, at the top of the honor roll of the builders of modern Texas is the name John Ben Shepperd.

This is incorrect, I think. Gen. Shepperd was 17: 1950, age 34 - m ← draft for new H.O.T. in H.M. app. files



Gladewater's native son, John Ben Shepperd gratefully addresses gathering.



'John Ben Shepperd Day'

Gladeite honored in Odessa

By PAUL BERRYHILL

ODESSA — It was "John Ben Shepperd Day" here Thursday, Oct. 19 as West Texans, friends and relatives from all over the state and nation paid tribute to a great man.

The occasion was two-fold. One of the main thoroughfares in Odessa was being named in Shepperd's honor as John Ben Shepperd Parkway and dedication ceremonies were held. It was also John Ben's birthday and close friends and relatives gathered to say "Happy Birthday" at the Shepperd home in Odessa.

Representatives from many communities gathered to pay tribute to Shepperd. Representing Gladewater were Mayor Jackie Wood and wife Diane, George Meisenheimer, Jack Phillips, Reggie Hawkins, Hugh Bowden, John Patrick, Ricky Dudley and Paul Berryhill. The group was recognized at the dedication of John Ben Shepperd Parkway.

The Gladewater group was flown

to Odessa courtesy of the Carlile family on their plane piloted by Edwin Johnson.

Some 750 citizens of Odessa and state and local friends gathered at the dedication ceremonies on a spectacular, sunny day. Speakers included John T. Montford, member of the Texas Senate, and former Gov. Preston Smith. Also, Texas House member Gary Watkins and former Texas House member Ace Pickens addressed the crowd.

Mamie Shepperd, wife of John Ben, was also honored. Ector County Judge Jan Fisher presented Mamie with a plaque noting her help and dedication, not only to John Ben, but to the community as well.

Bands played the national anthem. Red, white and blue adorned the festive occasion.

Shepperd, a member of a distinguished pioneer family in Gladewater, has been prominent in public service activities, community affairs, state and area his-

torical activities and state politics. He served as secretary of state, the state's highest appointive office, from February 1949 to May 1952. He was elected attorney general and served from January 1953 to January 1957.

His list of honors and awards from many sources include service as president of the U.S. Jaycees and president of the Texas Jaycees. He has also served as president of the Texas Historical Survey Committee. Shepperd, a former Gladewater Chamber of Commerce president (1948-1949), has also served as president and director of the East Texas, West Texas and Odessa chambers. He was named Texan of the Year in 1984 and Outstanding West Texan in 1987.

He has been named Outstanding Citizen of Gladewater, Outstanding Citizen of Odessa, and Outstanding Citizen of West Texas.



Ex-state Attorney General John Ben Shepperd dies

By Joseph Garcia

Staff Writer of The Dallas Morning News

AUSTIN — John Ben Shepperd, who built a reputation as a corruption-buster as Texas attorney general, died Thursday at his ranch in Glade-water. He was 74 and had fought cancer for several years.

Gov. Bill Clements called Mr. Shepperd "one of the most committed public servants Texas has ever known."

"Even after leaving statewide public



John Ben Shepperd

office more than three decades ago, he continued to offer his considerable talents and energies to his fellow Texans," Mr. Clements said Thursday.

Both the Senate and the House adjourned in Mr. Shepperd's honor on Thursday.

As attorney general from 1953 through 1956, Mr. Shepperd, a Democrat, led major investigations into political patronage and corruption in Duval County and fraud in the state veterans' land program.

The Duval County investigation resulted in hundreds of indictments against county and school officials, including political boss George Parr. The indictments eventually were overturned on the

grounds that a special grand jury that heard the cases was improperly formed. No one indicted ever was convicted.

However, Land Commissioner Bascom Giles became the first elected state official to enter prison as a result of Mr. Shepperd's work. The attorney general successfully prosecuted Mr. Giles on 13 counts of misusing his office to reap personal benefit from the state's \$100 million veterans' land program. Through the program, veterans could buy up to \$7,000 in land with low-interest, 40-year loans.

Mr. Shepperd's work as attorney general also was influenced by the times. He chose not to run for governor in 1953, saying publicly that he wanted to root out

Communist influences in three Texas labor unions through the Texas Industrial Commission.

Near the end of his second term, he won a temporary injunction against the NAACP.

"They have peddled false hopes at bargain prices," Mr. Shepperd said of the NAACP in a Tyler court. "Into many of our humble, self-respecting colored citizens, they have infused hostility and arrogance and have brought upon them the resentment of the community."

From 1950 through May 1952, Mr. Shepperd was Texas secretary of state, ap-

Please see EX-ATTORNEY on Page 20A.

Ex-Attorney General Shepperd dies at 74

Continued from Page 17A.

appointed to the post by Gov. Allan Shivers.

After leaving the attorney general's office, Mr. Shepperd returned to a private law practice and other business interests. He was president of the U.S. Jaycees in 1947, and had been a director of the Jaycees Foundation since 1984.

For the last eight years, Mr. Shepperd was a director of Blue Cross and Blue Shield of Texas.

"John Ben Shepperd leaves a legacy of civic involvement and citizenship that few achieve," said Blue Cross president John D. Melton. "To me, he was not only a strong leader but a good friend."

Mr. Shepperd had a strong interest in history and genealogy, and served on the Texas Historical

Foundation board and the Texas State Library and Archives Commission. He was particularly interested in the preservation of government documents.

"His concern, along with ours, was every two years during the budget process. Of course, his influence helped us a great deal," said library and archives director William Gooch.

Mr. Shepperd was buried Thursday in Glade-water. A memorial service will be at 11 a.m. Saturday at the University of Texas of Permian Basin in Odessa.

He is survived by his wife, Mamie Shepperd; a son, Alfred Shepperd of San Antonio; twin daughters, Suzanne McCarver of Tulsa and Marianne Morse of Roanoke, Va.; and nine grandchildren.

TOWNES HALL NOTES

A MAGAZINE FOR ALUMNI OF THE UNIVERSITY OF TEXAS LAW SCHOOL

Summer
1990

FROM THE DEAN	Mark Yudof reviews the efforts of the Law School to recruit Hispanic and African American students	2
DEVELOPMENT	A number of alumni, both living and deceased, have been honored with endowed scholarships	9
AWARDS	Tom Laws of Fort Worth and DeMetris Sampson of Dallas are recognized by their peers	10
COMMENT	In Judge Woodie Jones' opinion, it takes more than good grades to make a great lawyer	12
PROFILES	Articles appear in this issue on Ballinger Mills, Ray Bonilla and Riva Johnson starting on page	14
COVER	A memorial story on former Attorney General and civic leader extraordinaire, John Ben Shepperd	16
FACULTY	Pat Hazel wins a prestigious award while Jay Westbrook authors a book on bankruptcy	23

ON THE COVER:

The cover for this issue was purchased by TOM RODMAN, '55, of Odessa, who chose to dedicate the issue to his friend and associate, John Ben Shepperd, who died earlier this year. Many thanks to Rodman, to Shepperd's wife, Mamie Strieber Shepperd, and to his former associate, Gem Meacham of Gladewater, for their gracious assistance with the Shepperd article.

J. MARK MCLAUGHLIN	Foundation President
TOM HENSON	Law Alumni Association President
MARK G. YUDOF	Dean of the Law School
JULIUS GETMAN	Associate Dean
M. MICHAEL SHARLOT	Associate Dean
GUY WELLBORN	Associate Dean
DONALD L. MAU	Foundation Executive Director
BEVERLY SCARBOROUGH	Editor
DEE DODSON	Contributing Editor
HELEN TACKETT, UT News and Information	Contributing Editor
JUDY BROWN MAU	Contributing Editor
O-TREE-O CREATIONS	Production

Townes Hall Notes is published as a service of The University of Texas Law School Foundation and The University of Texas School of Law. Comments from readers are welcome. Please send them to Beverly Scarborough, The University of Texas School of Law, 727 East 26th Street, Austin, Texas, 78705. The contents of the magazine do not necessarily represent the view of the Foundation, its officers or trustees, or of the Law School administration.

JOHN BEN SHEPPERD: A LIFETIME OF SERVICE TO TEXAS

We know a great Texan has been lost when the State legislature adjourns to honor the life of one of its finest public servants, and his eulogy becomes part of this nation's history.

Former Texas Attorney General (1953-57) JOHN BEN SHEPPERD, '41, will long be remembered for his remarkable leadership, both as an elected official and more importantly, as a private citizen who gave his unflagging energy to scores of volunteer organizations dedicated to enhancing the lives of others.

"To honor John Ben Shepperd is to honor the perseverance of a lifetime," Congressman J. J. Pickle read into the US Congressional Record on May 2, 1990. "John Ben was a factory of ideas. And while others were talking, he got things done. He symbolized the 'can-do' spirit of Texas."

Born in 1915 in the East Texas town of Gladewater, his strength of character surfaced early on. According to fellow students TOM UNIS, '41, and Jake Pickle, Shepperd was "an elder statesman the day he hit campus" at The University of Texas. Still in school, he married Mamie Strieber, who graduated from UT with a journalism degree in 1938, and "their door was always open to us," says lifelong friend and admirer Unis.

As a young lawyer, John Ben Shepperd was designated one of the Jaycees' "Five

Outstanding Young Men of Texas" and, after two years as the organization's national president (1947-48), was honored by the U.S. Jaycees as one of the country's "Ten Outstanding Young Men" in 1949.

Within a year, Texas Governor Allan Shivers appointed him Secretary of State.

Elected to two terms as Texas Attorney General, the *Dallas Morning News* credited Shepperd with "cleaning up the Duval County political machine by obtaining 300 indictments against local political bosses."

It is not, however, for his political career that John Ben Shepperd's passing on March 8, 1990, is still mourned throughout the state. "He was a true Renaissance man," says former Lieutenant Governor Ben Barnes of Shepperd's involvement in business, education, tourism, beautification, historical preservation, and industrial diversification.

After leaving public office to set up a private law and public relations firm in Odessa, Shepperd became a trusted advisor to Lyndon Johnson and every Texas governor in the past three decades. Relying on his ethics, intelligence, and a rare ability to find the middle ground, they also appointed him to crucial boards and commissions.

In thirty years, he chaired hundreds of volunteer committees and his contribution to board leadership ranged from the Industrial Development Commission and the Texas Arts Alliance to the Historical Commission and the National Wildflower Research Institute.



John Ben Shepperd

With TOM RODMAN, '55, he established Shepperd and Rodman, a thriving corporate legal firm. He served as general counsel to El Paso Products Company for over 20 years and later built a respected public relations consulting firm, Shepperd-Meacham, for banking, oil, and insurance companies. He was such an avid proponent of West Texas industry that he was often dubbed a "one man chamber of commerce."

"John Ben had a remarkable capacity for working with others and bringing out the best ideas in people," says BOB TROTTI, '50, who assisted Shepperd in elected office. "He was a long-range positive thinker, and was busy making expansion plans for his alma mater right up until the end," he says of Shepperd's 23-year participation in the UT Ex-Students Association.

A modest man, who "never tooted his own horn", Shepperd was nonetheless an inspirational orator. "John Ben would

el day and night to talk 50 people into being more involved in their communities," remembers Ben Barnes.

His devotion to historical preservation was legendary. It was his vision that led to the design and placement of the many historical markers traveling families enjoy today along the highways. "He loved history and passionately cared that future generations should understand their roots," says Congressman Pickle.

Perhaps his most enduring legacy will be passed on by young talented Texans. Since the early 1980s he worked diligently to create and promote the John Ben Shepperd Public Leadership Forum, an on-going joint project between The University of Texas of the Permian Basin, the Texas Chamber of Commerce and the Texas Jaycees, to encourage young people to take roles in local public leadership.

Shepperd's wife, Mamie, is a distinguished community leader in her own right. His son and both sons-in-law are graduates of the Law School—ALFRED SHEPPERD, '64, practices in San Antonio; LARRY McCARVER, '70, lives in Tulsa, Oklahoma; and CLINTON MORSE, '70, is a partner in the Roanoke, Virginia firm of Woods, Rogers & Hazlegrove. Marianne Shepperd Morse is a landscape artist, and her twin sister, Suzanne Shepperd McCarver, manages a travel agency. Another son, John Ben Shepperd, Jr., died in 1970. The Shepperds have nine grandchildren.

That John Ben Shepperd had a profound effect on the lives of Texans is evident in every corner of the state. "He will be missed terribly," says Tom Rodman. "There never has been or ever will be a harder worker or a better friend."



Nancy and Tom Rodman

HONORING A FRIEND

There are many ways to honor the deceased, but TOM RODMAN, '55, chose a unique memorial indeed when he bought the cover of *Townes Hall Notes* at the silent auction during Reunion Weekend and asked that the story be dedicated to his late friend and mentor, John Ben Shepperd.

Rodman grew up in Odessa but came to Austin for a few years to attend The University where he received a BBA in 1952 and a law degree in 1955.

The young man first caught Shepperd's attention when he was a law student and Shepperd the Texas Attorney General. It was the beginning of a long and beneficial association, resulting in the formation of several successful companies, the Shepperd & Rodman law firm prominent among them.

Rodman is also president of Rodman Oil & Gas Company, and owns interests in ranches in Telegraph, Texas and Gunnison, Colorado.

He is married to Nancy Ritter Rodman, formerly of Austin. They have three grown sons—Robert Rodman; Thomas Rodman, Jr.; and James Rodman, '86 graduate of the Law School.



The John Ben Shepperd Family: Back (left to right): Clint Morse, Greg Massari, Kathryn Massari, Al Shepperd, Honey Shepperd, John Shepperd, Lara McCarver, Larry McCarver, Mari McCarver. Front: Alfred Shepperd, Clint Morse, Marianne Morse, John Ben Shepperd, Mamie Shepperd, Suzanne McCarver, Clint McCarver. Kneeling: Stephen Forrest Morse.

JOHN BEN SHEPPERD

(1915-1990)

Odessa and Texas civic legend, consummate volunteer leader. Chaired hundreds of committees; appointed by 7 governors and 4 presidents to state and national boards. Named Texas Secretary of State (1950-52) at age 34. Elected twice as Attorney General (1953-57). Joined Noel-Rodman corporate interests in 1957 to launch a 33-year career as Odessa's premier mover and shaker. President of Odessa, West Texas Chambers and Texas, U.S. Jaycees. Organizer of Texas's official historical marking program, Texas Arts Commission. Champion of U.T.P.B.; instrumental in its creation, development. Named Texan of the Year, 1984. Attorney; prominent petroleum, banking, insurance executive.

No. 19

1991

Heritage of Odessa Foundation
Marker erected in Odessa, Texas
on the campus of U. T. Permian Basin
May 29, 1991

GEM MEACHAM
Box 1403
Kilgore, Texas 75662-1403
214-987-2554

Memo to: Jamie Woods
Fax # 214-717-6347

From: Gem Meacham

The following is the suggested copy for the program. It may be a little long so the type-size might need to be small so it doesn't take too much room under the photograph.

Program copy:

John Ben Shepperd's public and civic leadership spanned a fifty-year career. He first entered public office at age 34 when he was appointed secretary of state in 1950. He was elected 41st attorney general of Texas in 1953 and served two terms. He voluntarily retired from elected office at age 41 despite predictions that he could be Texas's next governor. He remained active as a political activist, advisor, and volunteer and made his greatest contributions as a private citizen. He believed that every citizen shared a responsibility to "give back," to reinvest in order to provide opportunities for future generations. The FORUM is a salute to John Ben Shepperd's philosophy and is dedicated to perpetuating his ideal of citizen involvement in public affairs.

I will be in Gladewater this afternoon (214-845-4546) after 1:00 p.m. if you have any questions.

July 1989

BIOGRAPHICAL SKETCH

John Ben Shepperd

Personal Information

Name: John Ben Shepperd

Residence: 3107 Windsor Drive
Odessa, Texas 79762
915-366-1853

and

Route 3, Box 298
Gladewater, Texas 75647
214-845-4546

Office: 11th Floor, Texas Commerce Bank Building
620 N Grant
Odessa, Texas 79761
915-335-8554

Birthdate: October 19, 1915

Marriage: Mamie Strieber
October 6, 1938

Children: Alfred (49)
John (1942-1970)
Marianne & Suzanne (41)

Grandchildren: 9

1. Business Affiliation

Director, Texas Commerce Bank-Odessa	1957 to date
Director, First State Bank-Gladewater	1981 to date
Partner, Shepperd & Rodman, Attorneys at Law	1957 to date
Partner, Shepperd & Meacham, PR Consultants	1983 to date
Director, Executive Committee, Blue Cross & Blue Shield of Texas Insurance Companies	1982 to date 1985 to date

2. Past Business Affiliation

Director, Executive Committee, Gill Savings	1987 to 1989 1987 to 1989
Special Assistant to the President and Consultant El Paso Products and affiliated Cos.	1957 to 1983
Director, National Western Life Ins Co.	1969 to 1981
Director, Chairman of the Board, Republic National Life Ins. Co.	1974 to 1981 1977 to 1981
Director and Vice President, Odessa Natural Gasoline Co	1957 to 1980
Director, General Counsel, Special Counsel, West Texas Gathering Co.	1957 to 1980 1980 to 1983
Director, Trebol Oil Co.	1957 to 1985
Consultant, The Pioneer Corp.	1984

3. Public Service

Director, 1963 to 1986
President, 1963 to 1967
Advisory Director, 1986 to date
Texas Historical Foundation

Member, 1979 to date
Texas State Library & Archives
Commission

Member, 1959 to date
Chairman, 1975
Ector County Historical Commission

Member, 1987 to date
Gregg County Historical Commission

Director, 1982 to date
Heritage of Odessa Foundation

Director, 1987 to date
Gladewater Heritage Society

Member, Executive Council, 1967 to date
President, 1978 to 1979
Univ. of Texas Ex Students Assoc.

Member, Centennial Commission 1983 to date
University of Texas

Director, 1984 to date
President, 1985
U. S Jaycees Foundation

Advisory Director, 1986 to date
Friends of the White Pool House

Member, Board of Visitors 1988 to date
M. D. Anderson Cancer Center
Foundation

4. Past Public Service

Secretary of State of Texas February ¹⁹⁵⁰ ~~1949~~ to
May 1952

Attorney General of Texas January 1, 1953 to
January 1, 1957

President, 1956
National Assoc. of Attorney Generals

President, 1942 to 1943
Texas Jaycees

4. Past Public Service -- cont.

President, United States Jaycees	1947 to 1948
Director, President, Odessa Chamber of Commerce	1957 to 1986 1960 to 1962
Director, President, West Texas Chamber of Commerce	1963 to 1987 1966 to 1967
President, Texas Historical Survey Committee (now Texas Historical Commission)	1963 to 1966
Director, East Texas Chamber of Commerce	1981 to 1986
Trustee, National Wildflower Research Institute	1982 to 1986
Director, President, Permian Historical Society	1959 to 1983 1965 to 1967
Director, Texans for Quality Education	1984 to 1987
Director, Texas Research League	1957 to 1971
Member, Texas Industrial Commission	1962 to 1966
Organizer & First Chairman, Member, Texas Fine Art Commission (now Texas Arts Commission)	1966 to 1967 1975 to 1978
President, Gladewater Chamber of Commerce	1948 to 1949
Trustee, Baylor College of Dentistry	1971 to 1974
Trustee, St. Edwards University	1979 to 1980
Chairman, University of Texas Permian Basin Development Committee	1973 to 1975

4. Past Public Service -- cont.

Chairman Shakespeare Festival,	1973 to 1975
Member Board of Governors,	1975 to 1976
Odessa's Shakespeare Globe Theatre	
Chairman,	1973 to 1975
Member,	1975 to 1976
Odessa's Bicentennial Commission	
Chairman,	1969 to 1978
Presidential Museum	
Chairman,	1973 to 1979
Member Advisory Committee,	1979 to date
Lone Star Historical Drama Assoc.	
Director,	1974 to 1979
Odessa College Foundation	
Member,	1974 to 1978
Texas Tech Univ. Committee of 50	
Director,	1979 to 1980
Texas Independent College Fund	
President,	1961 to 1962
Friends of Ector County Library	
Director,	1980 to 1983
Books for Texans	
Director,	1976 to 1982
Texas Arts Alliance	
Director,	1980 to 1983
Texas Opera Theatre	
Chairman,	1950, 1951 & 1956
State Hi-Y	
Member Board of Managers,	1976 to 1977
Medical Center Hospital	
Member Advisory Committee,	1973 to 1974
Texas College & University Coordinating Board	

4. Past Public Service -- cont.

Director and Campaign Chairman, United Way of Odessa	1976 to 1977
Chairman, Permian Basin Museums Institute	1972 to 1975
President,	1979
Director,	1977 to 1981
Chairman Business & the Arts, Chairman Hotel/motel Fund Administration,	1980 to 1981
Odessa Cultural Council	1978
Member Advisory Council, Institute of Texan Cultures	1977 to 1984

5. Honors and Awards

Selected three times for Jaycee Distinguished Service Award-Gladewater.

Named three times as one of Five Outstanding Young Men in Texas.

Honored by U. S. Jaycees as one of nation's Ten Outstanding Young Men (TOYM), 1949.

A legendary Jaycee, he was awarded the first lifetime membership in the Texas Jaycees; an honorary membership in 153 local Jaycee chapters in 32 states and dubbed "Mr. Jaycee" in perpetuity by the U. S. Jaycees.

Lifetime member of PTA.

Honorary Doctor of Laws Degree from North Texas University; from Chapman College; from Southwestern University.

George Washington Medal Award from Freedom's Foundation in Valley Forge, Pennsylvania.

Outstanding citizen of Gladewater.

Outstanding citizen of Odessa.

Voluntary Leadership Award, Ector County.

State of Texas, Ruth Lester Award for Meritorious Service in Historic Preservation.

Drill Bit Magazine's "Man of the Month."

American Business Club Civic Service Award.

Phi Delta Kappa, Lay Citizens Award for Outstanding Service to Education.

"Best County Chairman" and "Craftsman Award for Restoration" from Texas Historical Commission.

Odessa Award for Cultural Excellence from Odessa Arts and Humanities Council, 1976.

Community Statesman Award in Community Service, Heritage of Odessa Foundation, 1986.

Texas Outstanding Citizen 1977, from Texas Exchange Clubs.

Texan of the Year 1984, presented by Texas Legislative Conference and Texas Chambers of Commerce.

Outstanding West Texan 1987, presented by West Texas Chamber of Commerce.

Annual John Ben Shepperd Public Leadership Forum (for young leaders under 40) founded 1985 in recognition of public service.

6. Books Published

The President's Guide to Clubs and Organizations

Freedom's Advocate

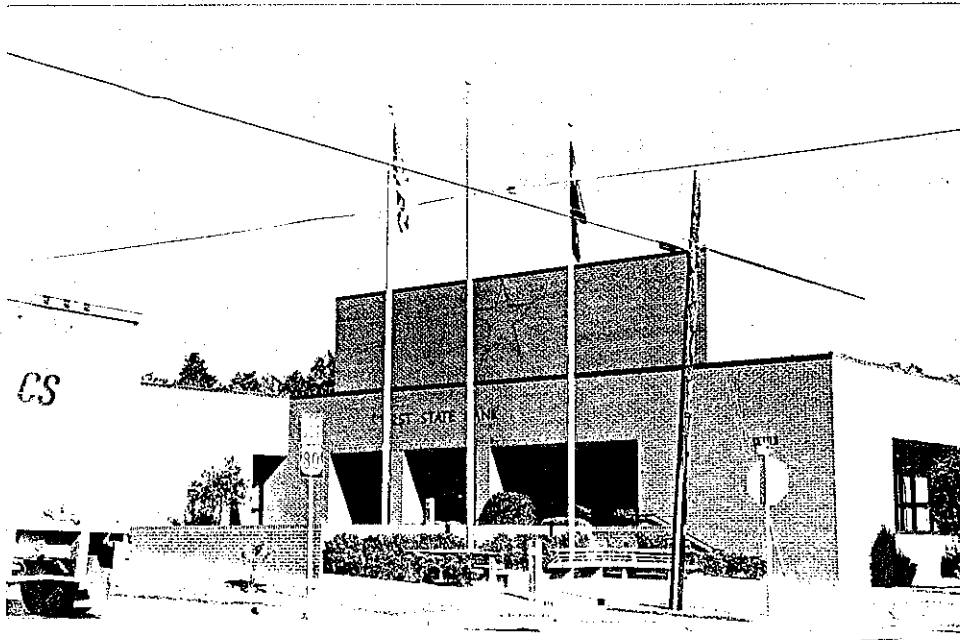
Peace Officer's Handbook

Bureaucrat's Dilemma

Ox Cart State Government

Freedom Is Not Free

Odessa 100



Site of proposed H.M. for John Ben Sheppard
200 N. Main St., Gladewater, Gregg Co., Texas

OCT. 1991

NN

TIONED
POOL
TV
BEDS
PHONES

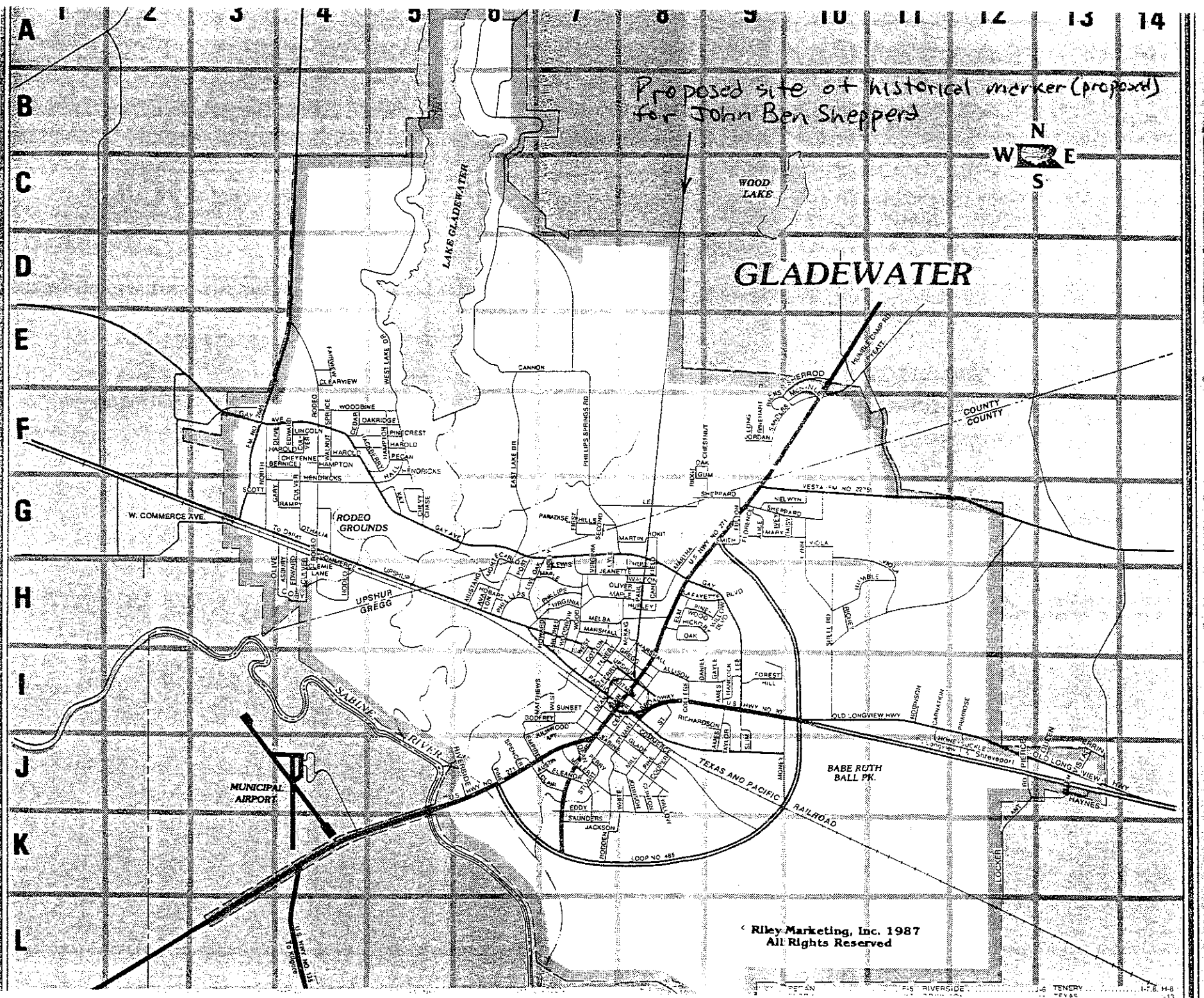
11
NG
DJACENT
TMAN RD.
TEXAS

RTS

BLE
OR
LY
R INC.

1946 -

ection



© Riley Marketing, Inc. 1987
All Rights Reserved



TIONED

POOL

V

BEDS

HONES

11

NG

JACENT

TMAN RD.

TEXAS

RTS

BLE

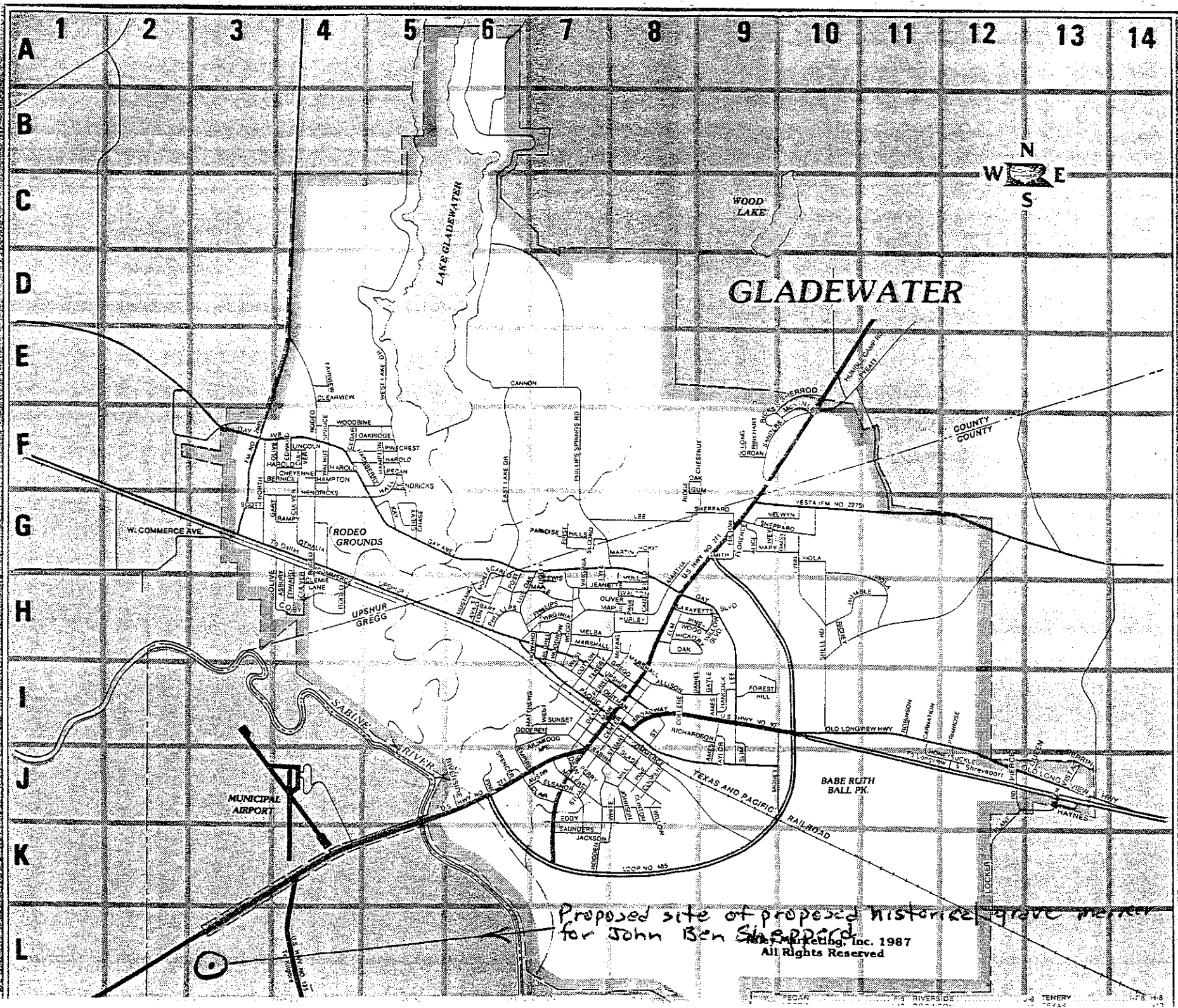
OR

LY

R INC.

1946 -

ation



Proposed site of proposed historical grave marker
 for John Ben Sheppard
 Sheppard Marketing, Inc. 1987
 All Rights Reserved



CURTIS TUNNELL
EXECUTIVE DIRECTOR

TEXAS HISTORICAL COMMISSION

P.O. BOX 12276

AUSTIN, TEXAS 78711

(512)463-6100

November 5, 1991

Dr. Norman Black, Chair
Gregg County Historical Commission
417 Mobberly Avenue
Longview, TX 75602

RE: JOHN BEN SHEPPERD
27" x 42" Subject Marker w/ post

Dear Dr. Black:

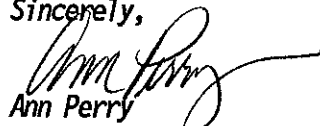
We have received the above-referenced marker application. The application will be reviewed and evaluated by the Texas Historical Commission staff in the order in which it has been received. Currently, there is a 2-3 month wait between the time subject marker applications are received and evaluated. Because applications for Recorded Texas Historic Landmark designations (RTHLs) require an architectural review in addition to an historical evaluation, RTHL applications may take slightly longer. Should additional information be needed for the review, we will contact you and any parties listed below at that time. After any deficiencies have been corrected, we will send copies of the application to the members of the State Marker Review Board, who will make the final determination of the topic's acceptability for marking.

We will notify all parties as soon as the marker committee makes its decision. If the topic is approved for marking, payment will be requested at that time. If not approved, the application will be returned along with a letter of explanation.

Because of the variables involved in the marker process, and because we must coordinate our orders with the schedule of the contracting foundry, we suggest that the date of the marker dedication not be set until the completed marker is received.

We appreciate the effort made to record this topic. Should there be any questions about the status of this marker application, please contact me at the letterhead address and phone number above.

Sincerely,


Ann Perry
Local History Programs

pc: Gladewater Historical Society

P.S. We must have a narrative that includes footnotes and a bibliography. There should have been an earlier version of the Handbook of Texas article that had footnotes. Please submit that as soon as possible. Thank you.

The State Agency for Historic Preservation

GEM MEACHAM

PUBLIC RELATIONS CONSULTANT

Box 1403
Kilgore, Texas 75663-1403
903-983-2554

November 13, 1991

Mr. George Christian
400 W. 15th, Suite 420
Austin, Texas 78701

Dear George:

I have been working with the Gregg County Historical Commission Chairman, Dr. Norman Black, on the marker for John Ben. The application was submitted in October along with documentation and I was waiting for a reply before contacting you. It came in today's mail. Copies of Dr. Black's letter and the Commission's response are enclosed.

We would appreciate your help in moving this along. We have six months before the proposed dedication date in May, but of course if it is impossible to speed the process, then we understand.

Also, I submitted the draft of the Handbook article which you had sent me last year and Ann Perry has written in her P.S. that we need footnotes and a bibliography. Do you or the Handbook editors have this? If not, let me know and I will come up with newspaper clippings and "interviews" to document it.

Did you see this long article on Pinkie? Someone told me it was published in several parts in the Dallas Times Herald. I saw B. L. Parker at the Forum retreat this weekend and he said he had not seen it so while making copies I duplicated one for you.

John Shepperd told his grandmother that he really likes his research job for the Education Committee. Thank you for your part in getting him placed. We appreciate it.

And thanks for your help on this marker project. Please let me know what I need to do about the documentation because I would like to keep this moving along.

Gratefully,



Gem Meacham



Gregg County Historical Commission

Norman W. Black, D.D.S.
Chairman

417 Mobberly Avenue
Longview, Texas 75602

November 16, 1991

Phone
903-757-2261

Ann Perry
Local History Programs
Texas Historical Commission
P. O. Box 12276
Austin, Texas 78711

RE: John Ben Sheppard
27" X 42" Subject Marker w/ post

Dear Ann:

Enclosed is a new copy of the narrative with references and bibliography (which should have been included in the first place). In the re-typing of the paper I did not alter the content, form, grammar, spelling or punctuation. I only researched it and superimposed the footnotes.

Sincerely,

Norman W. Black, D.D.S.

Enc.

John Ben Shepperd, 41st attorney general of Texas (1953-57)¹ and a leading political and civic activist for four decades, was born in Gladewater Oct. 19, 1915, the son of Alfred Fulton and Berthal (Phillips) Shepperd, and died there March 8, 1990.^{2,3} Although he voluntarily ended a promising career as an elected official at age 41,⁴ he remained much in demand as a political advisor to his close friend, Pres. Lyndon B. Johnson, and to many other officials. He was active in law, insurance, petrochemicals, banking, and public relations in Odessa as well as Gladewater, and served on numerous national and state boards and commissions by presidential or gubernatorial appointment.²

Shepperd graduated from the University of Texas with a B.A. in 1938 and LLB in 1941. His law practice in Longview was interrupted by two years (April 1944-46) in the Army in World War II. A partner in the law firm of Kenley, Sharp and Shepperd, he emerged on the public scene after the war as a state and national president of the Jaycees.² He held his first political office as Gregg County Commissioner Precinct 2, when appointed in 1946 to finish his father's unexpired term.

He was named three times as one of the outstanding young men in Texas² and as one of the nation's ten outstanding young men of 1949⁵ in a group that included future Pres. Gerald R. Ford and future Sen. Charles Percy. A strong ally of Gov. Allan Shivers, Shepperd was appointed to a brief term on the State Board of Education, organized the Texas Economy Commission, and was made chair of an election laws reform committee. On Feb. 19, 1950 he was appointed Texas secretary of state at age 34.^{2,5}

Quickly becoming a leader in the dominant conservative wing of the

Democratic Party, Shepperd easily won the attorney general's office in 1952 and was re-elected in 1954. This was a period of school intergration conflicts, labor unrest, disputes over state and federal rights, and sharp differences between state and national Democratic Party leaders. Shepperd moved aggressively against bossism and corruption in Duval County, a fight he began as secretary of state when he threw out the election of a district judge. His investigations led to 300 indictments against school and county officials, including the "Duke of Duval", George Parr.^{4,6} Shepperd also exposed a major cigarette tax swindle and defended Texas against other states challenging the constitutionality of the 1953 congressional act returning the tidelands to state ownership. In 1956 he was chosen president of the National Association of Attorneys General.²

In late 1954, shortly after Shepperd's re-election, Texas was rocked by scandal in its veterans land program administered by the commissioner of the General Land Office, Bascom Giles. Shivers and Shepperd both served on the Veterans Land Board under Giles's chairmanship. Neither were implicated in the abuse program by land speculators, and the investigations by Shepperd, together with legislative committees and grand juries, led to reform of the program. Giles was indicted, convicted and served a prison term for his role in the land schemes.⁴

Yet another government scandal erupted, involving state regulation of insurance companies accused of fraudulent activities. Again, investigations by the attorney general, grand juries and legislative committees led to indictments and to reform of the state's insurance department. But the veterans land and insurance scandals rocked established politics in

Texas and provided fodder for enemies of the Shivers administration. Shepperd was thought by many to be the logical heir to the governor's office, but on April 6, 1956, he ruled out not only a race for governor but also the almost certain prospect of a third term as attorney general.

When his term ended Jan. 1, 1957, Shepperd moved to Odessa to become general counsel to the Odessa Natural Gasoline Company and to form Shepperd and Rodman, a corporate legal firm.^{2,7} It was in historical preservation, education and economic development that Shepperd made his mark in later years. As chairman of the Texas Historical Survey Committee he created the official highway historical markers program.⁸ He was organizing chairman of the Texas Arts Commission and was appointed to three terms, beginning in 1979, on the Texas State Library and Archives Commission.^{2,6} He led the campaign in the late 1960s to establish the University of Texas of the Permian Basin³ and in 1989 a major Odessa thoroughfare near the campus was named in his honor.⁹ For over 30 years he chaired dozens of community and statewide volunteer groups² and worked tirelessly to bring industry to the Permian Basin. In 1984 he was named Texan of the Year by the Texas Chambers of Commerce and in 1987 was selected Outstanding West Texan by the West Texas Chamber of Commerce.² One of his last major projects was the John Ben Shepperd Public Leadership Forum, based at the University of Texas of the Permian Basin and aimed at encouraging young people to become public leaders.⁵

Shepperd married Mamie Strieber of Yorktown on October 6, 1938. They had two sons, Alfred and John Ben, Jr. (d.1970) and twin daughters, Mari-
anne and Suzanne.

REFERENCES

- 1 Texas Almanac 1992-93, A. H. Belo Corp., p. 508.
- 2 John Ben Shepperd, "Biographical Sketch", 1989.
- 3 Longview News-Journal, Longview, Tex., editorial, Mar. 9, 1990.
- 4 Dallas Morning News, "Ex-Attorney-General John Ben Shepperd dies", Joseph Garcia, Mar. 9, 1990.
- 5 "John Ben Shepperd: A Lifetime of Service to Texas", Towne Hall Notes, Summer 1990, pp. 16, 17.
- 6 Dallas Morning News, editorial, Mar. 10, 1990.
- 7 "John Ben Shepperd", Heritage Of Odessa, Odessa, Tex., historical marker, May 29, 1991.
- 8 Longview News-Journal, editorial, Jan. 16, 1967.
- 9 Gladewater Mirror, Gladewater, Tex., editorial, Oct. 25, 1989.

SELECTED BIBLIOGRAPHY

Dallas Morning News, "Ex-Attorney-General John Ben Shepperd Dies", Joseph Garcia, Mar. 9, 1990. Editorial, Mar. 10, 1990.

Gladewater Mirror, Gladewater, Tex., editorial, Oct. 25, 1989.

Heritage of Odessa, Odessa, Tex., "John Ben Shepperd", historical marker, May 29, 1991.

John Ben Shepperd, "Biographical Sketch", July, 1989. Copy on file Gregg County Hist. Comm.

Longview News-Journal, Longview, Tex., editorials, Jan. 16, 1967, Mar. 9, 1990.

Texas Almanac 1992-93, A. H. Belo Corp., Dallas, Tex., p. 508.

Towne Hall Notes, Univ. of Texas School of Law, Austin, Tex., Summer, 1990, pp. 16,17.

4-A

Monday, March 12, 1990

Longview News - Journal

Retta Baker Kelley
Publisher

Jeffrey C. Bruce
Editor

Keith A. Taylor, *Managing Editor*
Mike Hvezdos, *Editorial Page Editor*

Steve Staloch, *General Manager*

Bob Billings, *Controller*

Rob Minervini, *Advertising Director*

Mike Elswick, *Circulation Director*

Kit Yearty, *Production Director*

John Ben Shepperd

Longtime state leader will be missed

The death of former Texas Attorney General John Ben Shepperd last week marked the end of a productive life for an East Texan whose accomplishments will not soon be forgotten.

Shepperd, a Gladewater native and longtime popular figure in Texas politics, died Thursday of cancer at the age of 74.

The state Senate and House appropriately adjourned in his memory Thursday, while state leaders hailed his life.

He was praised by Gov. Bill Clements as "one of the most committed public servants Texas has ever known."

House Speaker Gib Lewis called Shepperd, "a real driving force" on the Texas political scene.

His contribution to higher education in the state will live on for years to come, as he was instrumental in the establishment of The University of Texas of the Permian Basin in Odessa.

Unlike many politicians, Shepperd had the good sense to get out of politics before he gave Texans the impression that he was running simply to perpetuate himself in office.

John Ben Shepperd was a rare individual. He will be missed.



PineWay Farms

Historic Farm Buildings at PineWay Farms
Highway 271, Gladewater
restored by Mr. and Mrs. John Ben Shepperd

PINEWAY FARMS

Farm acreage assembled by A. F. (Doc) Shepperd, father of John Ben Shepperd. Working farm raised cattle, hogs, and forage crops. Area farmers brought animals to dipping trough located behind the Pink House for treatment of parasites and infectious diseases.

Farm buildings restored by John Ben and Mamie Shepperd beginning in 1983.

Gladewater airport, named for Doc Shepperd, sits on land which was once part of farm. Sabine River bend site of political and family picnics. River acreage reforested with pine trees in 1981 by Mamie Shepperd.

PAGODA CLUB

Notorious oilboom honky-tonk was built in 1935 at old Kilgore-Tyler Highway Intersection and moved to the farm in 1946 by Doc Shepperd for use as a barn.

Original interior: hardwood dance floor; silver-spotted walls with patrons' names. Site of "dime-a-dance" entertainment, nickelodeon was used when live band not performing.

DOC SHEPPERD BARN

Built 1913 near airport entrance and moved in 1942. Original handhewn lumber. Used for storage of corn, maize, and hay which was grown on the farm. Double doors at both ends allowed wagons into a central runway. Multiple cribs and lofts opened into the runway and side shelters. Shelters housed farm mules and horses on one side, milk cows on the other.

Barns were the traditional center of farm activities. They protected animals, crops, implements. Hay lofts were favorite playgrounds for children.

LIGHTENING RODS AND WEATHER VANES

Lightening rods protected barn from fire caused by dangerous electrical storms. Iron rods mounted at each end of peaked roof attracted lightening. Attached wire safely conducted electricity to ground. Decorative glass spheres indicated a hit, if broken.

Rooster decoration traditional to weather vanes. Rotated to tell wind direction. Essential to farmers' weather predictions.

OLD PHILLIPS PRIVY

Unique 3 hole outhouse built 1883 at West Mountain family home of Ben Phillips, father of Berthal Phillips Shepperd. Communal aspect uncommon; 1 space each for mom & pop; smaller, lower seat for child. Arbor of wisteria & gourd vines, shielded entrance for modest ladies.

Outdoor toilets prevalent prior to indoor plumbing. Disinfected with lime, fresh earth for sanitation. At night & in bad weather, bedrooms equipped with ceramic slop jars.

BLACKSMITH SHOP

Built in the 1920s by Doc Shepperd. Employed smithy used forge, anvil, mallets to work metal. Shod hundreds of horses and mules, repaired farm machinery, sharpened plows for area farmers. Gathering place for men who gossiped on politics, weather, crops and town. Boys waited in line to paddle the forge.

Shop was moved to the farm during 1930s. Original timber preserved. Used as hide-away office for Doc Shepperd, Gregg County Commissioner.

ORATORY STONE

Originally part of a wall adjacent to
in-town location of The Pink House

Practice platform for John Ben Shepperd's boyhood "speech-a-fying." Native Gladeite served as Texas' Secretary of State and Attorney General. During fifty year public service career has given thousands of speeches with over a million reprints distributed by organizations and publications. Named Outstanding Young Man of America 1949. Served as president of U. S., Texas, and Gladewater Jaycees. 1984 Texan of the Year, he has been appointed to national and state commissions by four presidents and six governors. His volunteer service has included chairing over 2,000 civic, political, and cultural committees.

SHEPPERD HERITAGE HOUSE (THE PINK HOUSE)

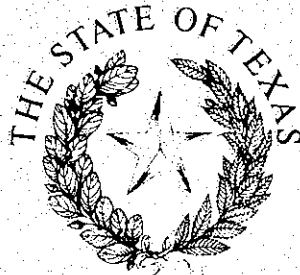
Landmark 1917 residence built in downtown gladewater by a. F. "Doc" (1885-1957) and berthal phillips (1886-1975) shepperd, descendants of prominent early settlers. He was respected merchant, public official, civic work. she was church leader, club woman, noted volunteer.

late victorian style, clapboard structure has original hardwood floor, brass hardware, beveled double-mirrored door, chandelier, 37 wood sash weight-pulley windows.

hosted social, cultural activities; took-in boarders; converted to rooming house during oil boom. moved to family farm, 1983.

Restored by Shepperd sons:

Alfred E.
John Ben and wife, mamie



CURTIS TUNNELL
EXECUTIVE DIRECTOR

TEXAS HISTORICAL COMMISSION

P.O. BOX 12276

AUSTIN, TEXAS 78711

(512)463-6100

February 10, 1992

Gem Meacham
Gladewater Historical Society
Route 3, Box 298
Gladewater, Texas 75647

Dear Gem:

It is an honor for me to announce that the State Marker Review Board has reviewed and approved an Official Texas Historical Marker for John Ben Shepperd for placement in front of the First State Bank Building in Gladewater. A marker for John Ben Shepperd's grave site also was approved.

Payment for the marker is due at this time and should be forwarded immediately so that we may keep on track for a May dedication. The 27" x 42" subject marker with post is \$750.00, so a check in that amount, made payable to the Texas Historical Commission, should be mailed to the letterhead address.

Once payment is received, our staff will prepare the inscription, and a copy will be sent to you and any other parties listed below for review. The inscription will not be written until after payment is received.

The Texas Historical Commission expresses its appreciation to the Gladewater Historical Society for seeking to commemorate the contributions of John Ben Shepperd, especially during this the 30th anniversary of the Texas historical marker program.

Sincerely,

A handwritten signature in cursive script that reads "Frances Rickard".

Frances Rickard, Director
Local History Programs

pc: Dr. Norman Black, Gregg CHC ✓

THE JOHN BEN SHEPPERD ESTATE

Route 3, Box 298
Gladewater, Texas 75647-9223
903-845-4546

February 12, 1992

Ms. Frances Rickard, Director
Local History Programs
Texas Historical Commission
P. O. Box 12276
Austin, Texas 78711

Dear Ms. Rickard:

Thank you for your letters informing us of the approval of both the grave marker and the official Texas Historical Marker honoring Mr. Shepperd. We are grateful to the Commission for working with us on this project commemorating his many contributions.

Enclosed are two checks: \$225 from Mrs. Shepperd for the grave marker; \$750 from the Gladewater Heritage Society for the official marker to be placed downtown.

We look forward to receiving a copy of the inscription to review.

Sincerely,



Ms. Gem Meacham

cc: Dr. Norman Black
Mrs. John Ben Shepperd
Gladewater Heritage Society Board

27" x 42" Official Texas Historical Marker with post
Gregg County (Job #06392)
Location: 200 N. Main St., Gladewater

JOHN BEN SHEPPERD*
(OCTOBER 19,1915-MARCH 8,1990)***

A NATIVE OF GLADEWATER,JOHN BEN SHEPPERD BEGAN A
LAW PRACTICE IN LONGVIEW SOON AFTER HIS GRADUATION
FROM THE UNIVERSITY OF TEXAS LAW SCHOOL IN 1941.
AFTER SERVICE IN WORLD WAR II,HE GAINED PROMINENCE
AS NATIONAL PRESIDENT OF THE JAYCEES.HIS PUBLIC SERVICE
CAREER BEGAN IN 1946,WHEN HE WAS APPOINTED TO FILL
HIS FATHER'S UNEXPIRED TERM AS COUNTY COMMISSIONER.

GOVERNOR ALLAN SHIVERS APPOINTED SHEPPERD SECRETARY
OF STATE IN 1950.HE WAS ELECTED ATTORNEY GENERAL IN
1952 AND WAS REELECTED IN 1954.AS ATTORNEY GENERAL,
HE ATTACKED POLITICAL CORRUPTION IN DUVAL COUNTY AND
THE MISUSE OF STATE VETERANS LAND FUNDS.

AFTER RETIRING FROM PUBLIC OFFICE IN 1957,SHEPPERD
MOVED TO ODESSA WHERE HE PRACTICED LAW AND SUP-
PORTED NUMEROUS CIVIC AND CHARITABLE ENDEAVORS.HE
WAS APPOINTED TO A NUMBER OF STATE AND NATIONAL
BOARDS AND COMMISSIONS,INCLUDING THE TEXAS STATE
HISTORICAL SURVEY COMMITTEE(NOW TEXAS HISTORICAL
COMMISSION).HE WAS THE DRIVING FORCE IN THE GROWTH
AND DEVELOPMENT OF THE HISTORICAL MARKER PROGRAM,
WHICH BECAME NATIONALLY RECOGNIZED DURING HIS TERM
AS CHAIRMAN.HE RENOVATED HIS GLADEWATER BOYHOOD
HOME AND FARM AFTER HIS RETIREMENT.HE IS BURIED
IN THE FAMILY CEMETERY SOUTH OF TOWN.**

(1992)***

*3/4 inch lettering
**1/2 inch lettering
***1/4 inch lettering

GLADEWATER HERITAGE SOCIETY

405 Phillips Drive ° Gladewater ° Texas ° 75647-4831

OFFICERS

President
Fredalene Clark

First Vice President
Elizabeth Osteen

Second Vice-President
Harold Wells

Secretary
Nauty Byrd Mayer

Treasurer
Virginia Baker

EXECUTIVE BOARD

Mildred Barker

Mozelle Berryhill

Howard LeBus

Marie Molina

Contact: Gem Meacham (983-2554)
Mildred Barker (845-2386)
Norman Black (757-2261)

(FOR IMMEDIATE RELEASE) March 4, 1992

Gladewater will commemorate the accomplishments of native son John Ben Shepperd with an official Texas Historical Marker, Saturday, May 2, 1992, 1:00 p.m. as part of Gusher Days activities.

The marker will be unveiled in downtown Gladewater on the grounds of the First State Bank. It is sponsored by the Gladewater the Texas Historical Commission Heritage Society, and the Gregg County Historical Commission.

Following the dedication, public tours from 3-5 p.m. of the John Ben Shepperd home will inaugurate the first Gusher Days Heritage Home Tour activity. Tickets for the tour are available at the Gladewater Chamber of Commerce at \$5.00 per person. Proceeds will benefit the Gladewater Heritage Society's archival and preservation projects.

The late John Ben Shepperd served as Texas Secretary of State and Attorney General during the 1950s. He was state and national president of the Jaycees and was honored as an Outstanding Young Man of America in 1949.

Shepperd was first chairman of the Texas Historical Commission's highway historical marking program which is celebrating its thirtieth anniversary this year. He was organizing chairman of the Texas Arts Commission in 1966.

After leaving public office, Shepperd served on numerous boards and commissions by appointment of four U. S. Presidents and seven



TEXAS HISTORICAL COMMISSION

P.O. BOX 12276

AUSTIN, TEXAS 78711

(512)463-6100

March 10, 1992

Dr. Norman Black, Chair
Gregg County Historical Commission
417 Mobberly Avenue
Longview, TX 75602

RE: JOHN BEN SHEPPERD
27" x 42" Subject Marker w/ post
Proposed inscription

Dear Dr. Black:

Enclosed is the proposed inscription for the above-referenced marker. (Please note that this is a working copy, including filing and foundry instructions. The right-hand margin, which is uneven in this copy, will be justified on the finished marker.)

Please review and verify the information contained in the inscription. In particular, be sure to check all names and dates, and make certain we have noted the correct marker location. Please contact other sponsors of this application to discuss the wording of this marker. If you approve of the inscription, sign and return your own card. You may retain this inscription for your files.

If you have corrections to make or changes to suggest, please make a copy of the inscription and return it to me with the marked corrections. Please do not type a new version of the inscription; we have style and spacing requirements to consider, and require documentation of any changes (particularly of names and dates) in this draft for our permanent file.

The marker will not be ordered for casting until the county historical commission and other persons or groups listed below have approved the inscription. Again, in order to avoid any unnecessary delays, I encourage you to consult with all parties to determine that all are in accord before returning your card or submitting any suggested changes.

A form for ordering paperweights and other marker-related items is enclosed for your information and convenience. Any order you may wish to place from this form may be made at this time or at any time in the future.

Sincerely,

Cynthia J. Beeman
Local History Programs

pc: Gladewater Historical Society

P.S. In order to keep on track for an early May dedication, approval of a final inscription must be received from all parties no later than March 20th. Thank you.

The State Agency for Historic Preservation



*John Ben
Shepperd*

DEDICATION

The University of Texas System and
The University of Texas of the Permian Basin
Invite you to join in commemorating

A Lifetime of Service

Dedicating The Permanent Public Repository
for Papers and Memorabilia of

THE HONORABLE JOHN BEN SHEPPERD
(1915 - 1990)

Texas Attorney General and Secretary of State
and Unveiling

The John Ben Shepperd Historical Marker
Sponsored by The Heritage of Odessa Foundation

Keynote Speaker

ATTORNEY GENERAL DAN MORALES

Wednesday, 2 p.m., May 29, 1991

Student Lounge

The University of Texas of the Permian Basin